



The Elegant B&W Look

BEFORE



AFTER



INGREDIENTS

- Set Tone & Color
- Add Skin Retouching using Portrait • Boost Eye Whiteness & Detail
- Mix in Black & White to Finish

INSTRUCTIONS

Step 1. Launch ON1 Photo RAW 2019 and browse to where the practice files you downloaded are stored. Select practice file P1044959.jpg and then choose the Edit module icon.

Step 2. Inside the Develop tab, set Tone & Color. Decrease exposure to -0.2 to remove any blown out areas.

Step 3. Increase contrast to 10 to add in some detail.

Step 4. Increase mid-tones to 13 to brighten up the photo a tad.

Step 5. Increase the shadows to 12 to reveal dark tones.

Step 6. Pull back on the blacks slider to -9 to add some contrast.

Step 7. Increase the temperature slider to 8 to bring in some warm colors.

Step 8. Go into the Portrait tab. It will automatically detect her face for you and add a filter. Once it adds a filter go into the Portrait filter controls and turn on the Skin retouching.

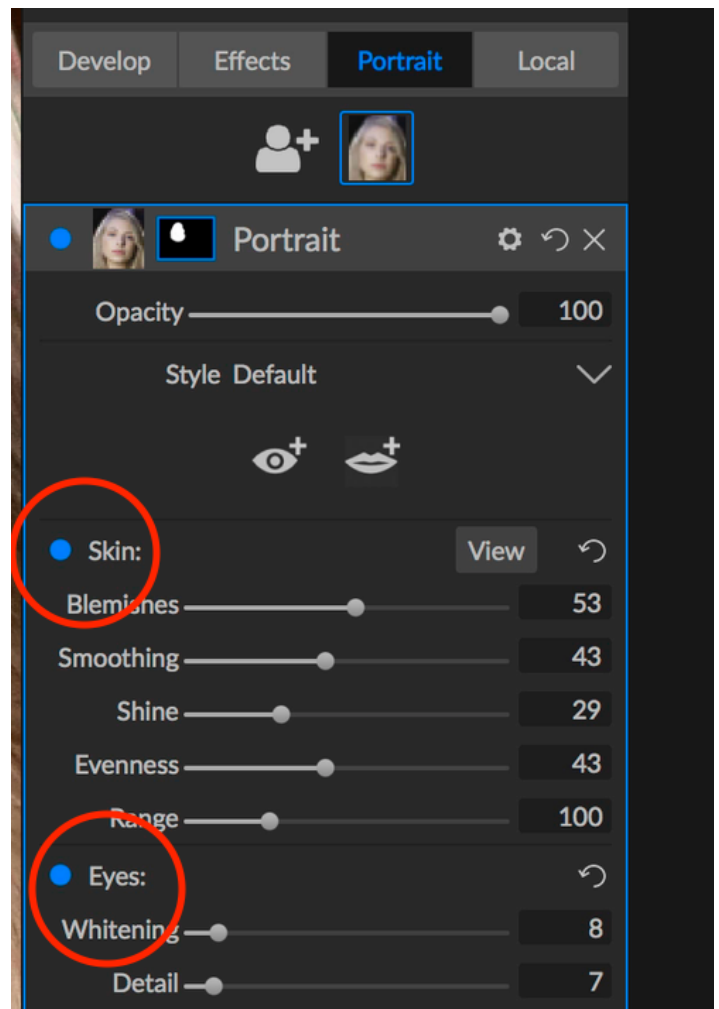
Step 9. Modify the Skin controls.
Increase blemishes to 53 to remove any blemishes from her face.

Step 10. Increase the smoothing to 43 to smooth out the skin.

Step 11. Increase the shine to 29 to remove any unwanted shine on her face.

Step 12. Increase evenness to 43 to even the retouching and face tones out.

Step 13. Select the Eyes option to turn on Eye retouching.



Step 14. When prompted, click in the center of each eye to add the eye mask overlays. Modify the parameters of them to fit her eyes by clicking and dragging on the handles.

Step 15. Once you've got the eye overlays the way you want them head back into the Eyes controls and adjust. Decrease whitening to 8 to give her eyes a more realistic white.

Step 16. Decrease the detail slider to 7 to add in natural detail.

Step 17. Go into the Effects tab. Choose Add Filter and select a Black and White filter.

Step 18. Choose the Red preset style inside the filter controls.

Step 19. Inside the filter controls, click on Tone to expand the tonality controls. Pull back on the brightness slider to -30 to darken the image a little.

Step 20. Move the filter slider to the left to 27 to brighten the model's face.