

# ON1 Resize 2020

From A to Z



The Official ON1 Resize 2020 User Guidebook

# Contents

<b>Part 1: ON1 Resize 2020 Overview</b>	<b>1</b>
Using the Help System	2
System Requirements	2
Installation	2
MacOS	2
Windows	3
Upgrading from Previous Versions	3
Launching ON1 Resize 2020	3
MacOS	3
Windows 7	3
Windows 8.1 and Windows 10	4
Licensing and Registration	4
If you have purchased ON1 Resize 2020:	4
Trial version	5
Product Improvement Program	5
Uninstalling ON1 Resize 2020	5
MacOS	5
Windows	5
Working with Files	6
ON1 Resize 2020 Modules	6
The Module Selector	6
Using Resize 2020 as a Plug-in	7
Using Resize with Adobe® Photoshop®	7
Using Resize with Photoshop® Elements	7
Using Resize with Lightroom® Classic	7
Using 'Plug-In Extras'	8
Using 'Edit In'	8
Extras	9
Organizing Presets	9
How to Delete Extras	10
<b>Part 2: Organizing with Browse</b>	<b>11</b>
ON1 Browse Main Screen Overview	12
Workflow Basics in Browse	13
Getting Started	13
My Catalogs and Browse Panels	14
Navigating Sources	15
Cataloged Folders	15

Adding photos to existing cataloged folders .....	16
Local Drives .....	16
Cloud Storage Services .....	16
Using Shortcuts .....	17
Managing Files and Folders in Browse.....	17
Deleting a folder .....	17
Renaming a file or folder.....	17
Creating a New Folder .....	18
Copying and Moving files and folders.....	18
Show in Finder/Show in Explorer .....	18
Changing a Folder's Thumbnail Preview.....	18
Albums Pane.....	19
Creating an Album .....	19
Adding Photos to an Existing Album .....	19
Removing Photos from an Album.....	19
Delete an Album .....	19
Changing the Album Thumbnail Preview .....	19
Nesting Albums .....	20
Dates Pane .....	21
Advanced Search Pane.....	21
Using the Advanced Search pane .....	21
Using advanced search options.....	22
Saving and modifying search results .....	23
Recent .....	23
<b>Working in the Preview Area.....</b>	<b>24</b>
Fast Preview mode.....	24
Persistent Thumbnail Cache .....	24
Focus and Clipping views.....	25
Clipping.....	25
Focus Mask.....	25
Grid View .....	26
Sorting photos in Grid view .....	26
Detail View .....	27
Filmstrip View .....	28
Compare view.....	28
Map View .....	30
<b>The Photo Panel .....</b>	<b>31</b>
The Navigator Pane (Detail and Filmstrip views only).....	31
The Levels Pane (Detail and Filmstrip views only).....	32
Info Pane (all views).....	32
GPS Metadata .....	33
Metadata Pane .....	33
Metadata templates.....	33
Embedding Metadata.....	34
Reading Metadata.....	34

Keyword List Pane.....	34
Refining the Keyword List.....	35
Using hierarchical keywords with Resize .....	35
<b>Culling Photos in Browse.....</b>	<b>36</b>
Use Auto Advance when culling your photos.....	37
<b>Sending images to another application for editing .....</b>	<b>37</b>
<b>Using ON1 Resize 2020 with two displays .....</b>	<b>38</b>
Turning Dual Mode on.....	38

## **Part 3: Using ON1 Resize 2020 .....39**

<b>When Should I Use ON1 Resize? .....</b>	<b>39</b>
--	-----------

<b>ON1 Resize Main Screen Overview .....</b>	<b>40</b>
--	-----------

<b>Navigating the Preview Area.....</b>	<b>41</b>
---	-----------

Navigator, Levels and Info .....	41
The Navigator Pane .....	41
The Levels Pane.....	41
The Info Pane.....	42
Crop tool.....	42
Working with the Crop Tool Overlay .....	42
Crop Tool Options Bar.....	43
Crop Tool Modes .....	43
Leveling the Image.....	44
Adjusting the Image Size.....	44
Using Document Size Presets.....	44
Settings pane .....	46
Image Type.....	46
Method .....	46
Texture Controls .....	46
Sharpening pane .....	47
Film Grain pane .....	48
Tiling pane.....	49
Gallery Wrap.....	50
Presets.....	51
Saving a Preset .....	51
Soft Proofing in Resize.....	52
Understanding Resize: How Big Can I Print?.....	53
How Much Resolution Do I Need? .....	54

## **Part 4: Export, Printing and Sharing.....55**

<b>Export .....</b>	<b>56</b>
---------------------	-----------

File Type.....	56
Location.....	56
Rename.....	57



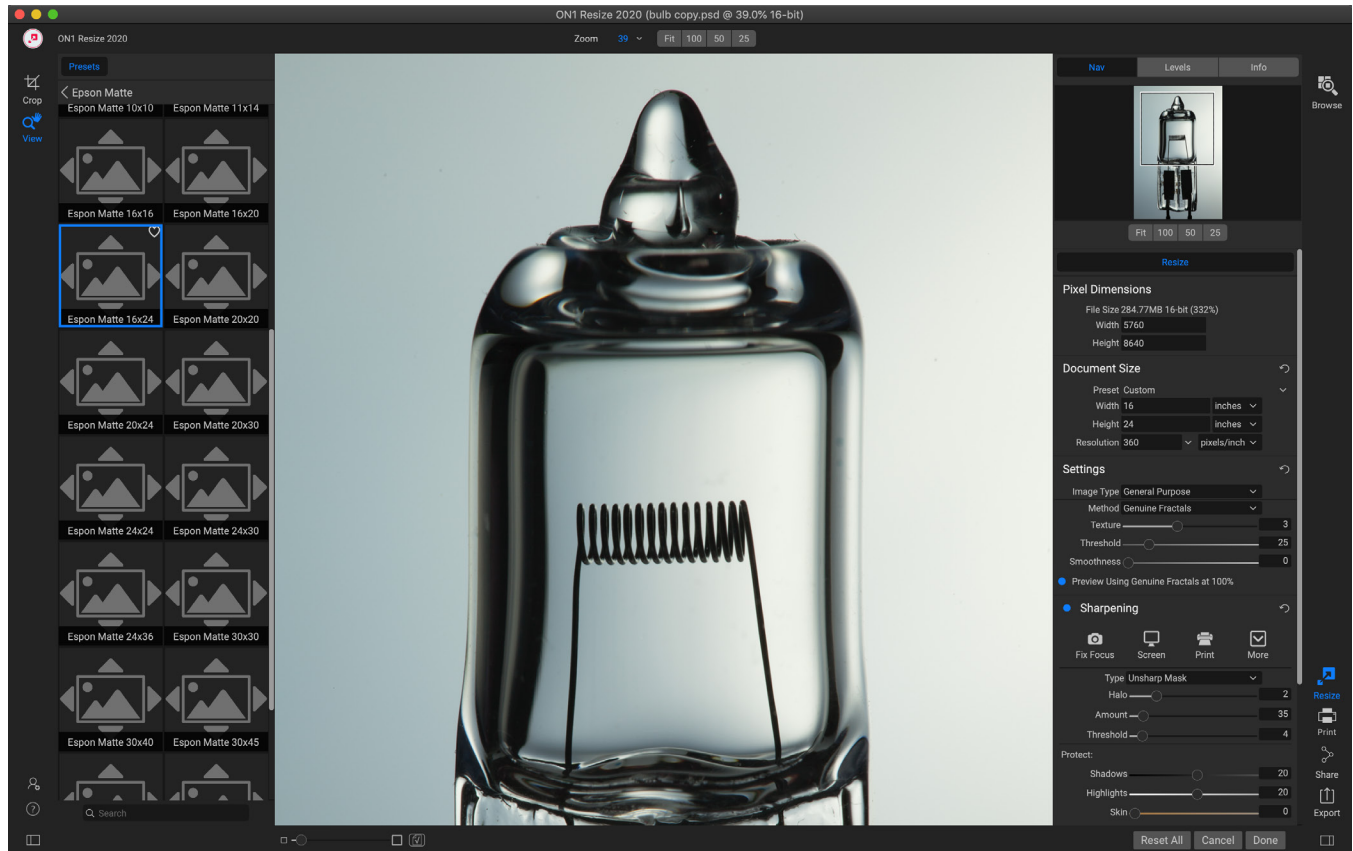
Photo Size .....	57
Watermark .....	58
Sharpening .....	58
Tiling .....	59
Gallery Wrap.....	59
Export Presets .....	60
Exporting options .....	60
<b>Printing .....</b>	<b>61</b>
Printer Pane .....	62
Printing to a file.....	62
Print Area Pane .....	63
Page size vs. print size.....	63
Watermark pane.....	64
Sharpening pane .....	64
Basic printing with Resize .....	64
Printing Multiple photos.....	65
Printing contact sheets .....	66
<b>Sharing to SmugMug .....</b>	<b>67</b>
<b>Send to Other Applications .....</b>	<b>68</b>
<b>Other Sharing Options (MacOS Only).....</b>	<b>69</b>

## **Part 5: ON1 Resize 2020 Reference .....70**

<b>Browse menus .....</b>	<b>71</b>
ON1 Resize (MacOS Only) .....	71
File Menu .....	71
Edit Menu .....	72
Album Menu .....	72
Photo Menu .....	73
View Menu .....	74
Window Menu.....	75
Help.....	75
<b>Resize Menus .....</b>	<b>76</b>
ON1 Resize (MacOS Only) .....	76
File Menu .....	76
Edit Menu .....	76
Settings Menu .....	77
View Menu .....	77
Window .....	78
Help.....	78
<b>Preferences.....</b>	<b>79</b>
General Settings.....	79
Scrolling Controls .....	79
Preview Background Color .....	79
Accent Color.....	79

Application Language.....	79
Legacy Browse Tab .....	80
Check for Update on Launch .....	80
Default Browse Location .....	80
Files.....	80
What to Edit .....	80
Sidecar Options .....	80
Apply Lens Correction Automatically .....	81
Treat RAW+JPG Pairs as a Single Photo.....	81
Plug-Ins.....	81
Photoshop .....	81
Lightroom .....	81
System.....	82
Memory Usage .....	82
Scratch Folder Location.....	82
Browse Cache .....	82
Performance .....	82
Services .....	83

# PART 1: ON1 RESIZE 2020 OVERVIEW



ON1 Resize 2020 is a professional-quality resizing tool that also incorporates a complete photo organizer. Resize 2020's primary features include:

- **ON1 Resize:** Resize gives you the highest quality photo enlargements of any resizing tool on the market. Using the patented, industry-standard Genuine Fractals algorithms, you can enlarge photos without the loss of sharpness or detail.
- **Browse:** Resize 2020 includes the core Browse module from ON1 Photo RAW 2020, giving you a lightning-fast browser and organizer. Simply point it to any folder of photos to preview, sort, tag and change metadata instantly.
- **Batch Processing:** The Export feature in Resize makes it easy to export a single photo or hundreds of them, using Resize's core technology. Not only can you control the size, but the file type, naming, location, and so on. You can even apply gallery wrap or watermarks on the fly.
- **Raw Processing:** Resize 2020 features the raw processing engine from ON1 Photo RAW. When you browse, preview and resize raw photos, this powerful engine gives you fast, true-to-life color and detail.
- **Printing:** You can print from inside ON1 Resize 2020. Control the paper size, margins and printer profiles for the ultimate print.

If you have an existing image editing and workflow app such as Adobe's Photoshop, Lightroom or Photoshop Elements, ON1 Resize 2020 can also work as a plug-in to these apps, giving you direct access to all of Resize's image-scaling power.

# Using the Help System

You can find and watch free video tutorials at the ON1 Resize 2020 Product Training site, available at ON1.com. This is the best and quickest way to dig into the ON1 workflow and discover new techniques that will help you with your photo editing and organizing. There, you can search our Knowledge Base for frequently asked questions, common issues and more.

The Help menu in ON1 Resize 2020 includes links to the training site, as well as our extensive library of video tutorials and more.

## System Requirements

	MINIMUM	RECOMMENDED
<b>OPERATING SYSTEM</b>	macOS 10.12 through 10.15; Windows 7, 8 or 10 releases, 64-bit only	macOS 10.14 or 10.15; Windows 10 current releases, 64-bit only
<b>PROCESSOR</b>	Intel Core i5, Xeon or better processor	4-core Intel Core i5, Xeon or better processor
<b>RAM</b>	8 GB	16 GB
<b>HARD DRIVE</b>	1.5 GB for installation	1.5 GB for installation Fast (7200 RPM) or SSD drives
<b>DISPLAY</b>	OpenGL 3.3 compatible video card with 512 MB video RAM, 1280x720 resolution	OpenGL 4.2 compatible video card with 2 GB dedicated video RAM, 1920x1080 resolution
<b>THIRD-PARTY APPS SUPPORTED (PLUG-IN)</b>	Photoshop CS6; Photoshop Elements 14 Lightroom Classic 6	Photoshop CC 2018; Photoshop Elements 2018 Lightroom Classic CC 2018
<b>OTHER</b>	Internet connection for activation and auto update checking.	Internet connection; hardware display calibration tool

## Installation

To install ON1 Resize 2020, double-click the installer icon and allow the installer to guide you. Before installing or updating, close any supported host applications, such as Adobe Photoshop, Photoshop Elements, or Lightroom, as well as any previous versions of ON1 products.

### MACOS

The application is installed in the ON1 Resize 2020 folder in the Applications folder.

All plug-in files for supported host applications (such as Adobe Photoshop, Lightroom, or Photoshop Elements) found during the installation process will be installed automatically; a summary of installed plug-ins will be displayed at the end of installation. If a previous version of Resize is found, it will be maintained or replaced based on your preference during installation.

Support files are installed into /Library/Application Support/ and ~/Library/Application Support/ folders.

## WINDOWS

The application is installed in the ON1 Resize 2020 folder in the \Program Files\ON1\ directory.

All plug-in files for supported host applications (such as Adobe Photoshop, Lightroom, Photoshop Elements) found during the installation process will be installed automatically; a summary of installed plug-ins will be displayed at the end of installation.

If a previous version of ON1's Resize is found, it will be maintained or replaced based on your preference during installation.

Support files are installed into \ProgramData\ON1\.

## UPGRADING FROM PREVIOUS VERSIONS

If you have earlier versions of ON1 Resize 2018 or 2019 on your computer, the installation process will move over any cataloged folders, albums, and metadata presets.

**NOTE:** The Smart Album feature in previous versions of ON1 Resize has been replaced by the expanded Filters pane. During the upgrade process, any smart albums will be converted to static albums and custom filter presets. For more information, see [page 19](#) (Albums pane) and [page 21](#) (Advanced Search pane).

## Launching ON1 Resize 2020

To launch Resize 2020 as a standalone app, with access to both the Browse and Resize modules, follow these steps:

### MACOS

1. Open the Finder.
2. Navigate to the Applications folder.
3. Navigate to the ON1 Resize 2020 folder.
4. Double-click on the ON1 Resize 2020 application icon.

You can add ON1 Resize 2020 to your dock for easy access by clicking and holding the icon in the dock and selecting the Keep In Dock option. If you use Launchpad it can be found there as well.

## WINDOWS 7

1. Go to your Start Menu.



2. Select the ON1 group.
3. Select ON1 Resize 2020.

If you selected the “Add Icon to Desktop” option during installation you can also access ON1 Resize 2020 from there.

## WINDOWS 8.1 AND WINDOWS 10

1. Open the Start screen by pressing the Window key.
2. Select ON1 Resize 2020.
3. If you selected the “Add Icon to Desktop” option during installation you can also access ON1 Resize 2020 from there.

To launch ON1 Resize 2020 from an external application, such as Adobe Photoshop or Lightroom, see the sections below for complete instructions.

## Licensing and Registration

When you first launch ON1 Resize 2020, the upper left side of the main window will have two buttons, Buy Now and Sign-In.

### IF YOU HAVE PURCHASED ON1 RESIZE 2020:

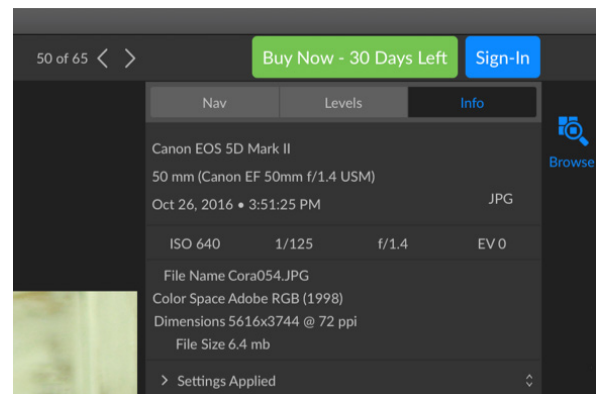
Click on the “Sign-in” button and fill in your ON1 account information (email and password) to register the app with us. (You should have set up an account when you purchased the software.) If the computer you are signing in with does not have access to the internet, you can manually register your software by clicking on the “No Internet connection” link in the license dialog.

Your license lets you install ON1 Resize 2020 on five computers. When you enter your ON1 account info, Resize 2020 communicates with the ON1 activation server and registers your software for that computer.

If you wish to move your copy of Resize from one registered computer to a new one, and you are not going to be using the older machine, it is best to sign out of the old computer first. Open Resize and select Sign Out from the Help menu. This will deactivate Resize 2020 on the current machine, and you can install and sign in on another machine.

You can log into your ON1 user account area (<https://www.on1.com/login/>) at any time to download the software, see the number of computers you have registered, and make basic changes to your account information, including your email address, password, and notifications.

If you have issues related to installing or activating Resize, please contact ON1 customer support, which can be reached by clicking on the ON1 website's Support tab (<https://on1help.zendesk.com>).



*When you first launch ON1 Resize, sign in with your ON1 User ID (which you set up when you purchased the software) If you downloaded the app to try out, you can see how many days are left in your free trial.*

## TRIAL VERSION

ON1 Resize 2020 can also operate as a fully featured trial version for 30 days from when you first launch it. This gives you time to evaluate the product and see if it fits your needs. Each time you launch Resize during the trial period, the Buy Now button will tell you how many days remain in the trial.

You can purchase ON1 Resize 2020 at any time by clicking on the Buy Now button. Once you do that, click the Sign-In button the next time you launch the product and enter your ON1 account information. If your trial period has ended, Resize will present you with an activation window when you launch the app. There, you can enter your ON1 account info to activate the app.

## PRODUCT IMPROVEMENT PROGRAM

We believe that the best products are made by listening to our customers. We use many methods to gather your ideas and feedback including: emails, surveys, direct conversations, market analysis and the Product Improvement Program. The Product Improvement Program is built into our software and gathers information about how our software is used. It is the most accurate way for us learn what features are important to you and how our products fit into your workflow.

Enrollment in the program is voluntary. When you participate, we collect basic information about how you use our programs and basic information about your computer. This information helps us learn what features are important to you and how we can make our software easier to use. No personal information is collected and you will not be contacted.

You can choose to participate in the Product Improvement Program the first time you launch ON1 Resize 2020. You can change your participation later, just click the Help menu, then Help Improve ON1 Products.

To learn more about the Product Improvement Program, go to the Support area of the ON1.com website.

## Uninstalling ON1 Resize 2020

To uninstall ON1 Resize 2020, follow these instructions:

First, deactivate your product: open ON1 Resize 2020 and select Sign Out... from the Help menu. (This will allow you to transfer your license to another computer.)

### MACOS

1. Go to the Applications/ON1 Resize 2020/Documentation folder.
2. Double-click on the Remove ON1 Resize 2020 application.

### WINDOWS

1. Go to Control Panels.
2. Under Programs select Uninstall a program.
3. In the list that comes up select ON1 Resize 2020 and then click on the Uninstall button.

# Working with Files

ON1 Resize 2020 can view and open the following file types, in RGB color mode, at either 8 or 16 bits per pixel:

- Raw files from most major camera manufacturers (file extension varies by manufacturer)
- Digital Negative (DNG)
- Photoshop (PSD)
- Photoshop Large Document (PSB)
- Tagged Image File Format (TIFF)
- Joint Photographic Experts Group (JPEG)
- Portable Network Graphic (PNG)
- High Efficiency Image Format (HEIC)

When you wish to export or share images, Resize can save files in PSD, PSB, TIFF, JPEG, and PNG format.

**NOTE:** ON1 Resize 2020 can view and catalog most standard video formats inside Browse. While you cannot play or edit video from within Resize, you can perform file management tasks and edit metadata. Double-clicking on a video file in Resize will launch the default video player for your computer.

## ON1 Resize 2020 Modules

ON1 Resize 2020 has two modules: Browse and Resize, which are accessible via the module selector on the left side of the screen. Each module focuses on one task, giving you access to just what you need to get that task done. Browse handles file-management operations, and Resize is used to enlarge images, largely for printing to large-format printers.

When used as a standalone application, Browse is the default module when you launch the app. It is used to navigate through your drives and cloud services to find images, as well as to import photos. When you're using ON1 Resize 2020 as a plug-in, the Browse module is disabled, although the printing, export and sharing options are still available. As a plug-in, the Resize module is the only visible module.

### THE MODULE SELECTOR

The Module Selector is on the right side of the screen, visible at all times. At the top of the selector is the Browse icon, while the Resize icon is at the bottom of the selector, along with icons for printing, sharing or exporting an image or group. (For more on this, see [“Export, Printing and Sharing” on page 55.](#))

To open a photo in the Resize module, select it in Browse and click the Resize icon. When you are working in either Browse or Resize, clicking on the Print, Share or Export icons will open that option.



# Using Resize 2020 as a Plug-in

In addition to using ON1 Resize as a standalone app, with full file management capabilities in the Browse module, you can easily export files for resizing from Adobe Photoshop, Lightroom Classic, or Photoshop Elements.

**NOTE:** The Browse module is not accessible when using ON1 Resize 2020 as a plug-in.

## USING RESIZE WITH ADOBE® PHOTOSHOP®

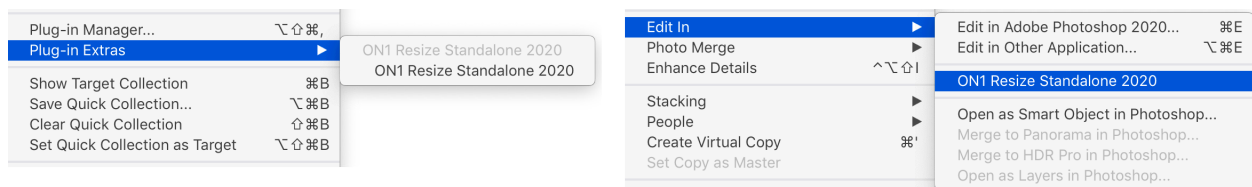
ON1 Resize 2020 is accessible from within Photoshop via the File > Automate menu. Selecting that item will open the image in Resize. When you are finished resizing your image, clicking the Done button inside Resize will apply the transformation and save it back to Photoshop at the new dimensions. (Clicking Cancel inside Resize will close the file without making changes.)

## USING RESIZE WITH PHOTOSHOP® ELEMENTS

ON1 Resize 2020 is accessible from within Photoshop Elements via the File > Automate menu. Selecting that item will open the image in Resize. When you are finished resizing your image, clicking the Done button inside Resize will apply the transformation and save it back to Photoshop at the new dimensions. (Clicking Cancel inside Resize will close the file without making changes.)

## USING RESIZE WITH LIGHTROOM® CLASSIC

ON1 Resize 2020 can be accessed from within Lightroom Classic CC, providing an integrated, round-trip workflow of your images. There are two primary ways to use ON1 Resize 2020 with Lightroom, via the Plug-In Extras command in the File menu and the Edit In command in the Photo menu. Both generally work the same way, the primary difference being where you choose the file format of the photo being opened in Resize. Using Plug-In Extras opens the file using the format chosen in Resize's Plug-Ins Preferences pane, while Edit In lets you choose the file format inside Lightroom.



*You can access Resize from Lightroom Classic from either of two submenus, File > Plug-in Extras (above, left), or Photo > Edit In (above, right). There are small differences between the options, but both will get you to Resize quickly. Which one you choose is open largely to personal preference.*

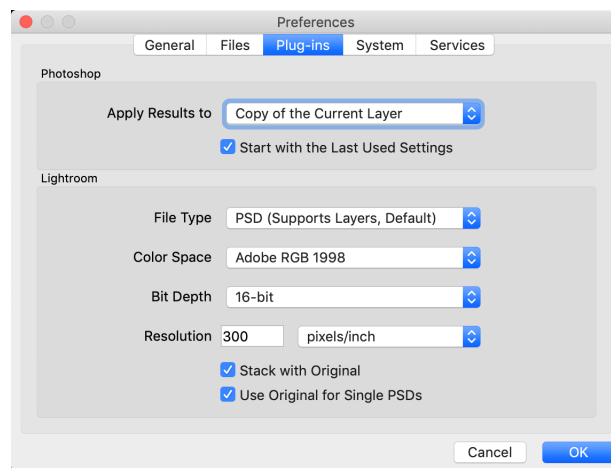
If you use Resize Lightroom plug-in, we recommend using the Photoshop format (.PSD) as the exchange file format for maximum compatibility. If your saved file will be larger than 2GB, or more than 30,000 pixels on a side, your image will automatically be saved in the .PSB (or Large Document) format. This is a newer version of the PSD format designed for larger file sizes, and is fully compatible with Resize.

## Using 'Plug-In Extras'

To edit an image in Resize, select the image in Lightroom, go the File menu and select the Plug-In Extras submenu, and choose ON1 Resize Standalone 2020.

When you access ON1 Resize 2020 through the Plug-In Extras menu there are important file-handling options that are controlled in the Plug-ins tab of the Resize Preferences window. These need to be configured in advance, based on your desired workflow. Once these are set, all images sent to Effects 2020 via the Plug-In Extras submenu will use these characteristics:

- **File Format:** Determines what type of file will be created. The default is PSD, which maintains layers. You can also select JPG or TIFF, if you prefer those formats.
- **Color Space:** The color space drop-down menu determines what RGB working color space is used; Adobe RGB 1998, sRGB or ProPhoto RGB.
- **Bit Depth:** The bit-depth drop-down menu determines the bit depth (8 or 16 bits per pixel).
- **Resolution:** The resolution drop-down menu determines the resolution of the file.



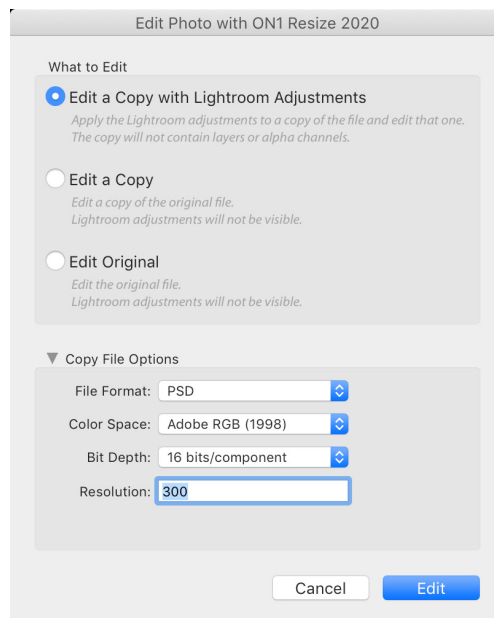
*If you are using Lightroom's Plug-In Extras menu to export photos to Resize, you can set the file type, color space, bit depth, and resolution in Resize's Plug-ins Preferences pane.*

For complete information on Resize's Preferences, see ["ON1 Resize 2020 Reference"](#) on page 70.

## Using 'Edit In'

The editing conditions when using Photo > Edit in are the same as those when you use the File > Plug-In Extras: Lightroom will open the exported photo in Resize. With this option, Lightroom will ask you each time how you wish to edit the selected image. You have three editing options—Edit a Copy with Lightroom Adjustments, which makes a copy of the file that includes any edits you have made in the photo; Edit a Copy, which copies the original photo without any changes made in Lightroom; or Edit Original, which is not available if the photo being sent to Resize is a raw file.

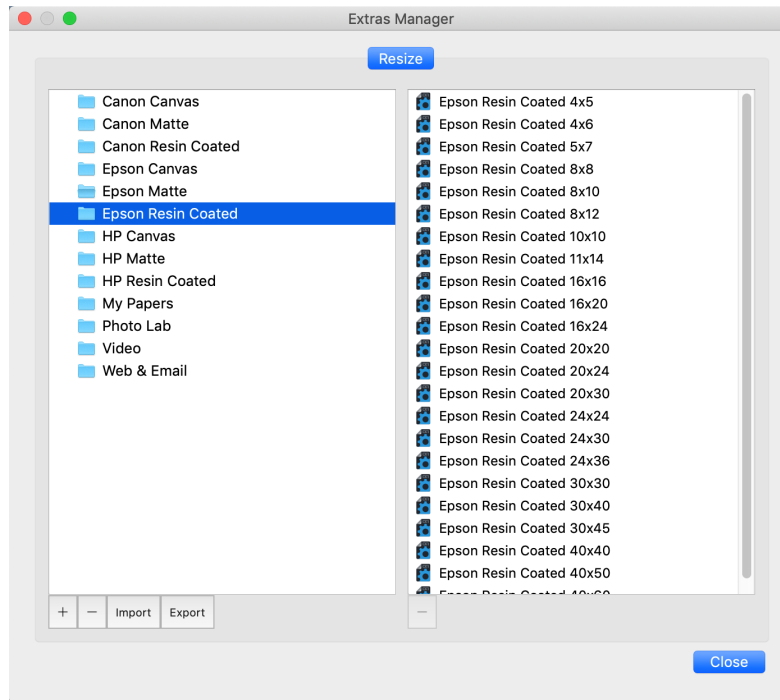
You can also can set the file type (TIFF, Photoshop or JPEG), the color space and bit depth for the resultant file.





# Extras

ON1 Resize 2020 comes with a set of paper (type and size) presets for use within Resize, and you can import, export and manage presets via the Extras manager in either the Browse or Resize modules.



To import extras, choose Manage Extras from the File menu in Browse or Resize, then click on the Import button in the footer of the left column. A dialog box will appear where you can select the files to import. If you want to import an entire folder, open the folder, select the first file, then shift-click on the last file. Click Import when your selection is complete. Then, select a category for your extras to live in. This is where you will be able to find it inside Resize. You can select from an existing category or create a new one.

When your extras have been imported, they will be visible in the selected category.

## ORGANIZING PRESETS

When you are in the Extras Manager, you'll see '+' and '-' buttons, which let you add or delete categories to the list of your presets. You can also add subfolders to any of the categories, which can help organize and manage large collections of presets. You can use drag-and-drop to move existing categories into another, or you can add a category subfolder to an existing category by clicking on the category and then clicking on the '+' button in the Extras Manager window. (When you are importing presets, Resize gives you the opportunity to add presets to any category folder or subfolder.)

In addition to the Import option, the Presets section of the Extras Manager will also let you export presets, for sharing with other users, or to save seldom used presets for archiving purposes. To export a complete category, click on the category in the list on the left side of the window and click on the Export button. This will export a folder that contains a single .ONpreset file, which includes all of the presets from that category. If you would like to export a single preset, click on the preset from the list on the right side of the window and click Export.

## HOW TO DELETE EXTRAS

You can remove imported extras using the Extras Manager. Follow these steps:

1. Open the Extras Manager in any module (File > Manage Extras).
2. Click on the extras type that contains the content you wish to remove. This will display categories within that type.
3. To delete an entire category, select in the left column and click on the Delete button in the footer of the left column.
4. To delete individual extras, select them in the right column and click on the Delete ('—' in the Presets tab) button in the footer of the right column.

Deleting extras is permanent and cannot be undone.

# PART 2: ORGANIZING WITH BROWSE

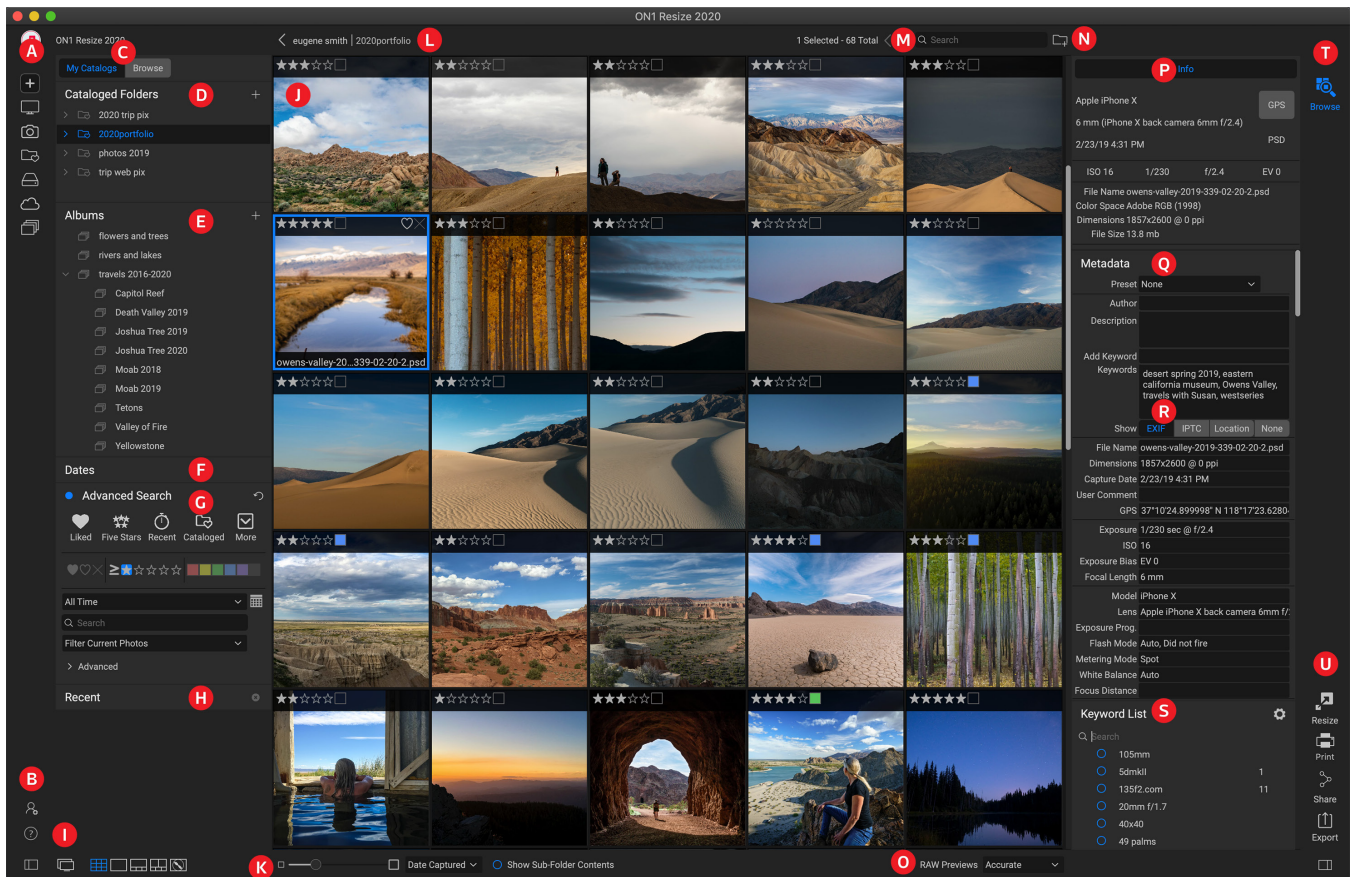
ON1 Resize 2020's Browse module is a powerful and incredibly fast photo browser and manager. It gives you one place to find, view and manage your images, no matter where they are located.

Browse is an ideal environment for performing quick sorts and edits after a shoot: You can import, then view, your photos immediately without having to wait for a long cataloging or preview-creation process. You can rate, add keywords and flags, even remove photos, all from within Browse.

But Browse also has a sophisticated indexing system built in, designed to let you get access to your favorite folders of images in a jiffy; just add a folder to the My Catalogs pane, and it will index your photos in the background wherever they reside, giving you increased search capabilities and even faster access to your most important photos.

Some of Browse's key features:

- Find your photos fast, wherever they are: local or network drives and cloud-based services.
- Add any metadata—from creator to keywords and GPS and much more—quickly to a photo or group of photos, and use metadata templates to apply often-used metadata information during the import process.
- Catalog important folders of photos, to get the fastest access to your most important photos across multiple sources, while still preserving your folder hierarchies and locations.
- View and cull photos from a shoot in the way that works best for you, in four different ways: Grid, Filmstrip, Detail and Compare views. In addition, use the Map view to see where you shot your photos, or add location information to photos without GPS metadata.
- Dual-display capability that lets you work more efficiently. See Grid view on one display, and Detail view on another, or use this mode to present photos on a TV or projector.
- Quickly find photos based on their creation date, or any combination of metadata information, including time of day, camera/lens type, file type and more.
- Create quick albums from a selection of photos, or use advanced searching methods to create 'virtual' albums based on metadata.
- Copy, move, delete and rename files.
- Sort, flag, rate or color code your images.



## ON1 Browse Main Screen Overview

The Browse module has three main sections: the Browse/Presets panel on the left side of the screen, the Preview window in the center, and the Photo Info panel on the right side. The main components of Browse module include:

- A. **Shortcuts:** This palette contains shortcuts to the Getting Started window, as well as your most common photo storage locations.
- B. **Preferences/Help icons:** Accesses the ON1 Help menu or Resize's Preferences window.
- C. **My Catalogs/Browse Panels:** Switch between cataloged folders and local drives/cloud sources by clicking on the tabs.
- D. **Cataloged Folders/Local Drives Panes:** Displays your cataloged folders (shown) or local disks and cloud sources, depending upon which tab has been selected.
- E. **Albums Pane:** This pane lets you to create albums (or collections) of images. Albums can be grouped into subfolders for easy organization.
- F. **Dates Pane:** Search for photos based on the capture date.
- G. **Advanced Search Pane:** Search for photos in your library based on any metadata, and save your searches to find them later. (Formerly known as the Filters pane.)
- H. **Recent Pane:** This keeps track of recently opened files and folders.
- I. **View Selector:** (Icons from left) Open/close the Browse/Presets panel; toggle Dual Display Mode on and off; switch between Grid, Detail, Filmstrip, Compare and Map views.

- J. **Preview:** The window where you can view your images in thumbnail or detail view.
- K. **Thumbnail Size/Sort Options:** The slider adjusts the thumbnail size, while the Sort By pop-up adjusts sort order based on standard selection criteria, such as file name, date captured and more. (You can also create your own custom sort order.)
- L. **Breadcrumbs:** This shows the path of the selected image or folder in the Preview area, displaying the number of files and folders you are viewing.
- M. **Search Field:** Lets you search in the current view for any available metadata based on the search string. (Uses the Advanced Search pane.)
- N. **Copy to My Catalogs:** Clicking this button lets you add the currently selected photos to any of your existing cataloged folders.
- O. **Raw Preview Mode:** Lets you set how you would like to view photos in Detail mode. Fast will use embedded previews from the photos, while Accurate will generate a color-balanced preview.
- P. **Info Pane:** This section will give you detailed metadata about your image when available. (Also displays Navigator and Histogram panes when viewing in Filmstrip, Detail and Compare modes.)
- Q. **Metadata Pane:** This pane will show your metadata for the selected image.
- R. **EXIF/IPTC/Location Info:** Displays additional detailed information about the selected file.
- S. **Keyword List:** All keywords found in your image catalog.
- T. **Module Selector:** Use this to switch between the Browse and Resize modules.
- U. **Export/Print/Share:** Shortcuts for exporting, printing and sharing selected photos. The bottom icon will open and close the Info pane.

## WORKFLOW BASICS IN BROWSE

When using ON1 Resize 2020 in standalone mode, you have a great deal of flexibility in how you wish to work with your photos. You can browse for existing photos in folders that are connected to your computer (including cloud services like Dropbox, Google Drive and Microsoft OneDrive). If you store your photo library in a specific location on an internal or external hard drive (or multiple drives), you can have Browse index those folders. This process ‘catalogs’ the photos, reading their metadata and building previews, letting you navigate and access your photo library much more quickly than if you were to simply look at a random folder of images. Cataloging a folder doesn’t move or change your photos; it just makes it easier for you to find and work with them inside Resize.

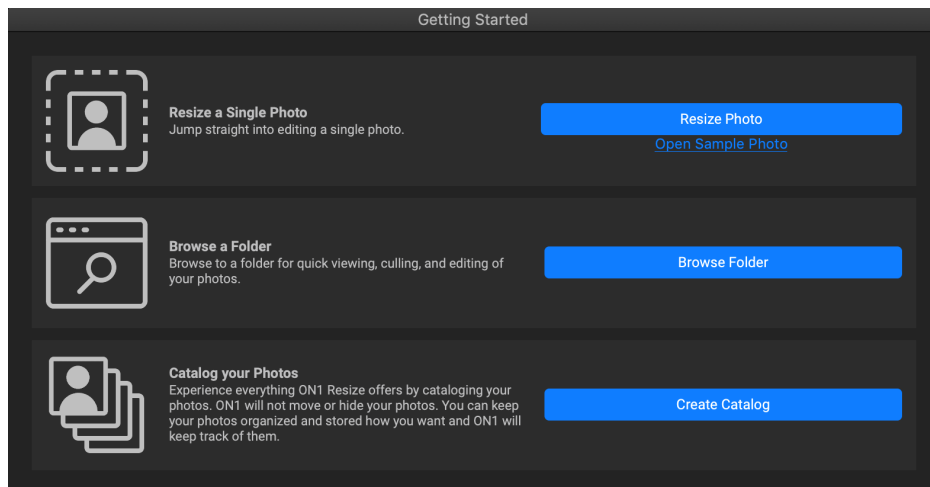
### Getting Started

The first time you launch Resize as a standalone app, Browse displays a Getting Started window, designed to help you get working quickly (shown on the following page). This window has three options:

- **Resize a Single Photo:** clicking this button will give you the MacOS or Windows file-selection dialog, where you can navigate to a specific photo. Once you’ve chosen an image, it will open directly within the Resize module.
- **Browse a Folder:** this button will open the file-selection dialog for your computer. There, you can navigate to a specific folder of photos. Clicking the Open button in that dialog will display that folder’s photos in the Browse Preview area.



- **Catalog Your Photos:** clicking this button will let you choose a folder to be cataloged by Resize. This folder (and any subfolders of photos within it) will be added to the My Catalogs pane. (See “[Cataloged Folders](#)” on page 15 for specifics on creating cataloged folders.)

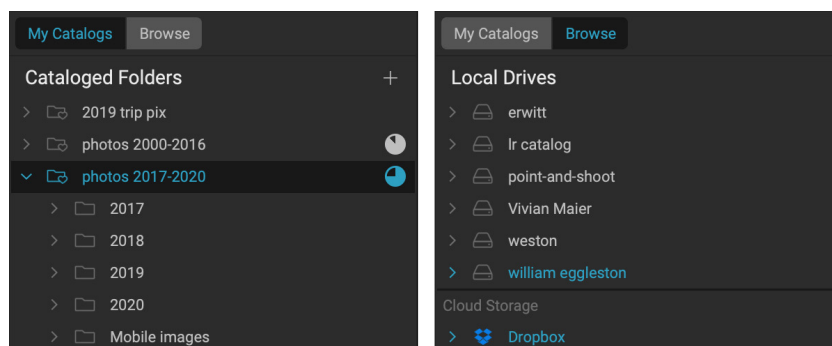


*The Getting Started window is designed to help you get working quickly with ON1 Resize 2020.*

The Getting Started window can be accessed at any time by clicking the ‘+’ button in the Shortcuts section on the left side of the Browse window (see “[Using Shortcuts](#)” on page 17), or via the Help menu.

## My Catalogs and Browse Panels

On the left side of the Browse window are two tabs, My Catalogs, which displays your cataloged folders, and Browse, which displays the local drives and cloud services on your computer. To switch between the panels, click on the appropriate tab at the top of the panel. You can hide the left panel completely by clicking on the Show/Hide Panel icons at the bottom left and right sides of the panel. (Pressing the Tab key will show and hide both the right and left panels simultaneously.)



*The My Catalogs view (above left) displays your cataloged folders, while the Browse view (above right) displays attached local drives and any cloud services you have installed on your computer.*

While the top pane in the My Catalogs and Browse panels represent two views of your library, they share the same four panes for file-related tasks: Albums, Dates, Advanced Search, and Recent. When using either panel, the content of these panes remain identical. The Browse panel includes a list of all your local drives and cloud storage services, while the My Catalogs panel lists all of your cataloged folders.

**NOTE:** Earlier versions of ON1 Resize combined the Cataloged Folders and Local Drives tabs into a single Browse panel. If you prefer that arrangement, check the Legacy Browse tab option in the General Preferences screen. (See [“General Settings” on page 79.](#))

## Navigating Sources

To view the contents of any folder in the Cataloged Folders or Local Drives panes, click on the triangle next to the folder name. This will display the photos and subfolders within the selected folder inside the Preview area. To view the contents of a subfolder, either click on the subfolder inside the Folders pane, or double-click on it in the Preview area. (You can use the breadcrumbs bar at the top of the Preview area to navigate back to the top of your folder system.)

**TIP:** Any pane in Resize can be collapsed by clicking in the pane’s title bar; a Hide/Show link is visible when you move your cursor over the title bar, but the entire title bar is clickable.

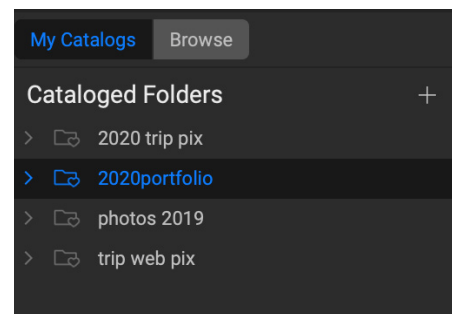
## CATALOGED FOLDERS

A cataloged folder is a shortcut for your favorite or most-used folders of photos. A folder designated as cataloged is cached in the background to improve the speed of loading those folders (and any subfolders) and their photos. Cataloged folders are ideal for portfolios, your favorite photos, or for your primary library of photos. Cataloged folders are necessary when using the Advanced Search feature to search for photos across multiple folders.

You can make any available folder a cataloged folder by clicking on the ‘+’ button at the top of the Cataloged Folders pane, or by dragging a folder from the Preview area onto the ‘+’ button. The cataloging process is designed to work in the background, so it doesn’t affect other work you do in any ON1 Resize 2020 module. While the app is cataloging a folder, you’ll see a progress circle next to the folder name; once the folder has been cataloged, the circle will disappear. (Shown in the screenshot on the previous page.)

When you first catalog a folder, you will be prompted to choose the size of the previews that are generated during the cataloging process. The three thumbnail options are:

- **Standard**, which extracts the image metadata and EXIF thumbnail and creates a high-quality thumbnail and a fit-screen-sized preview.
- **Medium**, which extracts metadata, EXIF thumbnail and creates a high-quality thumbnail.
- **Minimal**, which extracts metadata and the EXIF thumbnail only.



*The My Catalogs pane displays any folders you have cataloged. You can add additional folders by clicking on the ‘+’ icon at the top of the pane.*

For most purposes, you'll want to choose the default preview size, Standard. If, however, you are working with a system that has disk space restrictions, or have a network connection to your cataloged folder, choose either Medium or Minimal. (You can change the preview size later by right-clicking on the folder in the My Catalogs list and selecting the Preview Size option.)

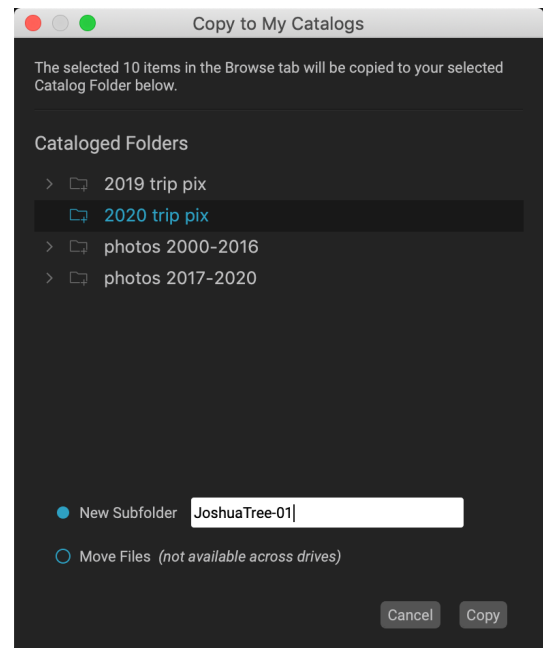
To remove a cataloged folder, right-click on the folder in the pane and choose Remove Cataloged Folder.

## Adding photos to existing cataloged folders

You can add photos from any location inside Browse to an existing cataloged folder via the Copy to My Catalogs option. Then, when working in Browse, select the photos you wish to add, and choose Copy to My Catalogs from the File menu, or via the folder icon (with a '+' button) to the right of the search bar at the top of the Browse window.

Inside the Copy to My Catalogs dialog box, you can choose which cataloged folder you wish to copy the photos, can add them to a new subfolder, and choose whether to move the photos or copy them.

Moving the files is only available when you are moving the photos to a new location on the same drive; otherwise, a copy of the file is made in the new location.



The Copy to My Catalogs dialog box lets you copy or move selected photos into your existing cataloged folders.

## LOCAL DRIVES

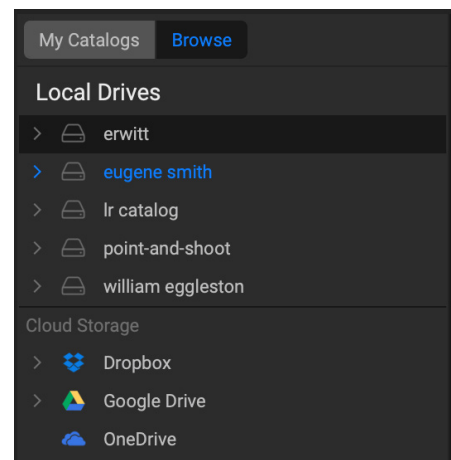
Browse automatically recognizes any disk (volume) inside or attached to your computer. This includes internal and external hard drives, optical drives, thumb drives, digital camera memory cards, digital cameras, any devices that support USB Mass Storage, and network-attached services (including mapped volumes on Windows).

Disks appear in the Local Drives pane with a hard drive icon next to them. Keep in mind that some disks, (like optical drives) are often read-only. You will be able to view a copy of a photo, but will be prompted to save the image to a new location if you wish to edit it.

## Cloud Storage Services

Browse supports cloud storage services from Dropbox, Google Drive, and Microsoft OneDrive. These services—when installed on your computer and other devices—keep local copies of your images on your computer, and Browse finds and monitors these locations automatically. If you edit an image stored in one of these locations they are automatically updated to the cloud.

During the installation process, ON1 Resize 2020 automatically looks for the default installation locations for these services. If you do not have one of these services installed, or you have it installed to a non-standard location you will be asked to install or locate the folder when you click on the source. You can hide services you don't use in the Services tab in Resize's Preferences (see [page 83](#)).

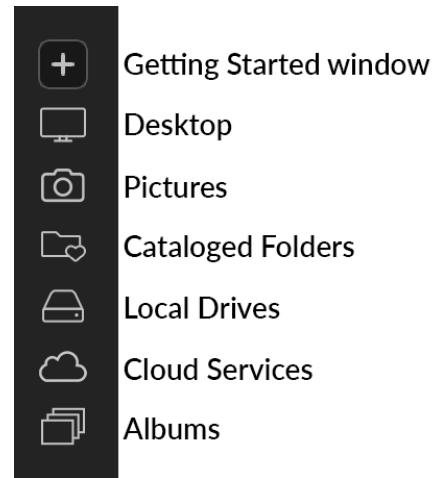


When you click on the Browse tab, ON1 Resize displays a list of drives connected to your computer, as well as any cloud services that you might have installed as well.

## USING SHORTCUTS

The Shortcuts selector on the left side of the Browse panel is a list of icons designed to give you quick access to the Getting Started window, as well as six often used file locations, and display their contents in Browse's Preview window. From top to bottom, the icons represent the Getting Started window, your Desktop, your Pictures folder, cataloged folders, local drives, cloud sources, and albums. Clicking on one of the icons will change the view of the Preview window to the selected shortcut.

By default, the Pictures shortcut uses your My Pictures folder (Windows) or Pictures (Mac). You can change the default location in the General section of the Preferences window (see [page 79](#)).



Shortcuts can be useful when you have the right panel hidden to maximize viewing in the Preview window.

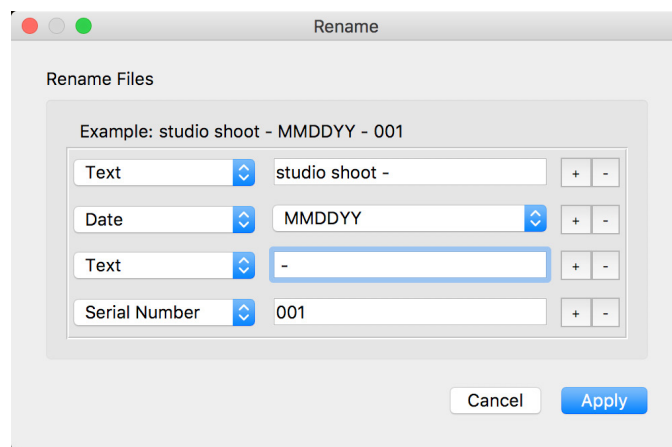
## MANAGING FILES AND FOLDERS IN BROWSE

### Deleting a folder

To delete a file or folder, click on it and press the Delete key or right-click and select 'Delete' from the pop-up menu. Then, confirm that you wish to move the file to the trash. If you have multiple files or folders selected it will move them all to the trash. If you make a mistake you can use the Undo command, although some files or folders, like those on a network volume, are deleted immediately and cannot be undone.

### Renaming a file or folder

You can rename a file or folder by selecting it, then choosing 'Rename File' from the right-click contextual menu. This will display a simple window where you can type in a new name for your image.



*The Rename dialog lets you create complex filenames for a group of images.*

If you select multiple files, choosing the Rename Files from the contextual menu will give you additional options for the batch creation of new filenames. There are four choices:

- **Current filename**, which uses the file's original name as part of the new name.
- **Text**, which lets you add any static text—a location, shoot name, etc.—to the filename.

- **Serial number**, which lets you sequence a group of images, starting with a specific number. You can use leading zeros to preserve filename sort order, and, you can start with any number.
- **Date**, will automatically grab the image's capture date and apply it to your new filename in any one of 12 different date formats.

You can use any of the four fields, in any order and amount you wish; click on the '+' button to add a new field, and the '-' button to remove one. As you work on your naming, a sample filename is displayed at the top of the window. Once you have your order set, click the Apply button to run the operation.

## Creating a New Folder

You can create a new folder from the right-click contextual menu in the preview area or selecting Add Subfolder in the Edit menu. This will create a new folder inside the selected folder; if you have files selected in the preview area, you also will get the option to move or copy the selected images into the new folder.

## Copying and Moving files and folders

You can copy and move files and folders in the ways you are accustomed to on your computer. You can select files and folders and use the Edit > Copy command to copy them to the clipboard and then Edit > Paste to paste them to new location, inside or outside of Browse. You can use this to copy a file or folder from one place to another or to attach an image to an email for example.

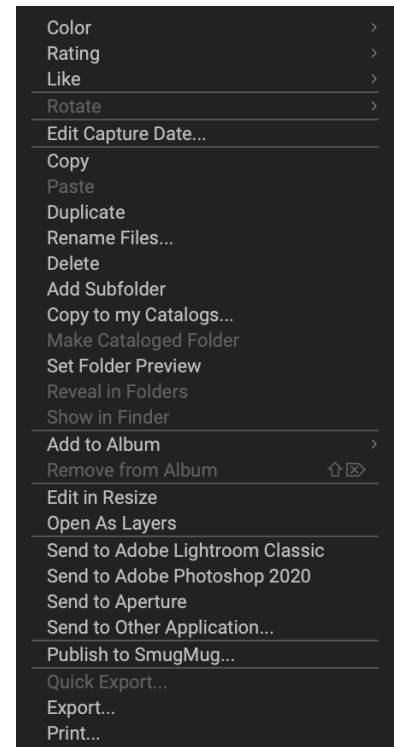
You can also use the familiar drag-and-drop functions to copy or move files and folders. Dragging and dropping a file or folder will move it if it is on the same drive or copy it to another drive. You can drag and drop in and out of Browse module.

## Show in Finder/Show in Explorer

To view a file or folder in the Finder (MacOS) or Explorer (Windows), right-click on an image or folder in the Preview area and choose Show in Finder or Show in Explorer from the pop-up menu.

## Changing a Folder's Thumbnail Preview

By default, Resize chooses an image from a folder to use as the preview thumbnail for that folder. To change this, double-click on the folder icon and select a photo you would like to use as the thumbnail. Right-click on the photo and choose Set Folder Preview from the pop-up menu.



*Right-clicking on a selection of files or folders in the main Browse window will display a set of file-management options for that selection.*

## ALBUMS PANE

ON1 Resize 2020's Albums feature lets you organize or keep track of photos on a project, event or even a broader category like a portfolio. Albums are created by selecting images manually and adding them to a new (or existing album) by dragging and dropping photos onto the pane. You can also nest albums together to help manage your collections.

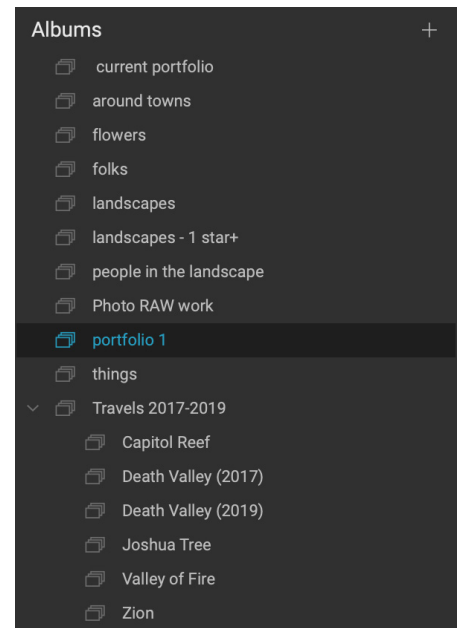
### Creating an Album

Click the '+' icon in the pane and choose Create Album... from the pop-up menu. You can also create an album by selecting photos and dragging them onto the '+' icon in the Albums pane.

### Adding Photos to an Existing Album

There are multiple ways to add photos:

- Dragging and dropping a photo on the album name.
- Selecting a photo or group of photos, right-clicking on the photo and choosing Add to Album from the pop-up menu.
- Choosing Album > Add to Album and picking the destination album from the menu.
- You can also copy a photo and paste it into an album: click on a photo, choose Edit > Copy, then click on the album in the Albums pane, and choose Edit > Paste.



### Removing Photos from an Album

To remove a photo (or photos) from an album, select them in the album, then choose Remove from Album from the Album menu, or right-click on the photo and choose Remove from Album from the pop-up menu.

### Delete an Album

To delete an album, right-click on the album name and choose Delete.

**NOTE:** The Smart Albums feature found in previous versions of Resize has been removed in ON1 Resize 2020. The expanded Advanced Search pane (formerly known as Filters) lets you find and save collections of photos that populate automatically based on specific criteria—date, camera type, or more. The Resize 2020 installer will convert any previous smart albums into both static albums in the Albums pane, and saved styles in the Advanced Search menu. See [“Advanced Search Pane” on page 21](#) for more.

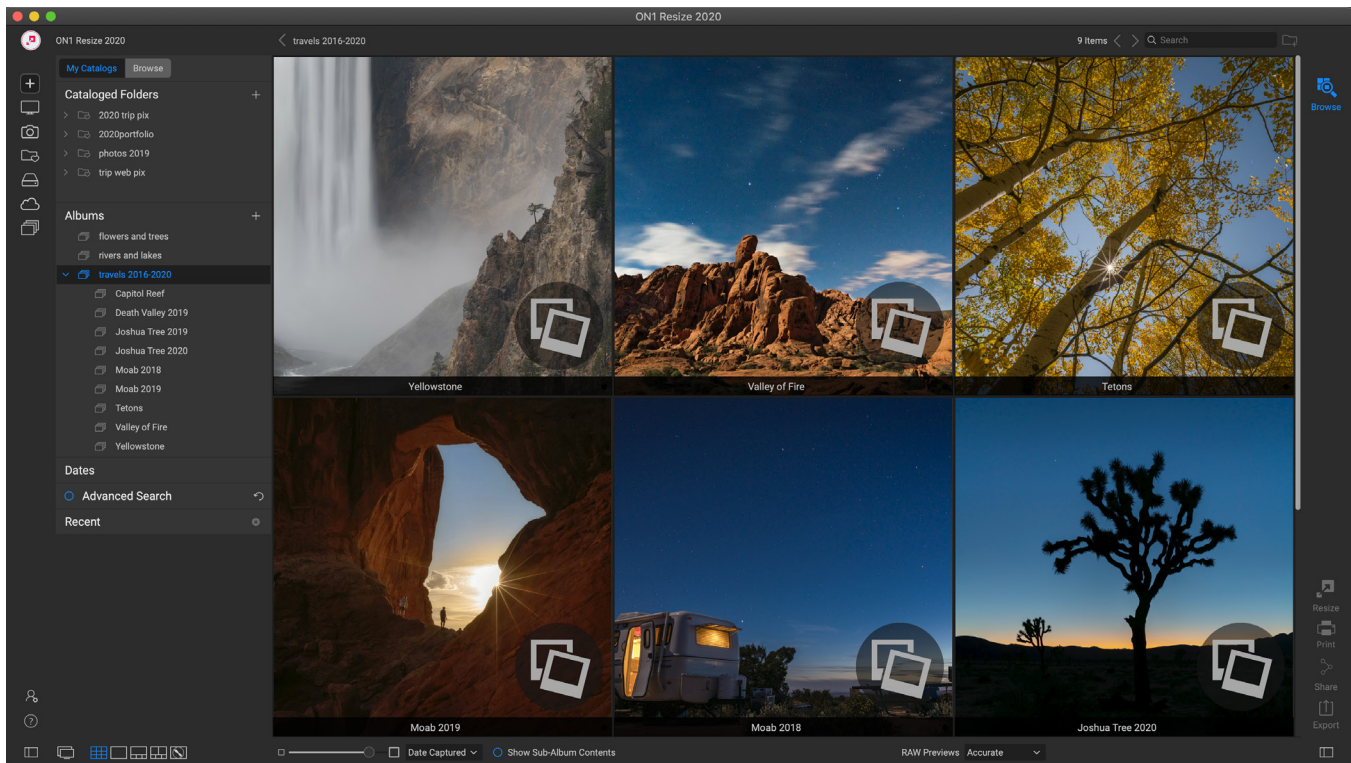
### Changing the Album Thumbnail Preview

To change the preview thumbnail of an album, double-click on the album name and select a photo you would like to use for the preview. Right-click on the photo and choose Set Album Preview from the pop-up menu.



## Nesting Albums

To create a set of nested albums, first create a blank album by clicking on the + icon in the Albums pane. You can easily add sub-albums to that new master album set by dragging and dropping the desired albums onto the new one in the Albums pane. When you click on the master album, Browse will display the albums that are part of that collection in the Preview area in a folder-style view. Double-clicking on an album icon will display the contents of that album. To view all the images in a master album set, click on the “Show Sub-Album Contents” button at the bottom of the Browse window.



*When you click on a nested album set, Browse displays the sub-albums. Double-clicking on a sub-album will open that album. If you wish to view all of the images in a nested album set, click the Show Sub-album Contents button at the bottom of the Browse window.*

To move a sub-album from a master album to the top Albums level, drag and drop it out of the master, or right-click on the sub-album name and choose Move to Top.

To change the thumbnail of a nested album, double-click on the album name and select a photo you would like to use for the preview. Right-click on the photo and choose Set Album Preview from the pop-up menu.

**NOTE:** If you drag an album onto an existing album that already contains images, you will see the top-level album’s images at the root level, along with any sub-albums.

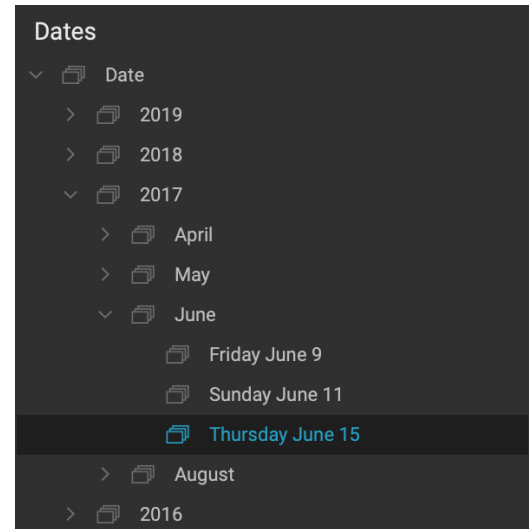


## DATES PANE

Resize's Dates pane offers a quick way to look for cataloged images based on when they were taken. Using a simple timeline interface, you can drill down into your photo library by year, month and day. It makes searching for things like birthday and holiday photos a snap.

Opening the Dates pane, you'll see a list of years, with the current year at the top (only years that have photos taken during them will be present in the list). Clicking on a year will show you all of the photos taken during that year. Clicking on the triangle to the left of the year will display a list of all the months that have photos in them, and you can keep drilling down to the day level. Drilling down to any level in the pane—year, month, day—will show all photos taken during that period.

The Dates pane works only with your cataloged folders.



## ADVANCED SEARCH PANE

The Advanced Search pane (known as the Filters pane in earlier versions of Resize) is designed to help you find photos in your photo library, based on a variety of criteria specific to photos and the metadata embedded in them. You can search based on any text associated with a photo, as well as likes, labels and star ratings, date, and keywords, and nearly any piece of metadata, from camera body and lens to aperture, ISO settings, time of day, and much more.

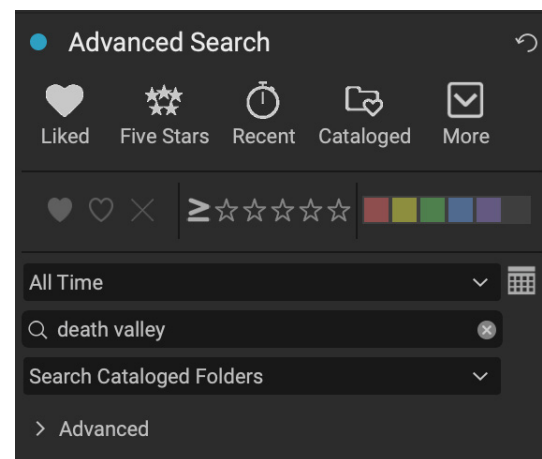
Advanced Search options are flexible: they can be applied to the current folder view or album, or they can search any or all of your cataloged folders. You can also save any search as a preset style, so you can use it again in the future.

The pane has two modes: Basic and Advanced. In Simple mode, you can filter based on likes, star ratings, color labels, time, or basic text strings; all of the selections in this mode will match ALL of the chosen criteria to be found.

The Advanced option lets you find photos based on nearly every possible metadata type or textual information associated with a photo, and you can set the filter to match all or any of the chosen criteria.

### Using the Advanced Search pane

To perform a search, either type some text in the search box at the top of the Browse window, or click the button to the left of the Advanced Search label and set your criteria. If you want to filter based upon your cataloged folders, adjust the pop-up option underneath the pane's text box. (To turn the pane off, click the Advanced Search button again.)

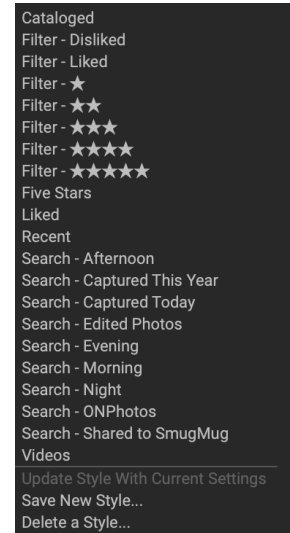


*Advanced Search's basic view lets you quickly search your current folder view, album or cataloged folders on flags, ratings, labels, time and text.*

At the top of the Advanced Search pane is a set of common styles: Liked (any photo with the Like flag set), Five Stars, Recent (last 30 days), and Cataloged. Clicking on any one of these will run that specific search. Clicking on the More icon at the far right of the pane will give you a list of preset and user-defined styles, where you can choose additional filtering criteria, save the current search as a new style, or update it, if you are modifying an existing style.

Below the styles are other options for performing a quick filter operation:

- **Flags:** Liked (represented by a heart filled in), disliked (X) or not set (empty heart). Click on the icon to turn that setting on.
- **Star ratings from zero to five:** Click on the greater than or equal symbol to the left of the stars to get a pop-up menu that lets you set the filter to show the exact number of stars, greater than or equal to the number of stars, or less than or equal the number of stars.
- **Color labels:** Clicking on the color will find all photos that have that label applied to them; you can select multiple color labels by clicking on additional colors.
- **Date range:** There are several preset relative date ranges in the pop-up menu. You can also set your own date range by choosing Custom from the pop-up menu, or by clicking on the calendar icon to the right of the pop-up.
- **Text search:** Find images that contain the entered text in the filename, metadata, keywords or description.
- **Filter Current Photos/Search Cataloged Folders:** This pop-up lets you apply the current search to either the current Browse view will apply the filter to all of your cataloged folders.



*In addition to the four preset styles at the top of the Advanced Search pane, others are accessible via the More pop-up.*

Choosing these any of these options will find photos based on all of the options chosen (i.e. 3 stars AND the Red color label). To filter with additional options, or to filter based on any criteria (i.e. 3 stars OR the Red color label), use the Advanced section at the bottom of the pane.

**TIP:** Entering text in the search box in the top of the Browse window will automatically turn on the Advanced Search pane, and enter that text in the pane's text field.

## Using advanced search options

The Advanced section at the bottom of the pane lets you add more discrete search options, choose multiple conditions to search upon, and set those options to filter on any or all of the criteria selected. Create an advanced filter by clicking on the Advanced triangle and choose either Match All Criteria or Match Any Criteria from the pop-up menu directly under the Advanced tab.

By default, the pop-up underneath the Match menu is set to Everything, with an empty text box to the right of the option. If you would like to narrow the filter to more precise metadata, click on the pop-up menu and choose one of the advanced options from the list. These options range from camera metadata

(Camera, Lens, Focal Length, Aperture, Shutter Speed, and ISO), to descriptive metadata (Keyword, Author, Description); to image-specific information (File Path, File Type, Orientation, Height in Pixels, Width in Pixels); to object type (Version, Original, Video). One other filter, Time of Day, lets you select images based on the time they were taken; you can choose Morning, Afternoon, Evening, or Night.

Once you've selected a filter, click on field to the right of the filter and enter (or select) the information upon which you wish to filter. Many of the advanced filtering options have pre-populated data taken from indexed metadata in your library, while others let you enter text into the selection field. (The Everything filter looks for text in all of the metadata associated with your photos.)

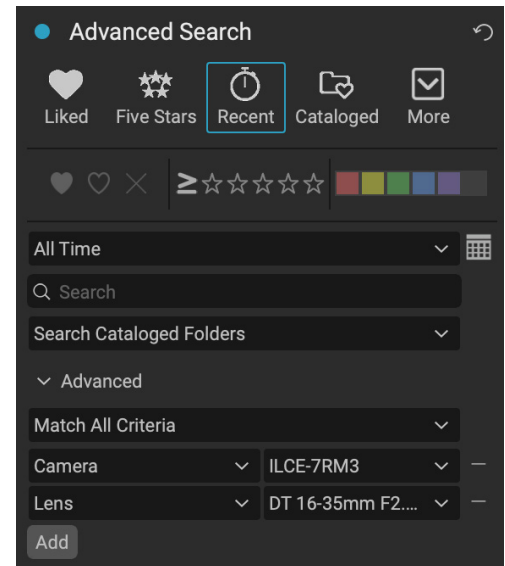
To choose additional filtering options, click on the Add button at the bottom of the Filter pane, and choose another criterion from the pop-up.

## Saving and modifying search results

If you find yourself using the same search operation over and over, you can save it as a style. Just create the filter and choose Save New Style from the More pop-up menu at the top of the pane and give the style a descriptive name. It will now appear at the bottom of the More menu. To delete a user style, choose Delete Style from the More pop-up and select the style you wish to remove. (You can only delete styles you have generated, not the default set installed with Resize.)

You can also update an existing style with changes made to the filter, whether it is one of the default filters or one of your own. To do this, select the desired filter in the pane, make the changes you wish, and select Update Style with Current Settings.

For example, you might want to change the Captured This Year filter to only filter on photos with 1 star or more. Choose the filter from the pop-up, then click on the 1-star icon, and update the style.

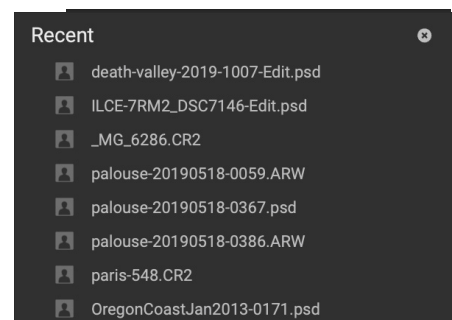


*The Advanced section in the search pane lets you choose from nearly every available type of metadata. Here, we want to find all cataloged photos created with a Sony A7RIII camera and a 16-35mm lens.*

## RECENT

The Recent pane keeps track of recently opened files or manually browsed folders. Files are listed in order of last opened. You can access your most recent files in this pane by clicking on the one you want and it will appear in your main preview window. The Recent pane only shows files you have opened from within Browse, not files you have opened as a plug-in from Lightroom or Photoshop.

You can clear the recent list by pressing the 'x' icon in the title bar.



# Working in the Preview Area

The Preview window is the largest part of the Browse workspace. Here, you can view folders of images in either thumbnail or detail view, based on the folders, albums or filters you have chosen via the Browse panel. There are five main views in the Preview window:

- **Grid**, which displays a grid of thumbnails of your images. This view also displays folders, letting you go up and down a folder hierarchy quickly. *Shortcut key: G*
- **Detail**, which you get by double-clicking on a thumbnail. You can view this image in either ‘fit to window’ view, or can zoom in to see more detail. *Shortcut key: E*
- **Filmstrip**, which displays a strip of images from a folder or album at the bottom of the screen. The currently selected image displays in the preview area above the strip; use the arrow keys to move through the folder, or click on an image in the filmstrip to view it in the preview area. *Shortcut key: F*
- **Compare**, which lets you view a group of photos in separate panes inside the preview area. You can zoom in on one or all of the selection, and lock the panning so that, as you move around one photo, the others move with it. Using Compare, you can quickly find the best images in a sequence, whether it be for composition, sharpness, facial expressions or more. *Shortcut key: C*
- **Map**, which can be used to display locations for photos that have GPS-based location data, or to search for locations that can then be applied to a photo or group of photos. *Shortcut key: M*

You can change the viewing mode between the different views by clicking on the view selector at the bottom of the window, or by using the keyboard shortcuts listed above.

## Fast Preview mode

Sometimes, when you get back to your computer after a shoot, you want to be able to go through a large number of photos quickly, looking for your best shots. ON1 Resize’s Fast Preview mode lets you do just that. Simply choose Fast from the RAW Previews pop-up at the bottom of the Browse window, and you can jump from photo to photo quickly with minimal lag between shots.

If you are more concerned about color accuracy than speedy previews, select Accurate from the RAW Previews pop-up. ON1 Resize will generate a full-resolution preview of your photo, using the photo’s embedded color profile. This will take a few seconds, depending upon the size of the raw file you’re working with, but you will get a better sense of the actual color in the photo.

## Persistent Thumbnail Cache

When you go through a folder of photos, Browse caches thumbnails and preview images as well as extracted metadata. This will make it faster the second time a user browses a folder. It also stores user-added or adjusted metadata such as ratings, labels, keywords, captions, rotation and GPS data, among others.

You can adjust the size of the cache and change the storage location of the cache in the System tab in ON1 Resize 2020’s Preferences window ([page 82](#)).

## FOCUS AND CLIPPING VIEWS

When you're viewing photos with an eye toward selecting the best images in a group for editing, you generally want to look at issues with both exposure and sharpness. To help you with this, Resize offers two viewing aids that are available in Browse: Clipping and Focus Mask overlays. You can display these overlays in Detail, Filmstrip and Compare modes.

### Clipping

Clipping occurs when the shadow and highlight tones in an image are suddenly cut off to completely white or black, rather than fading smoothly. (Large expanses of white pixels in a photo are often referred to as 'blown' highlights, and can be quite distracting to a viewer.) One of the benefits of shooting in raw format is that, while many photos will have areas of pure white or black when originally viewed on-screen, there is still recoverable data in the raw image. The Clipping overlay can help determine how big a problem you might have with a photo, and how easy (or difficult) it will be to fix.

To display the Clipping overlay temporarily, press the J key; to turn it on permanently as you move from photo to photo, choose View > Show Clipping, or press Alt (Windows) or Option (Mac) J on your keyboard.



*Clipping view displays pure white pixels with a bright red overlay, and pure black pixels with a bright blue overlay.*

The Clipping view overlay displays the areas that have either pure white or pure black in them. Those areas with a bright blue overlay indicate pure black pixels, while the areas with the bright red overlay indicate pure white pixels.

Clipping view is also available in the Resize module.

### Focus Mask

It can often be difficult to view the sharpness in a photo without zooming in to 100% or more, and if you have a lot of photos from a shoot, it can be a bit tedious to check focus at that level. Luckily, Resize's Focus Mask overlay can help winnow your shots down to the sharpest ones.

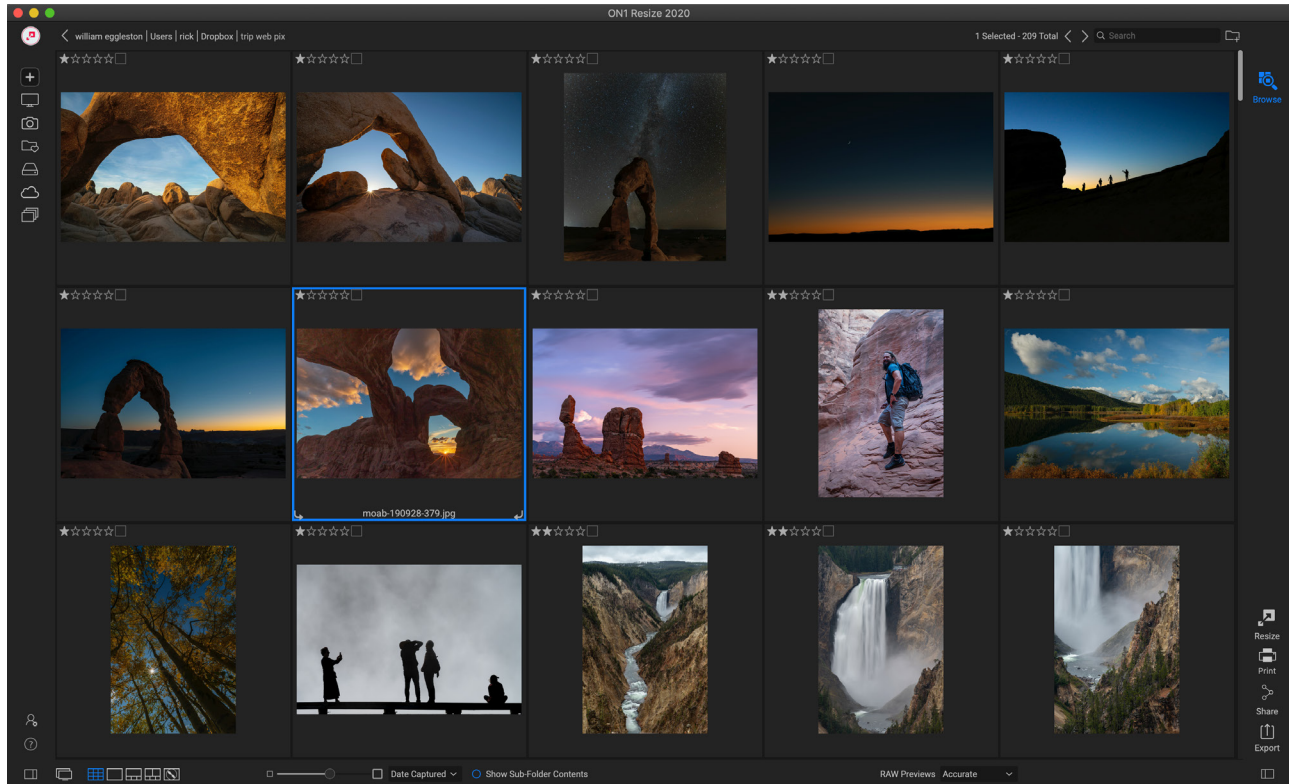
To turn on Focus Mask, choose View > Show Focus Mask, or press Shift-Alt/Option J. The sharpest areas in your image will be represented by a bright green overlay. As you move from photo to photo in a folder, you'll be able to tell whether you have an acceptable level of sharpness where you need it by the strength of the overlay. The mask will continue to be displayed even as you zoom in on a photo.



*The Focus Mask option displays areas of sharpness with a bright green overlay.*



## GRID VIEW



Grid view displays thumbnails of folders and images you have selected using the Folder or Albums panes. There are many operations you can perform from inside Grid view, including:

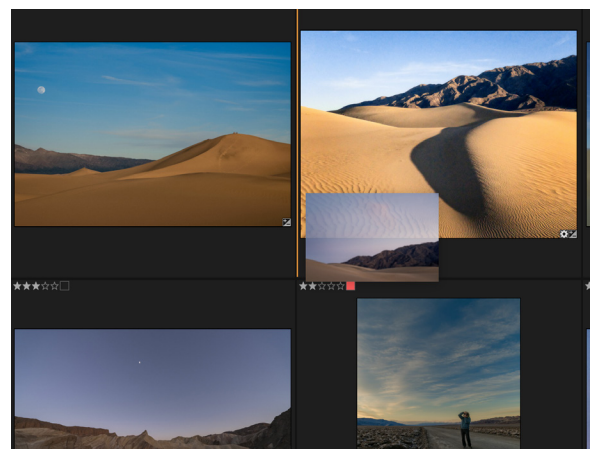
- Use the breadcrumbs to navigate (the '<' button goes up one folder).
- Select your image while in Grid view and open the photo in Resize.
- Adjust thumbnail size using the on-screen slider or use “-/ +” keys on your keyboard.
- Check Show Sub-Folder Contents when you want to view the contents of all sub-folders (this only works when you are viewing cataloged folders).

### Sorting photos in Grid view

When working in Grid view, you can sort the thumbnails in a number of different ways by choosing the Sort By pop-up at the bottom of the window. The sorting options include: date captured or modified; color label; file name, type, or size; and rating.

You can also create a custom sort order by dragging thumbnails inside the grid window; click and drag the thumbnail so that the outline sits between two images.

Once you change the order of images, the Sort pop-up changes to Custom, and Resize will remember the sort order for that folder until you change it. (Custom sorting also works when viewing albums.)



*To reorder a photo in Grid view, drag it between the two photos where you want it to be placed.*

At the bottom of the Sort pop-up are settings for sorting the view in ascending or descending order; selecting one of the options will rearrange the view accordingly. If you have a custom sort order, choosing these options will change the view in the opposite order.

## DETAIL VIEW



*In Detail view, you can zoom to 100% to check small details and sharpness in a photo, view its histogram, and even apply a preset, all without having to leave Browse.*

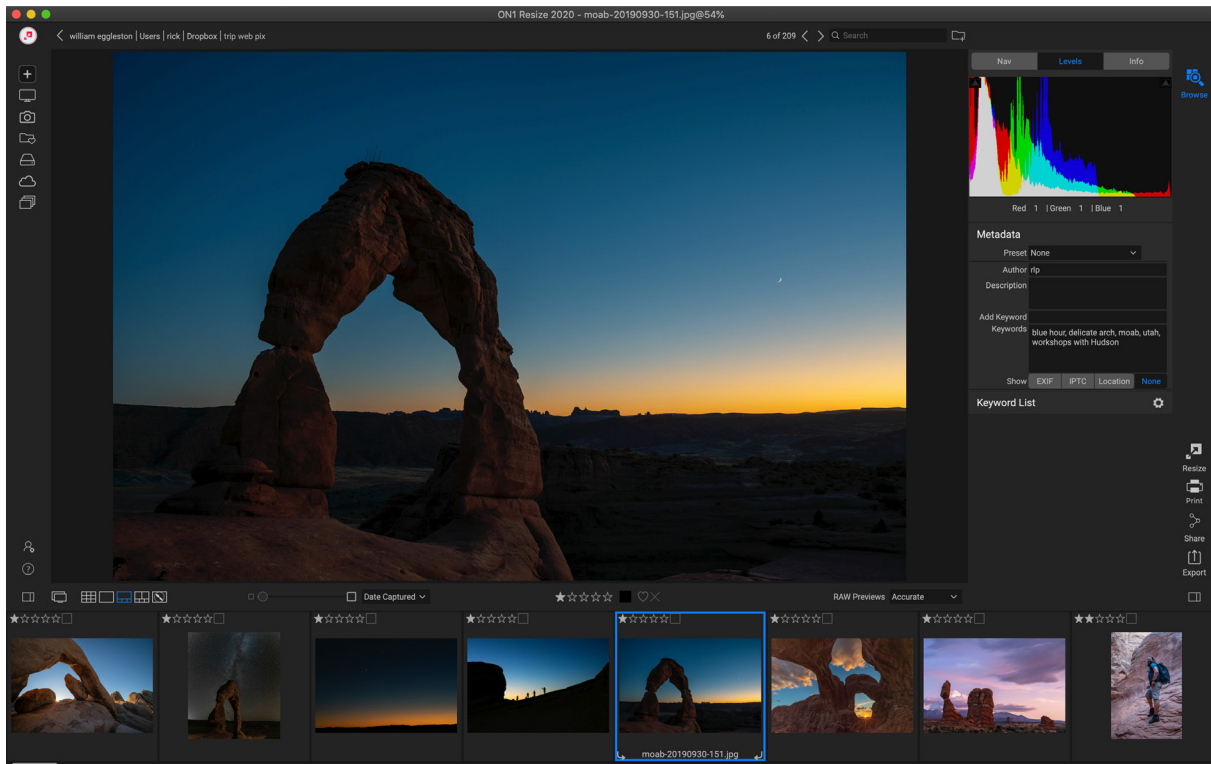
In Detail view you get a full-screen version of your photo. When you go to Detail view, your images will be displayed in Fit mode, showing the entire image. You can click on the image to zoom in to 100%. This is useful for judging small details and sharpness. Single-clicking on a image that is magnified will return back to Fit mode. You can click and drag a magnified image to look around. Your zoom mode is maintained as you move from image to image so you can compare the same spot in several frames.

In the Navigator pane you can reposition the preview and change the magnification amount. (You can also view and adjust the rating and flag labels for the current image.)

When working in Detail view, you can move to the next image by using the arrow keys on your keyboard.



## FILMSTRIP VIEW



Filmstrip view is similar to Detail view, but displays a strip of photos from the current folder (or album). You can easily move to another photo by using the right and left arrow keys, or by scrolling and clicking with your mouse.

Filmstrip view presents a large version of your current image in the preview area, displaying other photos from the current view in a strip of thumbnails at the bottom of the screen. The photos are sorted by the current sort order, which can be changed via the Sort pop-up above the strip.

The current image is represented by a blue rectangle in the filmstrip, and you can use the arrow keys to move from photo to photo, or you can scroll with your mouse and click on a photo to display it in the preview. (You can also rate and flag images inside this view.)

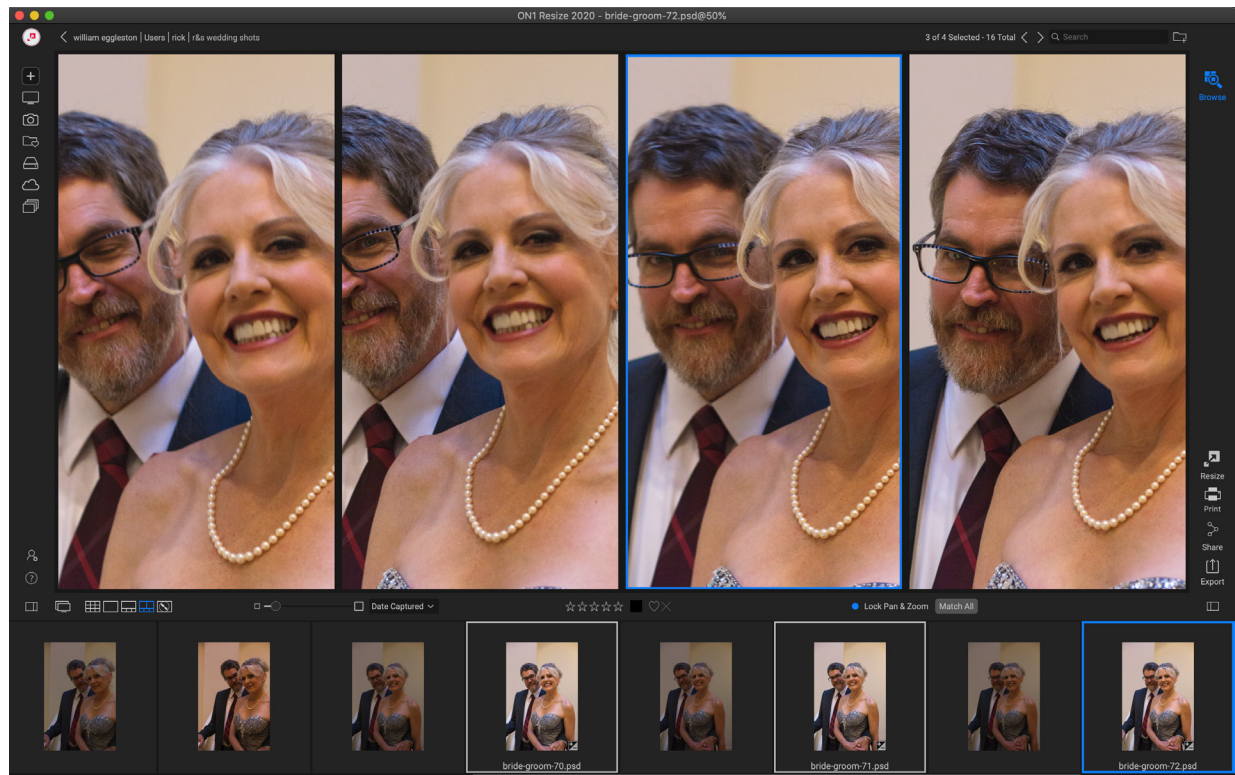
## COMPARE VIEW

Compare mode is for those times when you shoot a sequence of photos of the same type of scene—a portrait session, a wedding, a landscape series, for example—and wish to narrow that group down to find your best ones. With Compare, you can select a group of photos, view them side-by-side to check composition, zoom in simultaneously to check focus, and rate your favorites and remove the rejects.

To use Compare mode, you can choose one of two methods:

- Select a group of images you wish to compare in either Grid or Filmstrip view. To select a group of contiguous photos (ones next to each other in order), simply click on the first one you wish to compare, then hold down the Shift key and click on the last photo. If you want to add noncontiguous photos, click on the first photo, then use the Command (Mac) or Control (Windows) key and click on each subsequent photo you wish to compare. When you have your selected photos, press the C key, or click on the Compare icon in the View Selector at the bottom left of the Browse window.

- You can also select photos directly in Compare mode: press the C key or click on the Compare icon in the View Selector at the bottom left of the Browse window. In the strip at the bottom of the window, you can select the photos in the same manner as the first option, by clicking on the first photo in a sequence, and Shift-clicking on the last, or by using the Command (Mac) or Control (Windows) key to select noncontiguous photos from a group.



*Compare mode displays selected photos as panes inside the preview area. The photo highlighted with a blue box is the current selection. Clicking in that pane will zoom the photo; if the Lock pan/zoom box is checked (above the filmstrip), then all of the compared photos will zoom with it.*

When you enter Compare, you will see your selected photos in a grid in the Preview area, fit to show the entire photo. The currently selected photo will have a blue box around it, while the other items in the selection will have a light gray box around them. You can switch the primary selection by using the arrow keys on your keyboard, or by clicking inside the pane you wish to make primary.

If you click once inside the current selection, the photo will zoom in to show greater detail; if you click and hold the mouse button down, you can pan across or down your photo, so you can check for things like detail, sharpness or facial expressions. (Clicking a second time inside the pane will reduce the photo to fit all of it in the pane.)

To see the detail across the group of selected photos, click on the Lock pan/zoom dot above the filmstrip. Now, when you click on an area inside the primary photo, all of the photos will zoom simultaneously to the same location of your click. And, if you click and drag inside the primary photo, all of the selected photos will pan along with the primary. To pan one photo—which can be useful if the field of view was different than the rest—click on that photo to make it the primary selection, then hold down the Shift key and click and drag inside that pane. If you do this and wish to get back to the original zoom position, click on the Sync button next to the Lock pan/zoom setting, and it will reset the zoom view to the same place in each compared photo.

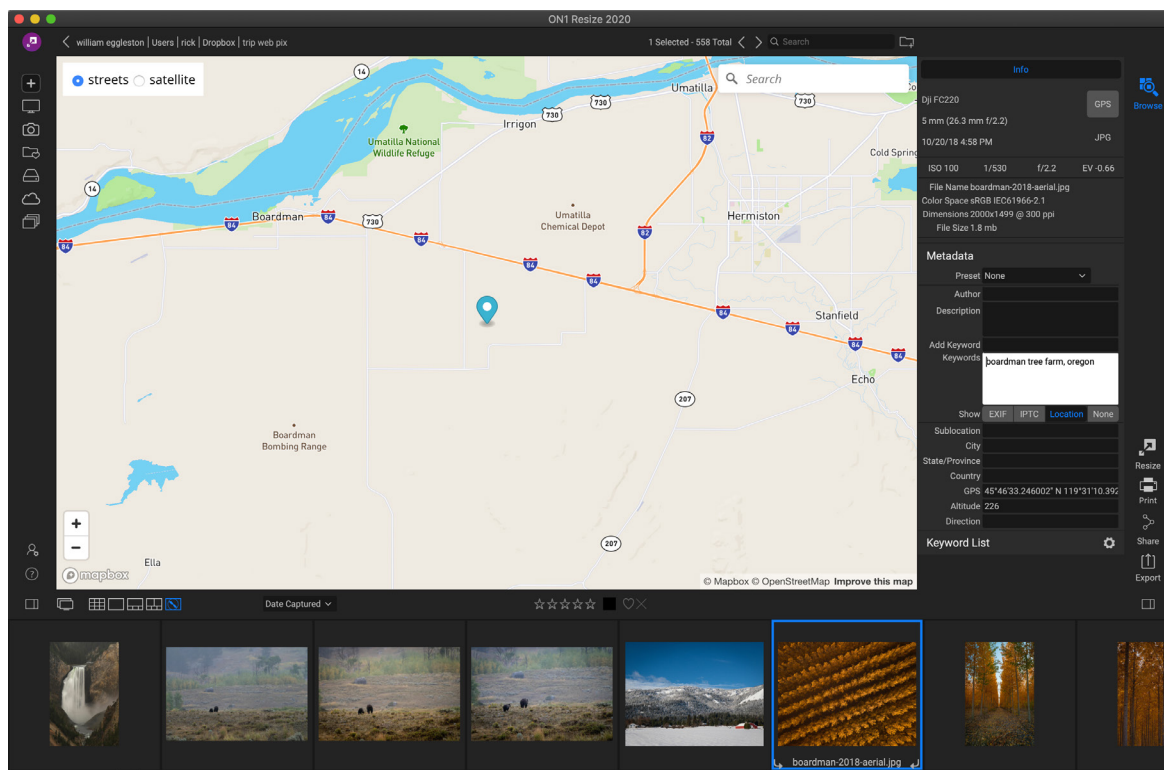
Use the spacebar if at you want to zoom between fit and 100% on the selected photo in the grid. Toggling the spacebar between views does not “lock” and will not sync with other photos even if Lock is turned on.

If you wish to remove a photo from the group, select it (by clicking on it or by pressing the left or right arrow keys) and press the / (slash) key on your keyboard. The photo will be removed from the Compare window, and the remaining photos will resize to best fill the available space in the window. (You can also add additional photos to the Compare window by using the selection techniques mentioned above.)

When using Compare, you can rate or flag a photo, apply a preset and add other metadata. These functions will only be applied to the primary selected photo (outlined in blue). There are two exceptions:

- Using the Sync settings button on the far right side of the Browse window, underneath the Info pane. Clicking on that will sync all of the Edit settings between the primary selection and all of the items being compared.
- Using the Create Album or Add to Album commands from the Albums menu: this adds all of the currently selected photos to either the new album (when you check the Add Selected Items button) or to the chosen album. This feature can be helpful when you have a group of images that you would like to keep for a client or to further segment a series.

## MAP VIEW



Resize's Map view provides a simple mechanism to add GPS information to a photo, by searching for a place on a web-based map, or to view the location of a photo that already has location information embedded in its metadata. An internet connection is required to add or view map data.

The Map display has three controls: the buttons in the upper left corner of the map, to switch between Street and Satellite views; a search area, which lets you look for a place (cities, counties, roads); and the controls on the lower left, which let you zoom in or out of the current map view. To move around the current view, click and drag inside the window. The filmstrip at the bottom of the window displays other photos in the current folder. To move between photos you can use the left and right arrow keys, or you can use the mouse to select a new photo.

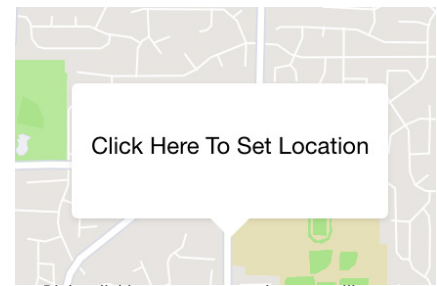
To view the location of any GPS-tagged photo on a map, select the photo and click on the Map view icon at the bottom of the main Browse window.

To add GPS data to a photo, select a photo or group of photos and click on the Map view icon at the bottom of the screen. There you can search for a location via the search bar. Once you have the desired area, right-click on the map to add a location for the photo (or photos) in that spot. If the position is correct, click inside the pop-up box to set the pin.

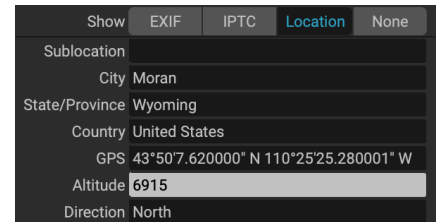
If you would like to choose a different point instead, right-click in another location.

Once added, Resize will enter that position in the GPS field of the Metadata panel.

Resize can also look up standard location information — city, state, country — from the GPS coordinates in a photo, and populate that information in the Location tab of the Metadata pane. To do this, click on the photos you wish to update and choose Set Location from GPS Coordinates from the Photo menu. (See “Metadata Pane” on page 33 for more information.)



*Right-clicking on a spot on the map will generate this pop-up. To confirm the location, click in the box; otherwise, right-click elsewhere to choose a different map location.*



*Resize can automatically add standard location information, such as city, state, and country, to any photo that has GPS data. Choose Set Location from GPS Coordinates from the Photo menu in Browse..*

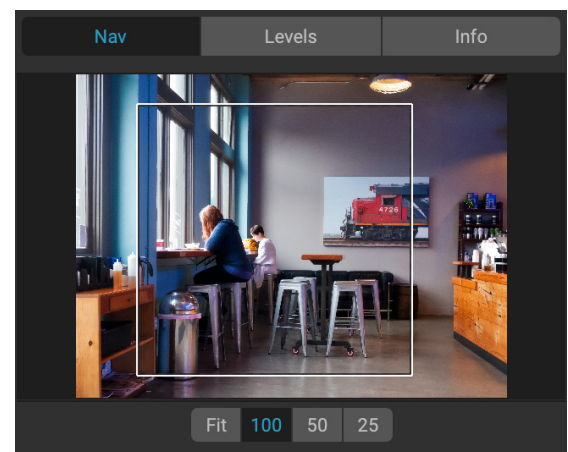
## The Photo Panel

The panel on the right side of the screen contains information relative to the currently selected image in the Preview area, and includes three sections: Nav, Levels, and Info.

### THE NAVIGATOR PANE (DETAIL AND FILMSTRIP VIEWS ONLY)

This pane presents a thumbnail view of the current image. The white square region marks the image area that is visible in the preview pane. You can pan your image by clicking and dragging inside the square.

At the bottom of the Navigator pane are several zoom buttons representing percentage zoom views (100%, 50% and 25%). Click on one of the buttons to change the view. Fit zooms to fit the current canvas size, while 100 zooms to 100%, displaying the actual pixels.



*The Navigator pane.*

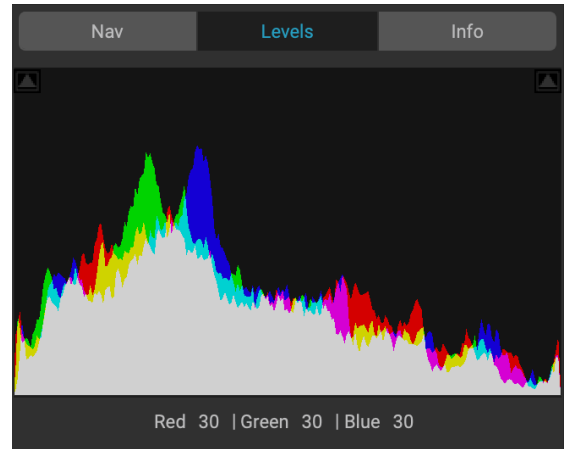


## THE LEVELS PANE (DETAIL AND FILMSTRIP VIEWS ONLY)

This pane gives you a color chart of the shadow, midtone and highlight areas based on an image's RGB values (commonly known as a histogram). This is useful to show areas within the image that may be clipping. Clipping is when your image contains pure blacks or white and can signify loss of highlight or shadow detail.

The left side of the histogram represents the shadows, while the right represents the highlights. At the top of each end is a triangle. If the triangle is lit, there is clipping on that side of the histogram. If you click on the arrows, you will activate the clipping overlay on your image, which displays the areas that are clipped. Those areas with a blue overlay are pure black, while the areas with the red overlay are pure white. You can turn the clipping view off again by clicking on one of the triangles. You can also temporarily enable clipping view by holding down the J key at any time. (Clipping can be turned on or off permanently by pressing Alt (Windows) or Option (Mac) and the J key.) The clipping view is useful when you are making adjustments to the brightness and contrast of your image.

The Levels pane also displays the RGB values under the cursor at the bottom of the pane.



The Levels pane.

## INFO PANE (ALL VIEWS)

The Info pane displays common metadata and other information for the currently selected image in a large, easy-to-read format. This metadata includes:

- Camera make and model
- Lens focal length
- Capture date and time
- File type
- GPS
- ISO
- Shutter speed
- Aperture
- Exposure compensation
- Filename
- Color space
- Image dimensions and resolution
- File size

Info			
Sony ILCE-7RM3			
55 mm (DT 24-70mm F2.8 SAM)			
9/30/19 5:23 PM			RAW
ISO 1000	1/60	f/6.3	EV -2
File Name moab-20190930-166.arw			
Color Space Adobe RGB (1998)			
Dimensions 7952x5304 @ 350 ppi			
File Size 81.4 mb			

If any of the metadata fields are unavailable they will be left blank.

## GPS Metadata

If your image has GPS metadata embedded in it, the GPS button will appear in the Info pane. Clicking on this button will open your default web browser to Google Maps to the location where the image was taken.

## METADATA PANE

The Metadata pane displays more complete metadata about a photo than the Info pane, and lets you add your own metadata elements, such as author, copyright, contact information, keywords and photo descriptions.

In addition, at the bottom of the Metadata pane are three labels/tabs for viewing or adding specific types of information to your photos:

- **EXIF** (Exchangeable Image File Format) displays all of the data embedded by your camera. Depending upon the camera, some of all of this information will be displayed, and many of the fields are editable.
- **IPTC** (International Press Telecommunications Council) is an industry-standard metadata format, and offers much more detailed metadata information than EXIF. It historically has been used by journalists and stock photographers to catalog and tag photos, as well as add copyright information, captions, and other data.
- **Location** includes GPS information, as well as country, state/province and city information. Resize can automatically look up this information for any photo that has GPS coordinates, via the Set Location from GPS Coordinates item in the Photo menu.

Metadata	
Preset	2020 copyright info*
Author	rip
Description	owens valley
Add Keyword	
Keywords	desert spring 2019, eastern california, Escape travels, our travels, Owens Valley
Show	EXIF IPTC Location None
File Name	owens-valley-2019-339-Edit.psd
Dimensions	2981x3975 @ 300 ppi
Capture Date	2/23/19 4:31 PM
User Comment	
GPS	37°10'24.899998" N 118°17'23.628044" W
Exposure	1/230 sec @ f/2.4
ISO	16
Exposure Bias	EV 0
Focal Length	6 mm
Model	iPhone X
Lens	Apple iPhone X back camera 6mm f/2.4
Exposure Prog.	
Flash Mode	Auto, Did not fire
Metering Mode	Spot
White Balance	Auto
Focus Distance	

To go back and forth between the EXIF, IPTC and Location fields in the Metadata pane, click on the label.

When you enter text into any field in the Metadata pane, Resize will add that information to the currently selected image. You can change the metadata in multiple images at the same time by selecting them all, then changing any of the fields in the pane.

## Metadata templates

With ON1 Resize, you can create metadata templates that apply common information to your images, data such as copyright, author, contact information, your website and more. These preset templates can be accessed in the Metadata pane.

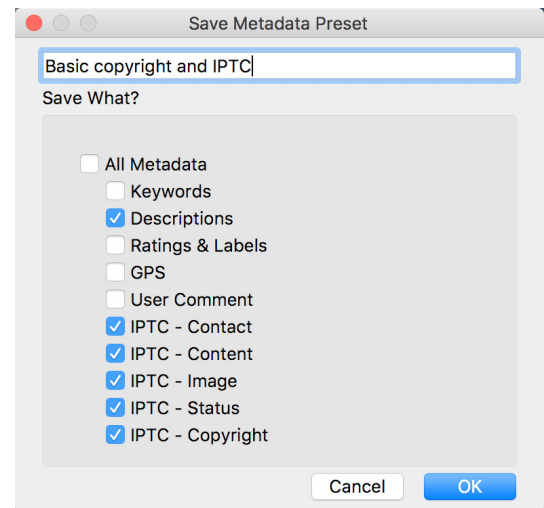
Saving a metadata template is easy: you can either go to an image that has the basic metadata items you wish to use, or you can select an image without metadata and add your common items to the Metadata pane. Once you have the metadata set, click on the Preset drop-down menu at the top of the pane and choose Save New Preset. The Save Preset dialog will appear on-screen, and you can choose which

metadata fields you wish to save as part of the template. For example, while you might wish to save the copyright and contact information as part of your preset, you might not want to apply keyword, GPS or description data to a group of images.

You can update a metadata template by selecting the preset in the pane, then changing the appropriate fields as desired, and then choosing Update Preset with Current Settings from the Preset drop-down. To delete a metadata preset, first choose the preset from the drop-down menu, then choose Delete Preset from the menu.

## Embedding Metadata

Metadata you add in Browse is stored in industry-standard XMP sidecar files for raw files. This facilitates the transfer of metadata to any application that supports XMP. When you edit an image, create a copy of an image for editing or use the 'Send to' command, the metadata is embedded into the file automatically (with the exception of raw files). You can manually embed your metadata into images using the Embed Metadata command from the Photos menu. This will open each image you have selected, update the metadata and re-save it. This is supported for TIF, PSD, PSB and JPG files; raw and PNG files do not support direct embedding of metadata.



The Save Metadata Preset dialog lets you choose which metadata fields get saved to a preset from the currently selected image.

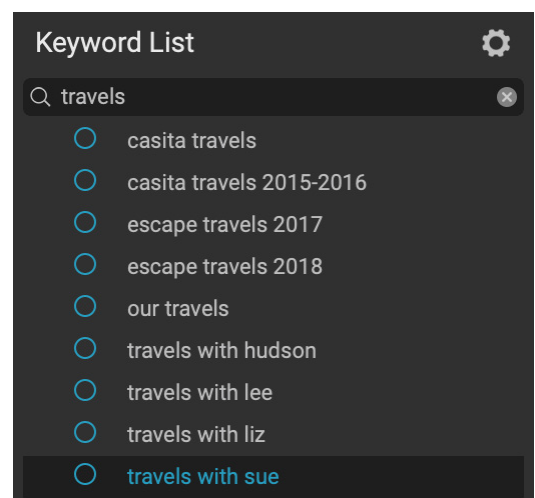
## Reading Metadata

Sometimes, when you've been sharing raw images across machines or with others, the metadata information might get 'lost,' or is different than your original metadata. In these instances, choose Read Metadata from the Photo menu, which will grab the metadata from the file or the XMP file (for raw files).

## KEYWORD LIST PANE

As you add cataloged folders or browse through folders of non-cataloged photos inside ON1 Resize 2020, any keywords you have added—to any photo—are stored in an internal database. That list of keywords is visible in the Keyword List pane, and from there, you can search for established keywords and display those photos from your cataloged folders, manage the keyword list, and apply keywords to new images. And, to help manage your keywords, Resize 2020 will also let you create subcategories of keywords (see [“Using hierarchical keywords with Resize” on page 35](#)).

If you double-click on a keyword in the list, Resize will search your cataloged folders for that keyword, and display the results in the Preview window. In this search, Resize is actually performing a search in the Advanced Search pane, so you can refine your search there, if you wish to add additional filter criteria. (If you would like to search the current folder only, choose the Filter Current Photos option in the Advanced Search pane.)





You can assign keywords to an image in any of Browse's views. Click on the button to the left of a keyword, and Resize will apply that keyword to the currently selected image or images.

Right-clicking on a keyword gives you a pop-up menu with a list of options you can perform:

- **Assign Keyword to Selected Photos:** adds that keyword to the current selection.
- **Remove Keyword from Selected Photos:** removes that keyword from the selection
- **Add Keyword:** Lets you create a new keyword, with the option to save that keyword as a subcategory of the currently selected keyword.
- **Edit Keyword:** lets you rename the selected keyword, and applies the new keyword to all of the cataloged and known photos that used it.
- **Delete Keyword:** Removes that keyword from the cataloged and known photos that use it.
- **Find Cataloged Photos with Keyword:** Displays (in grid view) all of the photos in your cataloged folders that use the selected keyword.

## Refining the Keyword List

Because the list of keywords can be extremely long, you can use the pane's search field to look for keywords: as you start to type in the field, Resize will display a list of keywords that contain the letters you've typed. Once you've narrowed your search, you can select a keyword from the list (shown, right), and perform any keyword operations detailed in the previous section.

## Using hierarchical keywords with Resize

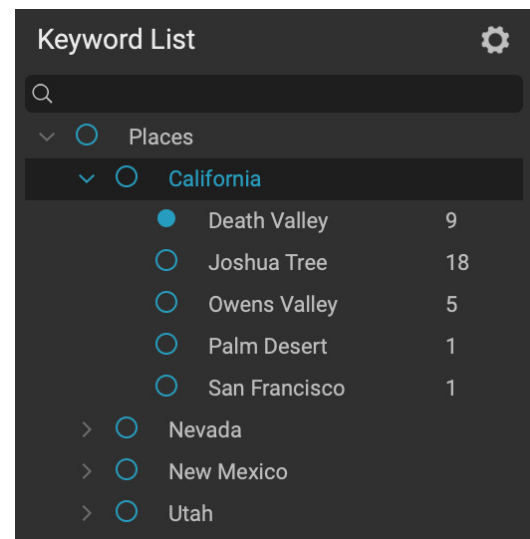
In addition to standard keywords, ON1 Resize 2020 also supports the creation and use of hierarchical keywords. This option lets you "nest" keywords within a top-level keyword, which can be helpful to manage and categorize keywords.

For example, you might want to use a master keyword for states that you've visited—"California," "Nevada," "Oregon," etc.—and use sub-keywords for places within the state, like "Death Valley," "Joshua Tree", "Valley of Fire" and others.

Hierarchical keywords are displayed in the Keyword pane with a small right arrow to the left of the top-level keyword. Clicking on the arrow will display the sub-keywords for that master, with the number of images with that keyword on the right side. As is the case with standard (i.e. non-hierarchical) keywords, you can double-click on any of the nested keywords to show all of the photos in your cataloged folders that use that keyword.

To create a keyword hierarchy, first create your master keyword by clicking on the gear icon at the top of the Keyword List pane and choosing Add Keyword. Enter the name of the top-level keyword and click Apply. (If you have photos selected, and don't want to add the new keyword to those images, uncheck the "Add to Selected" box before clicking Apply.)

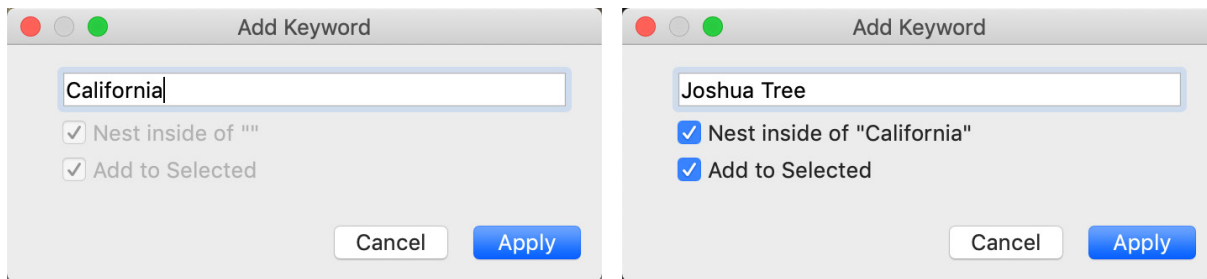
To create a new nested keyword, right-click on the master keyword and choose Add Keyword from the pop-up. The dialog box should now give you a check box to nest the new keyword inside the top-level



*Hierarchical keywords can help with keyword management, and are extremely useful when you wish to use primary and secondary categories for such image categories as locations, people, types of shoots, and so on.*

keyword, as well as to add the new keyword to any selected photos.

If you wish to create new hierarchies from existing keywords, it is best to first create your master keyword, as shown on the right, and then drag any existing keywords onto that master.

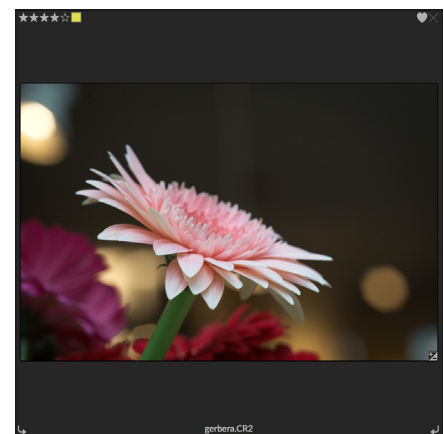


To create a hierarchical keyword set, create the top-level keyword by choosing Add Keyword from the Keyword List pop-up. Then, right-click the top-level keyword and choose Add Keyword. There, you will have the option to nest the new keyword inside the top-level keyword.

## Culling Photos in Browse

Using a standard rating and label system, it is easy to sort and cull your favorites from the throw-away shots. Browse offers three ways, aside from keywords and subfolders, to mark and group similar images. All of these methods may be set several ways: from the Photo menu, the right-click contextual menu, clicking the badges on the image thumbnail or in the footer of Image view. There are also keyboard shortcuts associated with each classification option.

- **Star ratings:** Set from zero to five stars. Photographers often use five stars for their favorite images and one star for images they don't want to keep, but you can use this system in whatever way works best for you. You can adjust the rating using the 1 through 5 keys on the keyboard. You can also clear the stars on any image with the ` (backquote or grave) key.
- **Color labels:** There are five color labels as well. Color labels are a great way to mark sub-sets of images for special handling. You can set the color ratings by pressing the following keys: 6 (red), 7 (yellow), 8 (blue), 9 (green), 0 (purple).
- **Likes:** A common need for photographers is to mark their favorite images and the ones they want to delete. This is best accomplished with the Like classification. There are three options: Like (icon with a filled-in heart), Dislike ('X' icon) and Not Set (empty heart). By default, images are in the Not Set category until you change them. You can set your Liked images with the P keyboard shortcut, Dislikes with the X key, and clear settings with the U key.



An example of a photo in Grid view with a ratings, color and favorite attached.

Both star ratings and color labels are industry standards. When you use these tools, the settings are stored in the metadata and will be available in other photo editors and managers, like Lightroom. (Likes are proprietary and will only appear in ON1 Resize 2020.)

## USE AUTO ADVANCE WHEN CULLING YOUR PHOTOS

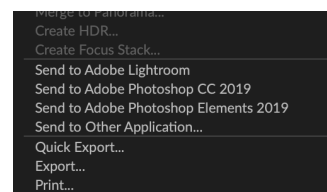
ON1 Resize's Auto Advance feature was designed to help you rank a group of images quickly: with Auto Advance turned on, when you apply a rating, color label or flag to an current image, Resize will make the change and automatically move to the next image.

Auto Advance can be turned on or off via the Photo menu.

## Sending images to another application for editing

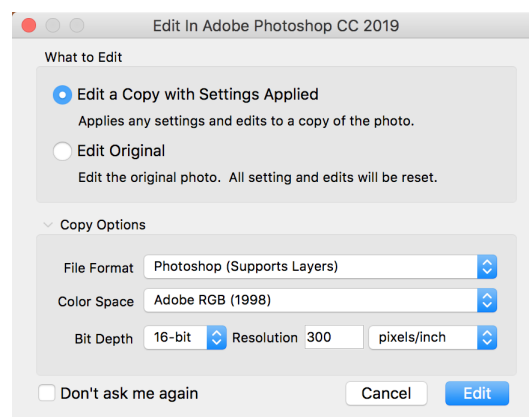
Browse lets you send images you are viewing to other applications for editing. This is done via the Send to option, which is available from the right-click contextual menu or the Edit menu. Browse detects the following common photo managers or editors and lists the latest installed version:

- Adobe Photoshop
- Adobe Photoshop Lightroom
- Adobe Photoshop Elements



You can set up any application you want to send your photos to. Simply select the Send to Other Application option. Then select the application you want to send your photos to. The application will be remembered and listed with your other Send to options. (For example, if you use an email client you can add it to easily email photos.)

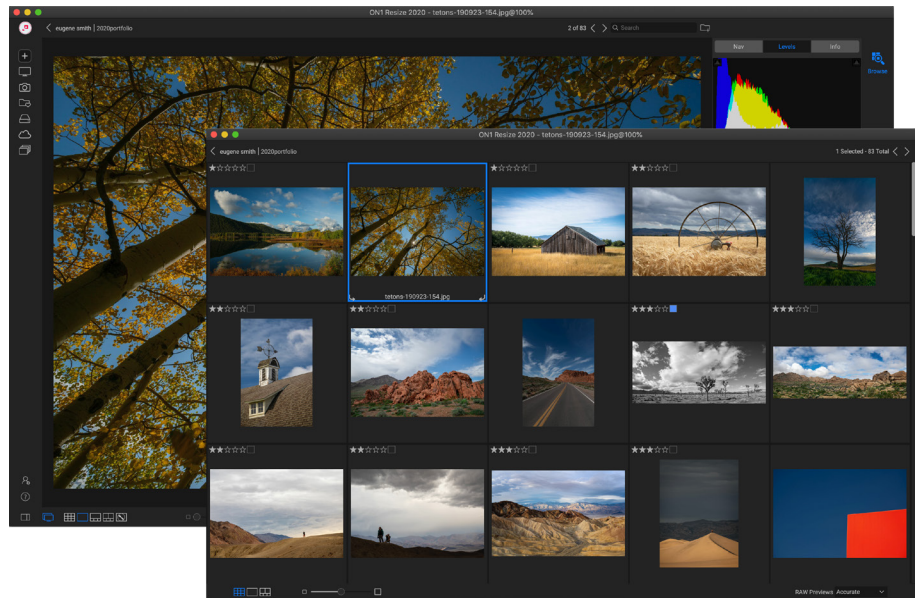
When you send an image to another application, you will be presented with the Edit in dialog box from ON1 Resize 2020. There you'll have the option to send either the edited photo or the original, unedited image. If you choose to send a copy, you'll have options for choosing the file type, color space, bit depth and resolution. If you use the same set of options every time, you can check the "Don't ask me again" box in the window, and you won't be prompted again. (To change this setting, go to the Files tab in Resize's Preferences.)



*The Edit In dialog, with the Copy Options section expanded.*

# Using ON1 Resize 2020 with two displays

You can use Resize's Dual Mode feature—which is available only in the Browse module—to display a second copy of your photos in an added browser-style window. Here, you can view folders of images as thumbnails, and navigate through them, while displaying the full-size images in the primary window. This can help your productivity when you have an additional monitor connected to your computer, reducing the need to switch between Grid and Detail, Filmstrip or Compare view. It can also be useful when you wish to present photos on a projector or TV, and don't want to display the entire Resize application window.



*Resize's Dual Mode lets you open a new browser-style window, which can be placed on a second display, or be used to present on a TV or projector.*

You can choose how you wish the second window to act, either displaying in Grid view, with the primary window working in the three other view modes (Detail, Filmstrip or Compare), or vice versa. As you navigate images in the Grid, the other window will display the currently selected image.

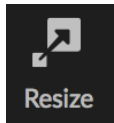
## TURNING DUAL MODE ON

To use this feature, choose Dual Mode > Show from the Window menu, or click the Dual Mode icon at the bottom left of the main window. The first time you use Dual Mode, the second window will open on your primary display. Simply drag the window to your secondary display, and from that point on, Resize will remember the location of the second window. (When the window is placed in the second display, you can choose Dual Mode > Full Screen Mode from the window menu to have the window fill the entire screen.)

The icons at the bottom of the secondary window are a subset of the main Resize application window: in Browse, you will see options for Grid, Detail and Compare views; in Edit, only the Grid view icon will be visible. The Size slider can change the size of thumbnails (in Grid view) or the zoom level (in Detail and Compare view).

**NOTE:** If you are working in Dual Mode and click on the Resize button in the module selector, Resize will close the second window.

# PART 3: USING ON1 RESIZE 2020



ON1 Resize lets you get the highest quality enlargements of your photos, using the patented, industry-standard Genuine Fractals algorithms to enlarge photos without the loss of sharpness or detail. It includes the following features:

- Complete control over adjustment size and resolution
- Crop and level
- Sharpening
- Multiple resize algorithms let you get the highest quality results with any subject matter
- Add film grain
- Crop to common preset sizes for different paper and screen sizes
- Add gallery wrap wings for printing on canvas
- Divide an image into tiles for printing mosaics or murals
- Crop, resize, and print all in one place without having to create a new file
- Hundreds of presets to create the desired size print and adjust options for your printer and paper combination

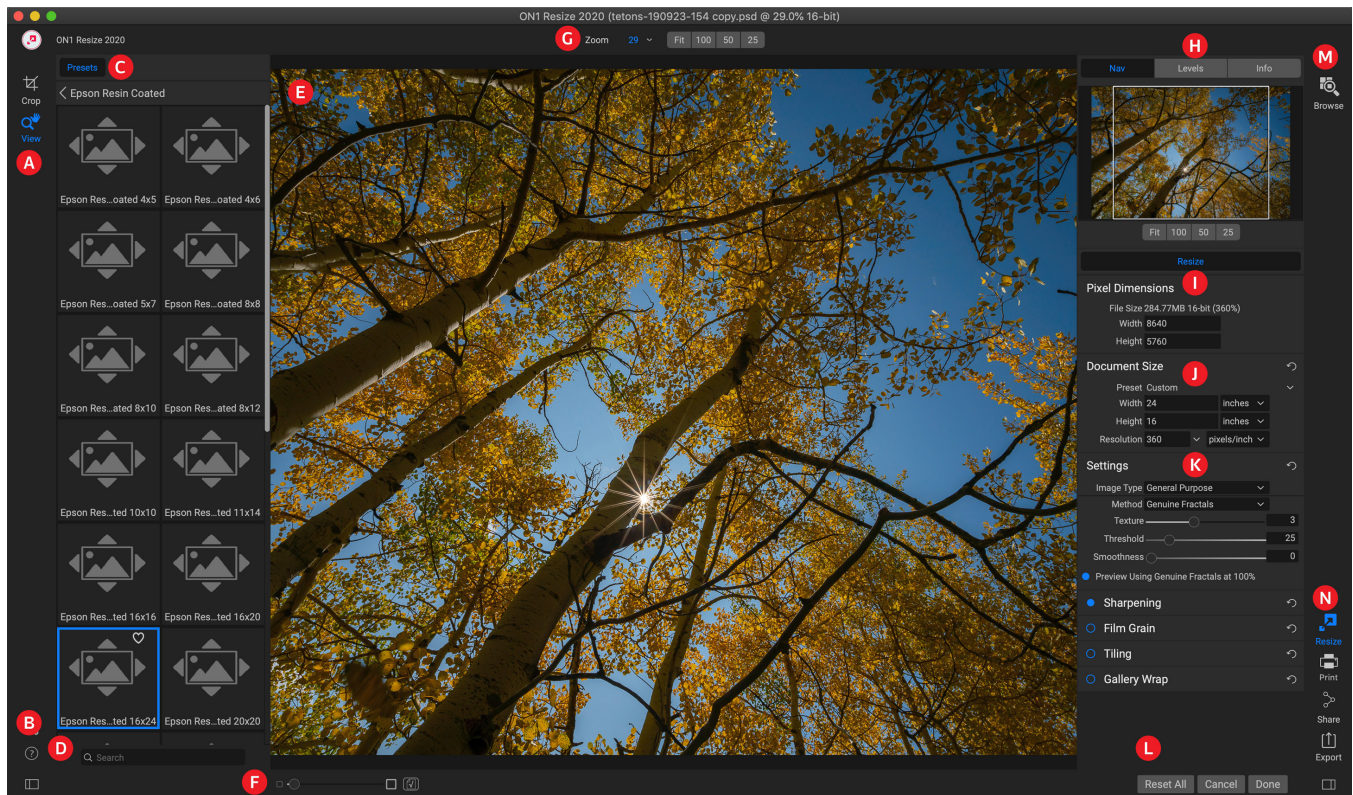
## When Should I Use ON1 Resize?

ON1 Resize should be used as one of the last steps in your workflow before printing. The power of ON1 Resize is in the concept of resolution on demand. You can work with a modest size file, which makes your editing faster and takes less hard drive space and memory. Then when you are ready to output your file, enlarge it with ON1 Resize to the desired size and sharpen it for output. This means you don't have to keep multiple versions of a file at different print sizes; you just create what you need on the fly. ON1 Resize also supports layered Photoshop files so you can maintain all your layers in the entire process.

**NOTE:** A much fuller discussion of resolution and print size can be found in the "How Big Can I Print?" and "How Much Resolution Do I Need?" sections, starting on [page 53](#).



# ON1 Resize Main Screen Overview



ON1 Resize provides you with an easy-to-use work area for editing your photos. Below is an overview of the main sections, including:

- A. **Tool Well:** This is where the tools are located.
- B. **Settings/Help:** This is where you can access preferences and help. The button at the bottom shows/hides the Presets pane.
- C. **Presets:** Contains a library of presets for different printers, paper types and print sizes.
- D. **Search:** Search for presets by name.
- E. **Preview Window:** Preview of images to be resized.
- F. **Zoom view/Soft Proofing:** The slider sets the zoom level; the icon turns soft proofing on or off.
- G. **Tool Options bar:** Lists options for the currently selected tool.
- H. **Navigator/Levels/Info Pane:** Navigator, levels (histogram) and general photo information.
- I. **Pixel Dimensions:** Displays the pixel dimensions of your image.
- J. **Document Size:** This is where you set the size of your resized photo.
- K. **Control Panes:** Access image settings, sharpening, film grain, tiling and gallery wrap options.
- L. **Reset All/Cancel/Done:** Reset the current settings, cancel (and return to Browse or external application without saving) and save and close your image with the current settings.
- M. **Module Selector:** Takes you to Browse.
- N. **Export/Share Buttons:** Export or share your image (separately from Resize).

# Navigating the Preview Area

The Preview area is the main section where you preview and work on images. You can use the View tool for navigating this window.

This tool, which is the default tool selected when you open an image in the Resize module, adjusts the magnification of the image in the Preview window. With the Zoom tool selected, click in the Preview window to zoom in and center the image at the location clicked.

Hold down the Option/Alt key to pan around the magnified image. You can also double-click the View tool in the Tool well to set the image to 1:1 (or 100%) magnification view, which shows every pixel. This is best when examining small details, and when previewing the effects of Resize's sharpening on your photo.

## NAVIGATOR, LEVELS AND INFO

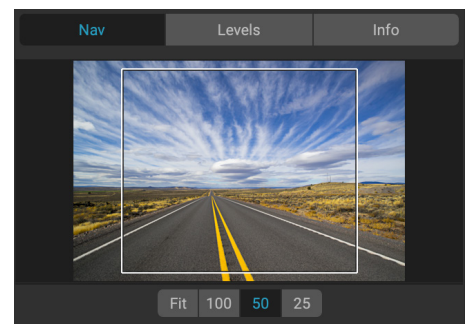
At the top of the control panel on the right of the main window are the Navigator, Loupe, Levels, and Info panes. These four panes can be useful for inspecting and viewing details in your image.

### The Navigator Pane

This gives you a birds-eye view of your image. The white square region marks the image area that is visible in the preview pane. You can pan view by clicking and dragging inside the white region.

At the bottom of the Navigator pane are several zoom buttons:

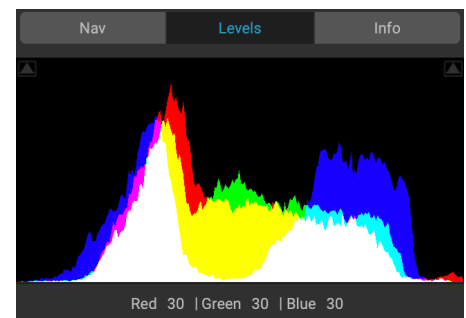
- **FIT:** Zooms to fit the current canvas size.
- **100:** Zooms to 100%, or actual pixels.
- **50:** Zooms to 50%
- **25:** Zooms to 25%



### The Levels Pane

This gives you a color chart of the shadow, mid-tone and highlight areas based on the image RGB values (often called a histogram). This is useful to show areas within the image that may be clipping. Clipping is when your image contains pure blacks or white and can signify loss of highlight or shadow detail.

The left side of the histogram represents the shadows, while the right represents the highlights. At the top of each end is a triangle. If the triangle is lit, there is clipping on that side of the histogram. If you click on the arrows, you will activate the clipping overlay on your image. The areas of your image with a blue overlay are pure black, while the areas with the red overlay are pure white. You can turn the clipping view off again by clicking on one of the triangles. You can also temporarily enable clipping view by holding down the J key at any time. The clipping view is useful when you are making adjusts to the brightness and contrast of your image.



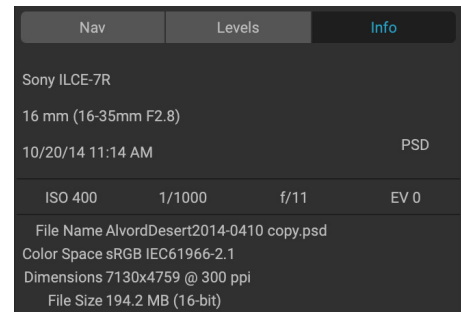
The Levels pane also displays the RGB values under the cursor at the bottom of the pane.



## The Info Pane

The info pane displays important photo metadata, including:

- Camera type
- File type
- Focal length and lens information
- Date and time captured
- Exposure information
- ISO
- Shutter Speed
- Aperture
- Exposure Value
- Filename
- Color Space
- Dimensions
- File Size



If your camera allows for GPS the GPS button will be viewable and you can click on it to get the GPS coordinates for where the image was taken. This feature only works if you have GPS enabled on your camera or mobile device. Otherwise you will not see the GPS button.

## CROP TOOL

The Crop tool is used to crop and resize the entire image. Resize's Crop tool removes any pixels outside a crop box and changes the canvas size at the same time.

To crop the image, select the Crop tool. Then adjust the corner handles of the crop tool overlay. The area outside the crop box appears darkened for guidance. You can resize and move the image inside the crop box. When you are satisfied, press the Apply button in the Tool Options bar or press Enter.



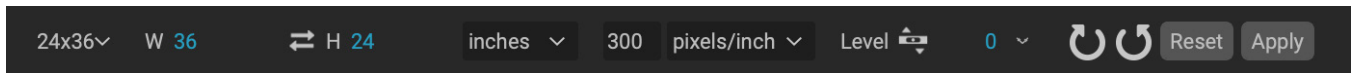
*The Crop Overlay in Resize.*

## Working with the Crop Tool Overlay

- **Moving the Image:** To move the image inside the crop box, click and drag inside the box. You can also nudge the image using the arrow keys on your keyboard.
- **Resizing a Crop Box:** To resize the Crop Box, click and drag on any of the resize handles. Clicking on a corner handle allows you to adjust two sides at the same time. Clicking on a side

handle allows you to adjust that side. If you hold the shift key down while adjusting the size, the proportions of the box are maintained. To rotate the crop box, move outside a corner until the tool changes to rotate. You can also set the aspect ratio or size of the crop box in the Tool Options bar.

## Crop Tool Options Bar

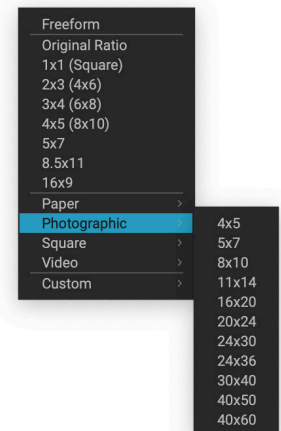


- **Preset pop-up:** Pop-up controls the crop tool mode as well as aspect ratio and document size presets.
- **Width:** Sets the width of the crop box.
- **Swap Dimensions:** Swaps the width and height. Handy for rotating the crop box.
- **Height:** Sets the height of the crop box.
- **Units:** Determines the unit of measure: Pixels, inches, centimeters, etc.
- **Leveling tool:** Click and drag this tool across an element in your image that should be level.
- **Angle:** See and adjust the angle of rotation.
- **Rotate:** Rotates the image 90 degrees.
- **Cancel:** Resets the crop tool.
- **Apply:** Applies the crop and resizes your photo.

## Crop Tool Modes

The Crop tool works in three modes, which are all accessible via the Preset pop-up in the Tool Options bar:

- **Freeform:** In this mode you can adjust the crop box any way you like. The image will not be resized. Any area outside the crop box will be trimmed off. Use this mode if you just want to change the shape or recompose your image for general use.
- **Aspect Ratio:** You can lock the crop box to an aspect ratio. This makes sure the crop box shape doesn't change, just the size. Use this option to trim existing pixels while maintaining a ratio without resizing the image.
- **Document Size Presets:** These let you crop and resize your image at the same time. If you know your intent is to print the image at a certain size you can crop and resize the image at the same time. Many common sizes are included plus you can create your own.



*The Crop tool preset pop-up includes options for nearly every aspect ratio or print size.*

## Leveling the Image

The Crop tool has a special Leveling tool for automatically rotating your image to be level. To access it, first select the Crop tool, then perform the following:

- Select the Leveling tool from the Crop tool options bar. Your cursor will change to the Leveling tool.
- Click and drag a line across your image that should be level, either horizontally or vertically. When you release the mouse the image will be rotated automatically to the correct angle.

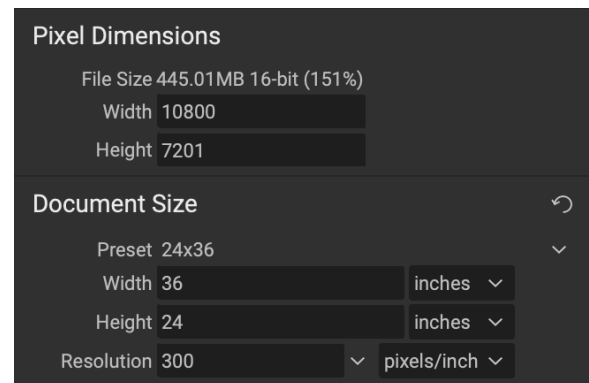
## ADJUSTING THE IMAGE SIZE

In Resize, you can adjust your image size using either the Document Size pane or the Crop tool options bar. The information in these areas are interrelated and locked together. Adjusting the values in either pane will lead to changes in the other pane.

The Document Size pane displays the current desired Document Size, or the original size if you have not adjusted anything. Type into the Width or Height fields to change the Document Size.

The Width and Height fields are locked together to maintain the photo proportions. Changing the width will change the height proportionally. Resize does not support non-proportional scaling. If you would like to change the proportions of the image, use the Crop tool.

The Document Size Presets make it easy to crop and resize your photo at the same time. Simply select one to set the width and height automatically. This also selects the Crop tool, so you can adjust the document size to fit your photo. You also control your resolution, known as pixels per inch or dots per inch. This is important to adjust based on your output device.



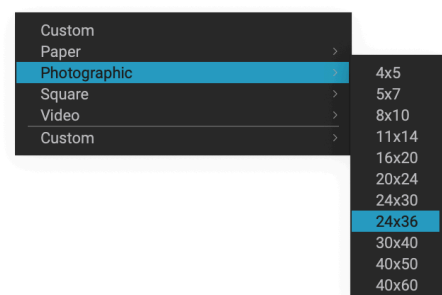
The Pixel Dimensions pane displays the image size in pixels, the file size, bit-depth and scaling factor.

## Using Document Size Presets

Document size presets allows you to crop and resize your image simultaneously. Often, when you are using ON1 Resize it is to create a file for print output at a known common size. In these cases, using a Document Size Preset can be the fastest way to set your Document Size and crop your image to the needed proportions.

Follow these instructions to use a Document Size Preset:

1. Select your desired size from the Document Size preset pull-down in the Document Size pane, or Crop tool Options bar. You will see that the Document Size fields will be completed automatically for you and that a crop box is drawn on your image matching the proportions of the document size preset that you selected.
2. If needed, select the rotate crop box to rotate your crop



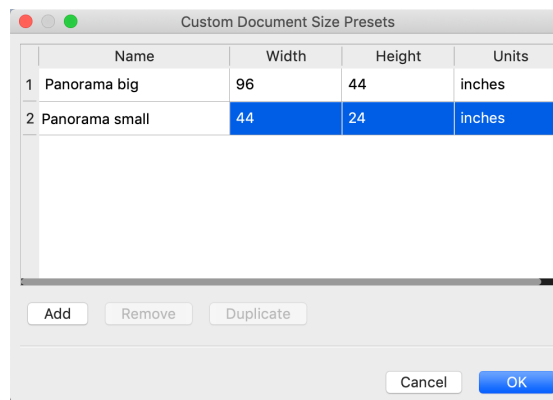
*The Photographic Document preset category contains many traditional print sizes.*

box to the proper orientation. It will automatically rotate to match the orientation of your image, but if you want to crop differently you may need to rotate it.

3. You can use the Crop tool to reposition and change the size of the crop box so that it contains the image area that you want. Note that the crop box proportions and Document Size are locked so that you will always have the finished document size that you requested.
4. Adjust your resolution to what is needed for your output device. If you are unsure what to select, use the resolution drop-down menu for common settings.

Resize comes with many commonly used print, paper and video document size presets but you can also create your own:

- Select your image and launch Resize.
- From the Document Size Preset pull-down, select Custom > Manage Custom Sizes.
- Click on the Add button.
- Double-click on the highlighted untitled name and name your preset.
- Double-click on the width and height and fill in the proper values.
- Click on the units and select the proper unit.
- Click on the OK button.



*You can easily create your own custom print size presets inside Resize.*

**TIP:** If you select the incorrect Document Size Preset you can change it by selecting a different one. If you do not wish to use a Document Size Preset after you have selected one you can press the Reset button in the Document Size pane or the Cancel button in the Crop tool options bar.

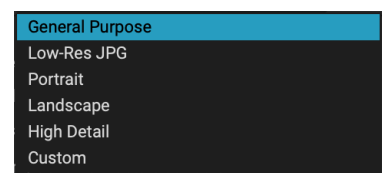
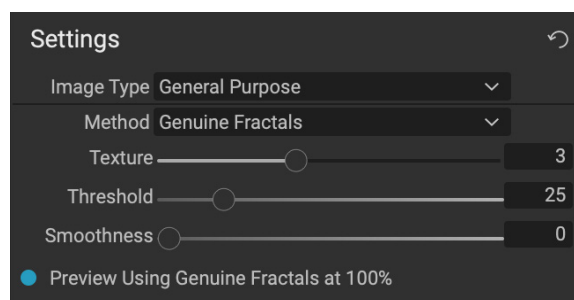
Also, the Lock Crop option locks the proportions and document size settings for the given crop. This is on by default when you use a Document Size Preset.

## SETTINGS PANE

The Settings pane contains the controls for selecting and adjusting the resizing method (or algorithm) and its settings. Selecting the correct settings here can improve the quality of the results.

### Image Type

To help you get started, try one of the presets in the Image Type drop-down menu. This pop-up contains presets for different image categories (portraits, landscapes, etc.). Choosing one will adjust the settings for Texture, Threshold and Smoothness automatically.



*Options for the Settings pane's Image Type menu.*

### Method

The Method drop-down selects the method, or algorithm, used to resize the image. The options are:

- **Genuine Fractals:** This is the classic, patented, fractal-based algorithm that has made Perfect Resize the standard for over a decade.
- **ON1 Resize Portrait:** This is a new variation on the Genuine Fractals algorithm designed for portrait images. It is slightly softer and does a better job representing skin and hair textures.

### Texture Controls

When you select the Genuine Fractals method there are several other controls—Texture, Threshold, and Smoothness—that tune the resizing algorithm based on the image. These all have to deal with the texture of the image. If you were to analyze an image from a detail perspective you could break it into three categories: Edges, Continuous Tone and Textures.

Edges are the sharp details that define the edges of the subject in your image. It's paramount that these be maintained in order for your enlargement to maintain quality. Continuous tone areas—like skin or skies—are mostly solid or graduated color. These resize easily as there is little detail in these areas.

Texture, in Resize's nomenclature, are the areas that fall between these two. They are areas that still contain detail but are not sharp edges. These are things like the surface of rocks, tree bark, fabric, animal fur, etc. The amount of detail in these texture areas can have a large impact on the perceived sharpness and quality of an image.

With ON1 Resize you can control the key algorithm variables that effect these areas. And, you can use presets for different image types and subject matters that help you get the best results in reproducing these textured areas.

Here's how to think of the sliders in the Settings pane, as you adjust the look of an image:

- **Texture:** This controls the amount of detail in flat, non-edge areas of an image. If your image contains lots of small detail that does not have defined edges (many organic patterns like leaves, rock, bark; or man-made patterns like fabric) it may be good to increase the amount to a setting of 4 or 5. Settings beyond 5 will often introduce a bumpy noise pattern which

is undesirable unless your original image was from scanned film. Settings lower than the default 3 are useful for images with large areas of continuous tone that have no appreciable detail (sand, snow, sky) but have hard edged foreground subjects such as landscape images, architecture or portraiture.

- **Threshold:** This controls the amount of hard edge detail that is enhanced. The default setting is 25. Decreasing the threshold will focus the algorithms on edge information. This may be useful for portraiture or for reducing noise in your image. Settings higher than 25 will increase the amount of small detail in flatter areas of the image. Settings as high as 100 are useful for highly detailed images (hair or feathers). Higher threshold settings will also make ON1 Resize process faster. A good way to start adjusting these controls is by setting the threshold to 100 and then move the Amount up until the image is too noisy (bumpy) and then reduce the threshold to smooth out the noise in continuous tone areas. For detailed images with no little or no continuous tone, you might try the amount at 4 and the threshold at 100. For portrait images or images with JPEG artifacts you should try an amount of 2-3 and threshold of 25 or lower.
- **Smoothness:** The smoothness slider is used to reduce artifacts along hard curved edges. Use the lowest setting needed.

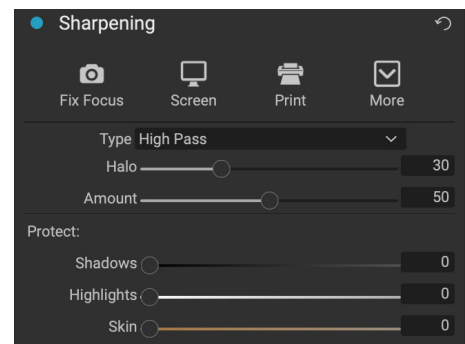
The last item in the Settings pane, **Preview Using Genuine Fractals at 100%**, will use that algorithm to preview quality at 100% zoom, so you can more accurately adjust the items in the settings pane, as well as controls in the Sharpening pane.

## SHARPENING PANE

The Sharpening pane contains the controls to add additional sharpness to your image.

ON1 Resize features three sharpening methods:

- **Unsharp Mask:** Good for general sharpening. Similar to Photoshop's Unsharp Mask function. Resize's sharpening is different in that it is only applied to the luminance of the image, to prevent color artifacts.
- **High Pass:** High Pass sharpening is helpful when the original image is not sharp.
- **Progressive:** Similar to Unsharp Mask, except it sharpens different amounts depending on the size of the details in the image. Small details are enhanced more than large ones.



Using the Sharpening controls can save you the workflow step of adding additional Sharpening before printing and can help compensate for loss of sharpness due to dot gain from your printer. Sharpening should only be applied at the end of your workflow just before printing. If you plan to do additional retouching or compositing work after resizing your image, you should disable the Sharpening controls.

To sharpen your image for output, use these steps after you have adjusted the Document Size pane controls:

1. Zoom in on your image to 1:1. You can do this easily by using the 1:1 Zoom preset located in the Navigator pane.



2. Enable the Sharpening controls by toggling the on/off control in the pane's title bar.
3. Select the sharpening method that will provide the best results for your image. You may need to experiment to determine this.
4. Adjust the amount slider to determine the amount of sharpening desired.
5. Use the Highlight and Shadow sliders to limit the sharpening from being applied to the darkest and lightest areas of the image which can prevent sharpening of noise.

## FILM GRAIN PANE

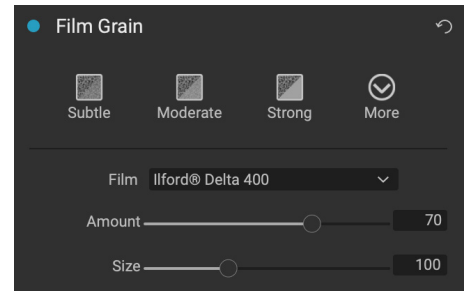
The Film Grain setting controls the amount of simulated Film Grain (noise) to your image. Adding a modest amount of grain can make your image appear sharper visually and can help hide imperfections (such as JPG artifacts).

Adding film grain can be especially useful for monochrome images, and should be added just before printing. If you need to do other retouching or compositing work in Photoshop or Layers after resizing your image, you should disable the Film Grain controls in Resize.

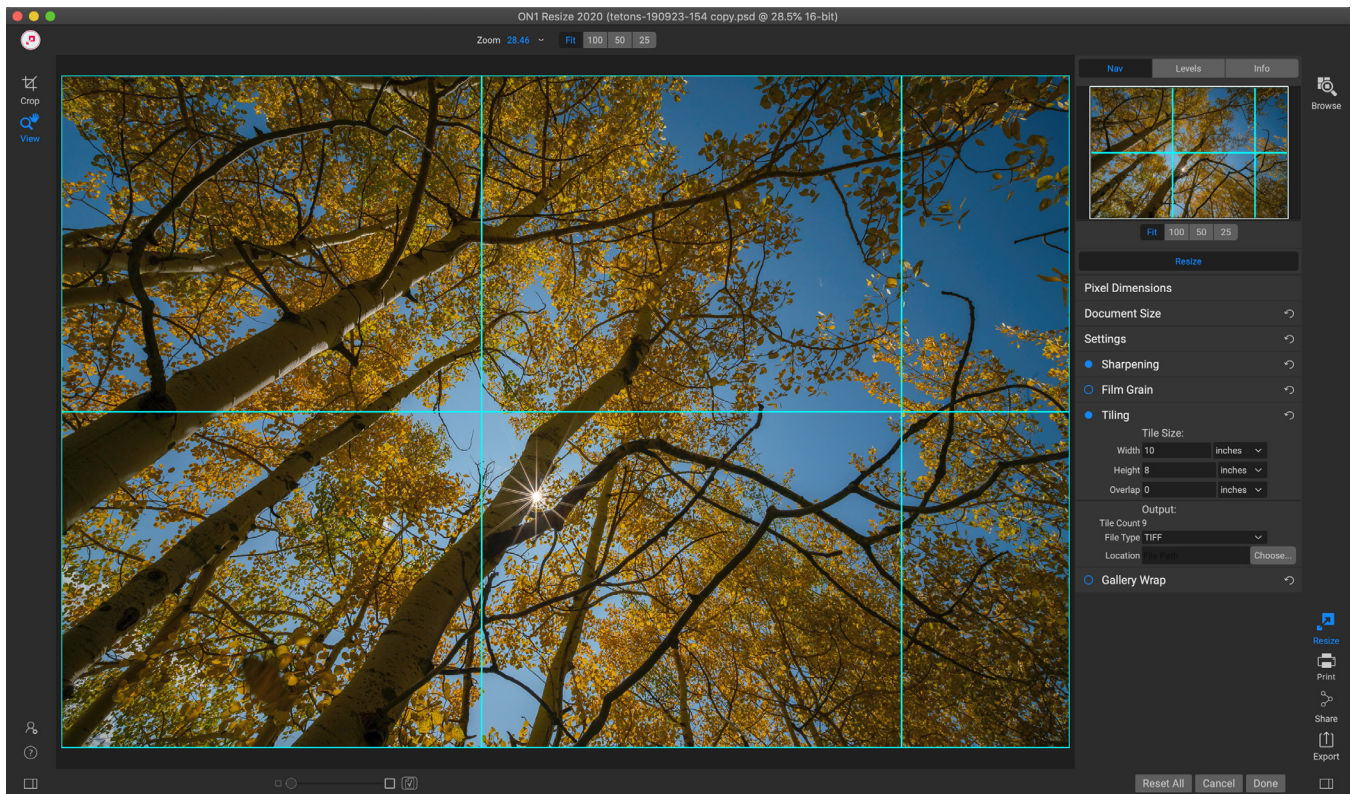
To add Film Grain to your image follow these steps:

1. Zoom in on your image to 1:1. You can do this easily by using the 1:1 Zoom preset located in the Navigator pane.
2. Enable the Film Grain controls by toggling the on/off control in the Film Grain pane title bar.
3. Adjust the slider up or down until the desired amount of Film Grain is added.

You can preview just the effect of the Film Grain by toggling the on/off control in the pane's title bar.



## TILING PANE



*When you want to print big, but lack the big printer, Resize's Tiling feature lets you create flexible, tiled prints on smaller paper sizes.*

The tiling feature in Resize divides an enlargement into smaller pieces so that the image can be printed on a smaller printer. For example, you might want to create a mural that is 8 feet tall by 12 feet wide, but your printer can only print 24-inch wide strips. With the tiling feature you could automatically create four separate files that are 24 inches wide and 8 feet tall, to create your mural in sections.

With the tiling feature all you do is specify the size of paper you have to print on and if you would like the pages to overlap. Then ON1 Resize will resize your image and section it down into the individual tiles.

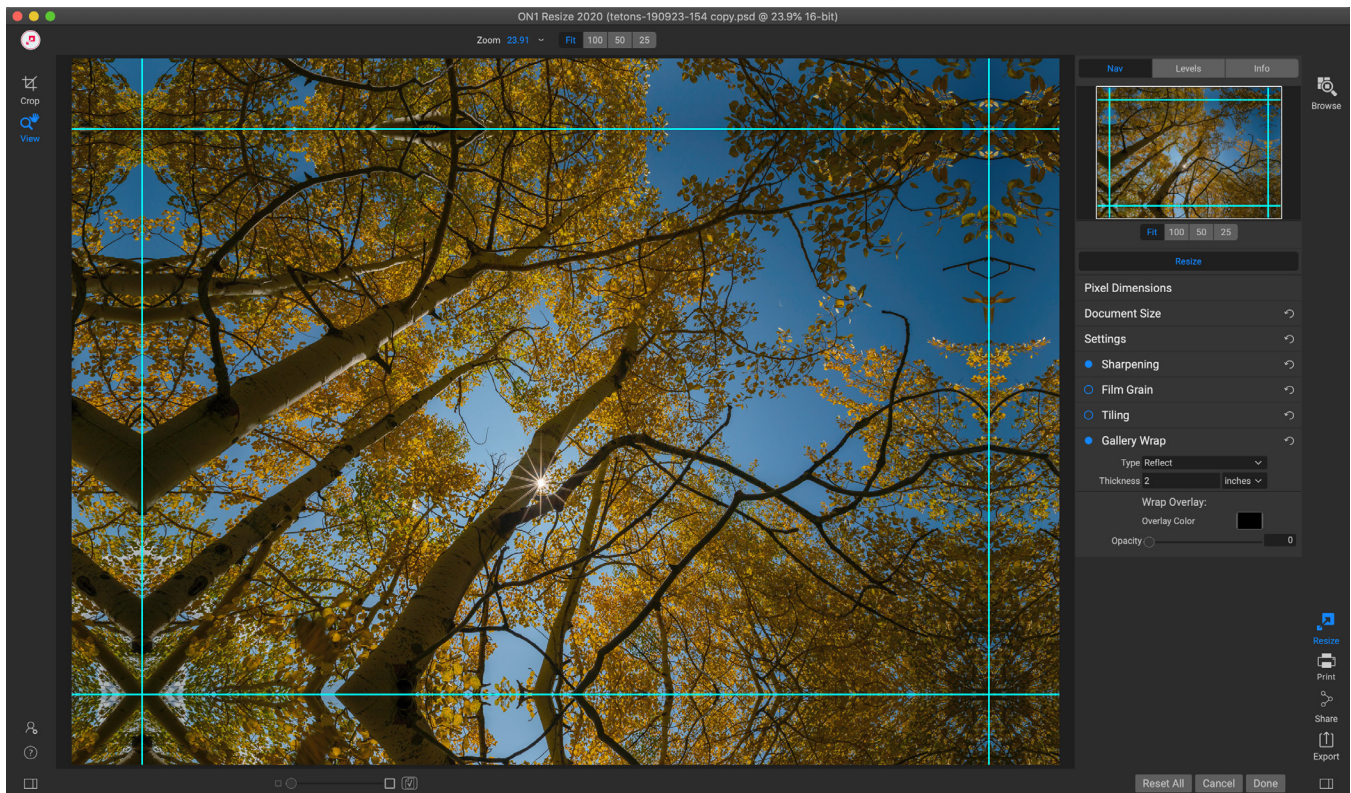
To use the Tiling pane:

1. Turn Tiling on by toggling the on/off switch in the pane header.
2. Set the Width and Height fields to the size and orientation of paper that you wish to print on, or you can select the number of rows and columns instead.
3. Set the Overlap size. The overlap makes each tile overlap so you can tape multiple panels together and corrects for printer margins if you are not printing borderless.
4. Set the file type for the newly created files for each tile.
5. Set the destination folder for the new files. Each file will be named with the original filename and the tile indicated in the filename.

The preview will show cyan guide lines for each tile that will be created. The bottom of the Tiling pane will tell you how many tiles will be created.



# GALLERY WRAP



The Gallery Wrap feature is designed to help you print on canvas. When making enlargements for canvas it is common to wrap a portion of the image around wooden stretcher bars. These can be several inches thick and help mount the canvas. These are commonly called gallery wraps. However, if you had important detail near the edges of the image, it might be lost in the wrapping process. ON1 Resize's Gallery Wrap feature automatically creates extended margins by reflecting or stretching the areas near the edge of the image without having to sacrifice any of the original image. You can select the thickness of the mounting bars and use different options for creating additional margins.

To use the Gallery Wrap feature:

1. Turn on the Gallery Wrap feature by toggling the on/off switch in the pane's title bar.
2. Set the Thickness control to the amount of margins you would like to add. A good rule of thumb is to use the thickness of the stretcher bars, plus half an inch.
3. Select the Type you would like to use (see the list below for details on the different options).
4. If you wish to add a color overlay to the gallery wrap wings set the color and opacity.

The Gallery Wrap feature has several settings for adding margins and adjusting the look of the wrap:

- **Reflect:** Copies an area equal to the thickness setting around your image, then flips each side and adds it as the margins. This is a good general-purpose technique.
- **Reflect Soft:** Does the same as the Reflect method but softens the added margins.
- **Stretch:** The Stretch method takes a small area around the edge of the image and stretches it to add the margins.
- **Stretch Soft:** Does the same as stretch, but softens the added margins.

The Thickness slider controls how thick your canvas stretcher bars are. Two inches generally works well for most gallery wraps.

You can darken the wrap or add a solid color to the wrap area with the Overlay Color and Opacity sliders. (The Opacity's default is 0, which means that there is no color overlay added.)

The Add to New Layer option places the wrap wings on their own layer, rather than merging them with the image. This only applies when working via Layers or Photoshop in a layered workflow.

## PRESETS

Resize has a preset system built into it, which is designed to help you get very specific crops for a wide range of paper and printer types. These include settings for photo lab print sizes, and many Epson, Canon and HP large-format printers, with Matte, Resin Coated, and Canvas types.

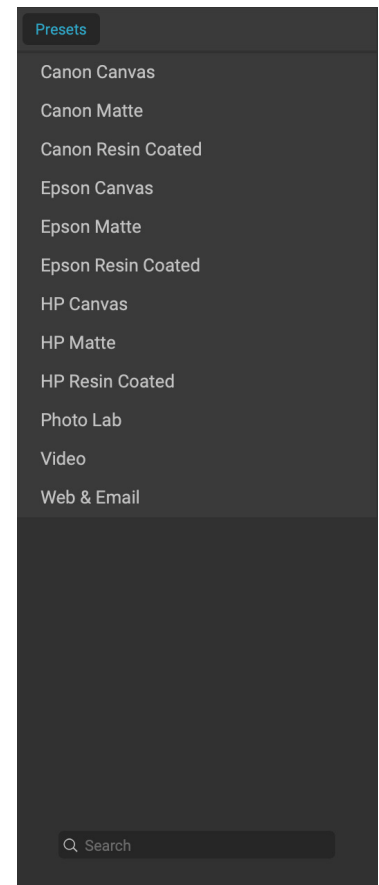
In addition to being able to set document size and settings, and settings in any of the other panes, Resize presets always contain a Crop adjustment. What that means is that any time you apply a preset, Resize selects the Crop tool and places the crop overlay on top of your file. There, you can move the overlay to the appropriate crop area (or resize the crop) for your photo.

To apply a preset, choose the category you would like to use from the Presets panel. The category will expand to a list of the available presets for that group. Then, just click on the preset you want to apply.

### Saving a Preset

Once you have your settings that you wish to save, go to the Preset menu and select Save Preset, and choose a category you would like to save it in. If you have applied a preset to an image and make adjustments to any of the settings in the left panel, you can update that preset with the new setting by choosing Update Preset with Current Settings from the Preset menu.

To delete a preset, right-click on the preset in the Presets Browser and choose Delete Preset.



**NOTE:** You can also import and delete Resize presets from within the Extras Manager. See [“Extras” on page 9](#) for more.



## SOFT PROOFING IN RESIZE

ON1 Resize's soft proofing feature lets you see how a photo will look when printed, using the color profiles that get installed with your printer. Soft proofing helps you determine where there might be issues when you print, so that you can adjust your tone, color and effects to give you a print that is closer to your editing vision.

Normally, when you're viewing an image in Resize, you are viewing it through the lens of your monitor's display profile. The color gamut of your computer's display is wider than that of most photo printers, which means that some colors you are able to view on-screen are not reproducible when you print. When this happens, the color profile conversion that happens in the print engine will cause substitutions of colors that the printer cannot print to the closest color that it can. This means that your image could have subtle (or broad) shifts in color, especially in certain color ranges.

Soft proofing is turned on via the View menu, or by clicking on the soft proofing icon to the left of the Preview button at the bottom center of the main Resize window. The background of the main preview window will change to approximate the color of the paper you're profiling.

Additional soft proofing options are available underneath the Enable Soft Proofing command in the View menu. The options are as follows:

- **Gamut warning:** When checked, this displays a red overlay for those colors in the image that are out of gamut for the current print profile set in the Soft Proofing menu.
- **Profiles:** The Profiles submenu lists the currently available printer profiles. Choosing one will change the on-screen display to use that profile.
- **Intent:** Resize offers two different rendering intents when soft proofing, used to convert the color from display to print. Perceptual shrinks the color gamut, which works to preserve the relationship between colors in the image. Relative only converts colors that are outside the current color gamut; this can sometimes cause two colors, one in gamut, and one outside, to be identical after conversion.



*These three screen shots show the results of soft proofing options, as viewed in Resize. The top image is with soft proofing off (and is using the display color profile). The middle image is with soft proofing turned on, and using a printer profile for Epson's Exhibition Fiber Paper. The bottom image has the Gamut warning turned on; out of gamut colors are highlighted by the bright red overlay.*

Neither rendering intent is perfect or desired; it often is a matter of the makeup of the image, your editing intent, the paper being printed on, and so forth. Often, you'll want to switch back and forth between Relative and Perceptual, seeing which gives you a better print.

- **Simulate Paper and Ink:** Turning this setting on will cause Resize to use the white point for the chosen paper type (instead of the white point of your monitor), and the paper's actual black density (instead of the display's black point). If you're trying to match a print, you will usually want this setting turned on.

Adjusting images with soft proofing is often a bit of trial and error. It's easy to get caught up in eliminating out-of-gamut colors, but most modern photo printers—both home printers and online print services—do a pretty good job of approximating colors properly.

The biggest thing you want to be looking for when viewing a soft proof is tone, contrast and color accuracy between screen and print.

## UNDERSTANDING RESIZE: HOW BIG CAN I PRINT?

People often ask how large a print can be made with ON1 Resize. If your original image is sharp, has good details and little noise, you could go as large as 1000% of the original size. 1000% is ten times the size of the original file. For example, an original file that is 8" x 10" could be resized to 80"x100". Viewing distance plays a big part of this. Standard viewing distances are two-times the diagonal of a print. For example, for an 8"x10" it would be about two feet away. An 80"x100" would be about 21 feet. That seems like a lot but that image is almost 7'x9'. Keep in mind that many photographers scrutinize their images closer than standard viewing distances.

Images are perceived in color, tonality and sharpness. Other interpolation techniques maintain color and tonality but sacrifice sharpness by "inflating" the image uniformly. The image still looks familiar but will not be crisp. Depending on the amount of interpolation, this can be severe and noticeable even at standard viewing distances. ON1 Resize maintains the color, tonality, and sharpness of an image at all sizes. It will always look the same when viewed at the proper distances.

It is unrealistic to assume that the fidelity when viewed at 100% will be the same for an 8x10 and an 80x100 created by ON1 Resize. ON1 Resize will maintain the edges which perceptually make the image sharp, but it cannot create detail where there was none in the past. When the shutter is pressed, a finite amount of detail is captured. A good way to think about this is to look at an insect on a leaf. If you look at it with a magnifying glass, you will see more detail than you did than when looking at it with the naked eye. Now if you take a digital photograph of that same insect and look at it in the computer and zoom in past 100% you do not see any more detail. The information you see is limited by what the camera captured. ON1 Resize works the same way, it cannot create new detail but instead takes the finite amount of detail available and increase it in size.

ON1 Resize isn't magic. We have all watched CSI, where they take a security photo and enlarge the reflection in the victim's eye to see the killer, with results that look amazing. This is science fiction. You cannot create detail where there was none before. But if your original file has good detail and little noise, you will be able to make very good looking enlargements from your files. This is what ON1 Resize does better than any other software.



## HOW MUCH RESOLUTION DO I NEED?

To answer this, you need to know two things:

1. The size of the print you need to make.
2. The resolution that your printer needs for best results.

The size of the print is as large you would like. This may be limited by the size of your printer. Resolution is the density of the pixels for a given distance, usually measured in pixels or dots per inch. Most modern inkjet printers print anywhere from 1200 to 4800 dots per inch (what the printer manufacturers really mean is 1200-4800 droplets of ink per inch). Inkjet printers use many tiny round droplets of 4-12 ink colors to reproduce one square pixel in your image that could be one of any millions of colors. A common mistake is to set the resolution of the file to the resolution of the printer. In all but a few special printers this will lead to huge files that will not print well, if at all. The secret is that the human eye cannot see more than 250-300 pixels per inch. So the ideal resolution for your files should be close to this. Once you know the print size and resolution, it is easy to use ON1 Resize to resize your file to the desired output. Simply input the resolution and then either the print width or height. You'll see that the corresponding dimension is automatically filled in by ON1 Resize based on the proportions of your image.

Keep the proportions in mind because the proportions of film, digital camera sensors and paper can all be different. For example, most digital camera sensors are proportioned so that the height is two-thirds the width or 1:1.5; While the most common paper size, in the US, is the letter which is 8.5×11 inches or about 1:1.25. These kind of proportion mis-matches are common and require that the original image be cropped to fit the proportions of the paper size. If your image cannot be cropped without ruining the composition then you will need to adjust your print size to a longer dimension.

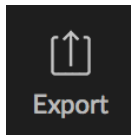
Resizing an image larger than the original size requires new pixels to be created. This process is called interpolation or resampling. There are many mathematical ways, called algorithms, to do this. The most common method used by many pixel editing applications is called bicubic interpolation. Bicubic along with its newer variants bicubic smoother and bicubic sharper work by averaging a small group of neighboring pixels to determine the color value of the new pixels to be added. While this technique is fast, it does not distinguish edges so there is a uniform loss of sharpness and detail across the image.

Resize's patented scaling algorithm is fundamentally different from bicubic or other interpolation methods. While other methods sample nearby pixels and decide new pixel values one by one, ON1 Resize uses a sampling technique called Fractal Scaling. Fractal Scaling samples nearby "blocks," square groups of pixels, and varying sizes, compares them to smaller versions of the original image and mosaics these patches together to create a larger version of the original. By doing this repeatedly, often the characteristics of the image like edges, smooth areas, and textures are reinforced for each larger version. Noise is de-emphasized and sharp details are maintained. All this number crunching may take a bit longer than the single pass interpolation methods like bicubic, but good things come to those who wait and the reward is far superior results.

## **PART 4:**

# **EXPORT, PRINTING AND SHARING**

# Export



Export is a special panel that is available throughout ON1 Resize 2020. It is the engine for the export process, whether you're exporting final files from within Browse or Resize. The Export pane gives you much of the power of the Genuine Fractals technology in an easy to use panel, letting you export your photos with incredible flexibility, ease and control.

The Export pane is always available, from any module, as long as you have a photo selected (you can also batch export files selected as a group in Browse).

To open the panel, click the Export icon in the lower right corner of the module selector, or choose Export from the File menu. Once selected, the Export panel opens on the right side of the window, letting you select a group of options as you prepare to export a photo. By default, the panel includes three active panes, which are fairly straightforward to use: File Type, Location, and Rename, which are all located at the bottom of the panel. These are the minimum options needed to export a file, but you can also add the following panes to the panel, expanding your export controls: Photo Size, Watermark, Sharpening, Tiling and Gallery Wrap.

## FILE TYPE

The File Type lets you choose what format you want your photo to be exported as, along with a color profile that you wish to assign to the exported file. The type options are Photoshop, Photoshop Large Document, JPEG, TIFF, and PNG.

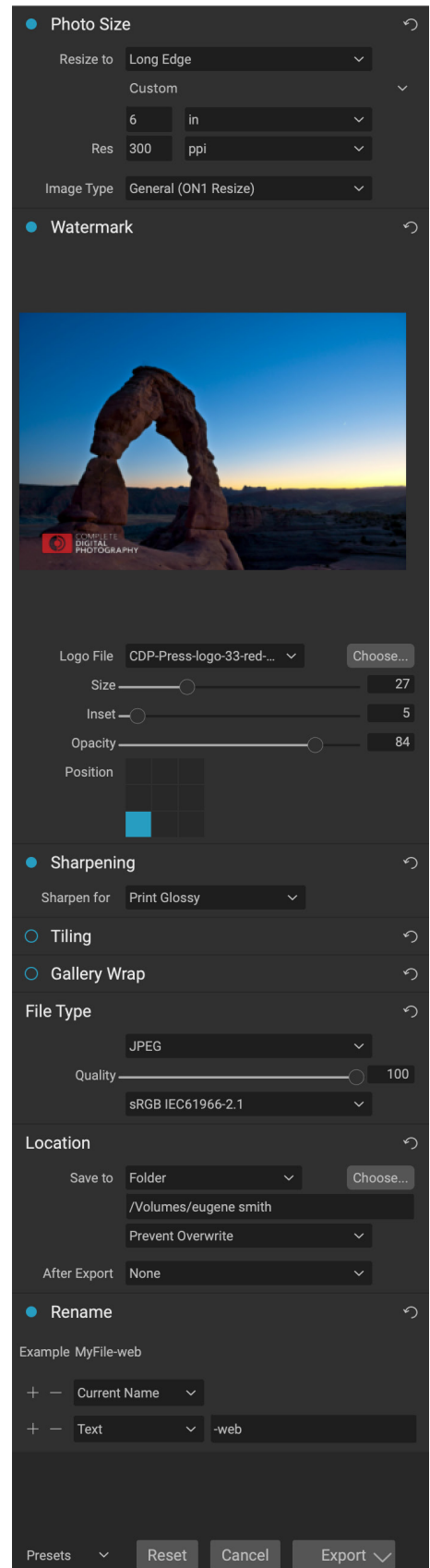
Saving as JPEG lets you choose a Quality setting, with 100 being the highest.

## LOCATION

Click the Choose button to select a location, or click on the Save To pop-up for more options, including:

- **Current Folder** will write the file to the same location as the original file.
- **Folder** lets you choose a location
- **Round Trip** (only available when exporting through Adobe Lightroom) saves the file over the original and uses the same format, bit-depth, color space and name.

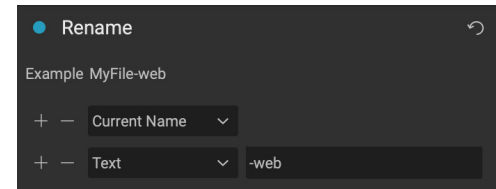
With regard to the other options in this pane, If Prevent Overwrite



is selected the word 'copy' will be added to the file(s); otherwise it will overwrite your original image if the destination is set to Current Location. You can also have Resize open the folder you exported your image to by choosing the Show in Finder (MacOS) or Show in Explorer (Windows) option from the After Export menu.

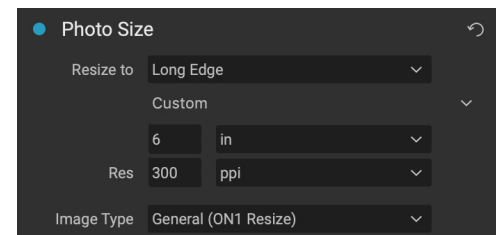
## RENAME

This option may be used to rename the file name. The options include: Current Name, Text, Date and Number. The field to the right allows you to enter a custom name. The plus and minus icons will allow you to add or remove naming elements. Current Name will use the source name without the file extension. Text is used for assigning a custom text string. Date lets you add today's date in any one of 12 standard formats. Number creates an automatically incremented number, starting with the number input in the field. Reset will clear all current settings.



## PHOTO SIZE

The Photo Size pane displays the original image size when you first open it. You can simply type into the Width or Height fields to change the document size, or you can choose from a variety of preset sizes—including standard photo paper sizes—by clicking on the pop-up menu underneath the Resize To pop-up.



Keep in mind that the Width and Height fields are locked together to maintain the photos proportions. Changing the width will change the height proportionally. Export does not support non-proportional scaling. If you would like to change the proportions of the image it requires cropping.

The Long Edge and Short Edge options in the Photo Size pane are useful when you want to lock one edge to a specific length or width and don't care about the sizing of the other edge. Simply choose which option is the important one for your photo, enter the dimensions, and Export will resize your photo accordingly.

**NOTE:** Export does not offer any options for cropping, and if you choose an aspect ratio that is different from that of your photo, on export, your photo will be cropped from the center point out to meet the new ratio. If you wish to crop to a different ratio, it is better to use Resize.

The units of measurement can be switched by clicking the down arrow. You also control your resolution in pixels per inch. Use this setting to optimize for your output device.

The Photo Size presets make it easy to set the width/height of your image in a preset size. Use the drop down menu to select a preset size or choose custom to create your own.

The Image Type drop down provides a few options for resizing:

- **General (ON1 Resize)** uses the ON1 Resize algorithm, also known as Genuine Fractals, ON1's patented, fractal-based algorithm for image enlargement.

- **Low-Res JPG** is best for enlarging low resolution JPEGs (this setting use the bicubic algorithm method).
- **Portrait** works well for resizing portraits protects skin tones from artifacts (uses bicubic algorithm method).
- **Landscape** is great for Landscape photos (uses ON1 Resize algorithm).
- **High Detail** is great for images with many small items (uses ON1 Resize algorithm).

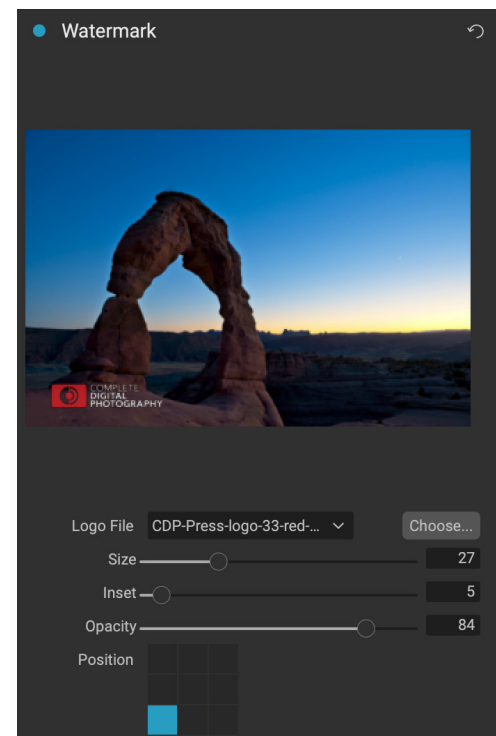
## WATERMARK

The Watermark module allows you to add an overlay to the image, most often used for your logo, signature or copyright. Watermarks generally need a transparent background, so make sure your watermark file is a PNG or PSD.

The module has the following options:

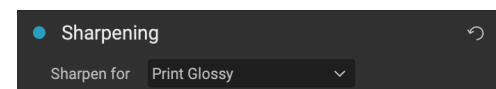
- **Choose:** Click the Choose button to select the file you wish to use as your watermark.
- **Size:** This slider controls the size of the watermark file.
- **Inset:** This will determine the percentage in which the file is inset from the edge, based on the Position (see below).
- **Opacity:** This sets the opacity of the watermark.
- **Position:** This grid sets the location of the watermark. Click on the square of the location you desire.

When working with watermarks, make sure your watermark file is sufficiently large for your usage. For example, if you want it to appear 2 inches wide on a 300-ppi image, your watermark needs to be at least 600 pixels wide. Or if you want it to appear across an entire photo—such as when posting to social media—it needs to be the same size as what you are exporting for the web, typically over 1000 pixels. Using a watermark file that is too small will create a pixelated watermark appearance.



## SHARPENING

The Sharpening pane adds additional sharpness to your image, and are designed to be general options for screen or print work. Using these controls can save you the workflow step of adding additional sharpening before printing and can help compensate for loss of sharpness due to dot gain from your printer. Sharpening should only be applied at the end of your workflow, just before printing. If you plan to do additional retouching or compositing work after resizing your image, you should disable the sharpening controls.



## TILING

The tiling feature in Export divides an enlargement into smaller pieces so that the image can be printed on a smaller printer.

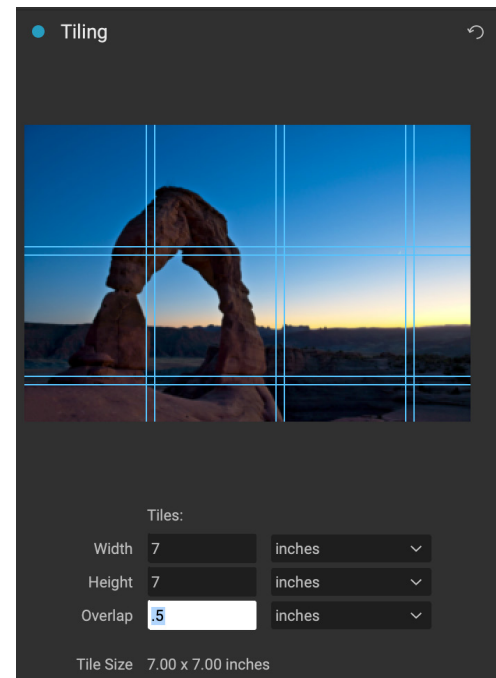
For example, you might want to create a mural that is 8 feet tall by 12 feet wide, but your printer can only print 24-inch wide strips. With the tiling feature you could automatically create four separate files that are 24 inches wide and 8 feet tall, to create your mural in sections.

With the tiling feature all you do is specify the size of paper you have to print on and if you would like the pages to overlap. Then Export will resize your image and section it down into the individual tiles.

To use the Tiling pane, follow these instructions:

1. Set the Width/Height fields to the size and orientation of paper you wish to print on, or select the number of rows and columns instead.
2. Set the Overlap size. The overlap makes each tile overlap so you can tape multiple panels together and corrects for printer margins if you are not printing borderless.

The preview will show cyan guide lines for each tile that will be created.

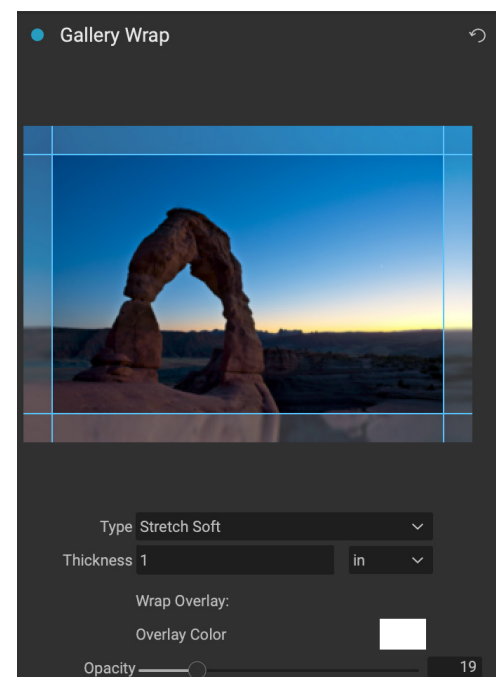


## GALLERY WRAP

The Gallery Wrap feature is designed to help you print on canvas. When making enlargements for canvas it is common to wrap a portion of the image around wooden stretcher bars. These are used for mounting the canvas. These are commonly called gallery wraps. However, if the photo has important detail near the edges of the image they may be lost in the wrapping process. The Gallery Wrap feature in ON1 Resize automatically creates extended margins by reflecting or stretching the areas near the edge of the image allowing the photographer to create a gallery wrap without having to sacrifice any of the original image. The Gallery Wrap feature allows you to select the thickness of the canvas mounting bars and offers a variety of techniques for creating additional margins.

To use the Gallery Wrap feature follow these instructions:

1. Set the Thickness control to the amount of margins you would like to add. A good rule of thumb is the thickness of the stretcher bars, plus half an inch.
2. Select the Type you would like to use.
3. If you wish to add an overlay to the wrap wings, set the color and opacity.





The Gallery Wrap feature has several settings for adding margins and adjusting the look of the wrap. The Type pop-up has four options:

- **Reflect:** Copies an area equal to the thickness setting around your image, then flips each side and adds it as the margins. This is a good general purpose technique.
- **Reflect Soft:** Does the same as the Reflect method but softens the added margins.
- **Stretch:** The Stretch method takes a small area around the edge of the image and stretches it to add the margins.
- **Stretch Soft:** Does the same as stretch, but softens the added margins.

The Thickness slider controls how thick your canvas stretcher bars are. Two inches generally works well for most gallery wraps.

You can also darken the wrap or add a solid color to the wrap area with the Overlay Color and Opacity sliders.

## EXPORT PRESETS

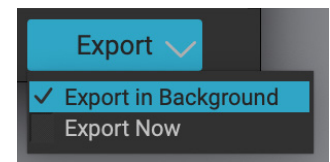
Presets remember all of the settings and details selected in the Export window pane. To save a group of settings as a preset, click the Save Preset button at the bottom of the panel. Give the preset a name, and it will appear in the Presets pop-up at the top of the Export panel.

**NOTE:** Unlike the paper presets in Resize, you can't export or import presets from the Export panel.

## EXPORTING OPTIONS

When your export settings have been set, you have two options for exporting, accessible via a pop-up in the Export button at the bottom of the pane:

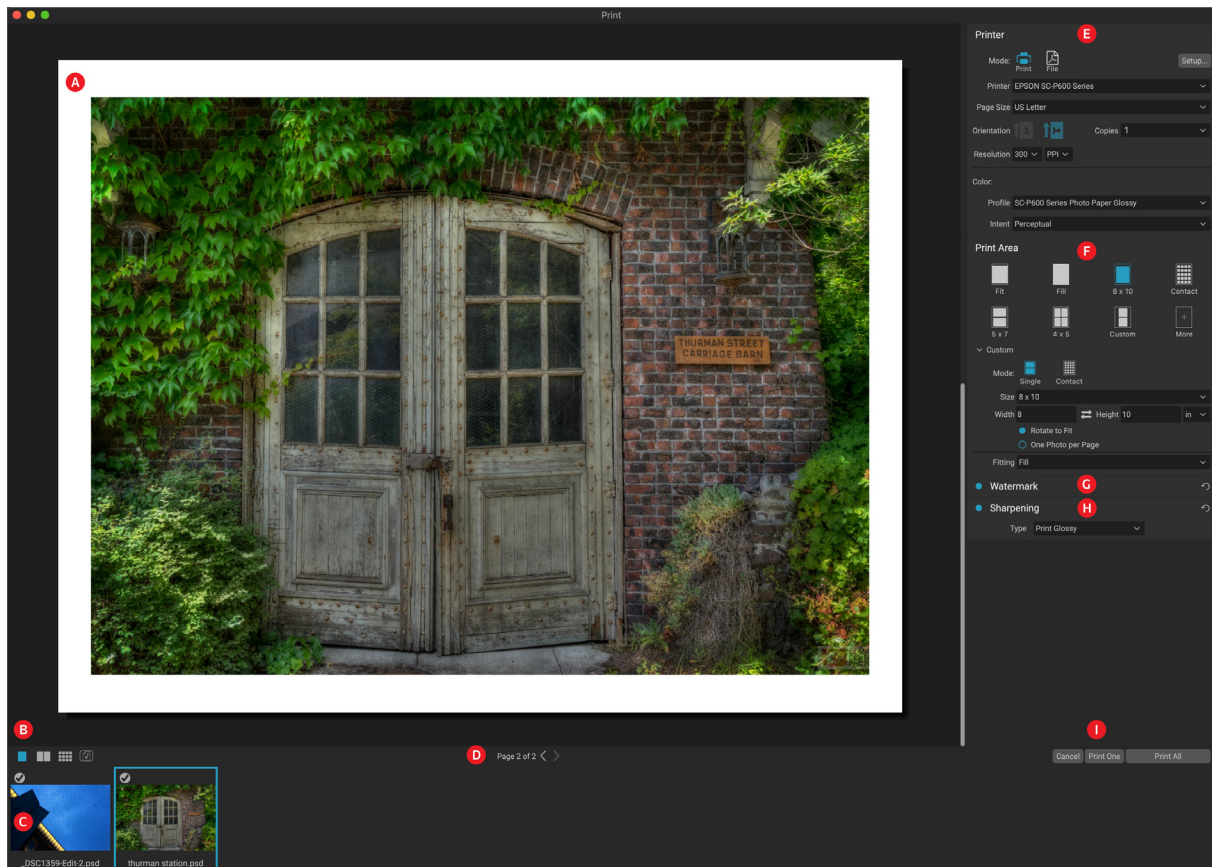
- **Export in the Background:** If you wish to keep working inside ON1 Resize during the export process, choose this option. It will take more time, since not all of the app's processing power will be dedicated to the export operation.
- **Export Now:** Choose this if you wish the export process to happen more quickly. You won't be able to work inside Resize until the exporting is done.



To get the options, press and hold your mouse button over the down arrow in the Export button at the bottom of the pane, then make your selection. If you just click the button without holding, the default is Export Now, although Resize will remember your last setting if you change it.

# Printing

ON1 Resize 2020 has a flexible print engine that can print photos at any size. You can print photos individually; multiple photos package style, on a single piece of paper; and contact sheets for evaluating images. You can print from any module, even when using Resize as a plug-in.



The print window can be opened by clicking on the Print icon in the module selector, or by selecting the Print command from the File menu. It has the following components:

- A. **Preview:** Displays the photo or photos being printed.
- B. **View Selector:** Lets you view the photos being printed individually, in facing-page view, or in grid view. The icon on the far right turns soft proofing on and off.
- C. **Filmstrip:** Shows all of the photos that have been selected for printing, with check marks to turn printing on or off. (The Filmstrip is not visible when a single image has been selected for printing.)
- D. **Page view:** Displays the number of pages being printed, and lets you move from page to page.
- E. **Printer pane:** Contains options for output—printer or PDF—as well as printer, page setup, page size, number of copies, resolution, and printer profile and rendering intent.
- F. **Print Area pane:** Contains options for fitting and selecting the print image size.
- G. **Watermark pane:** For adding a watermark to printed photos.
- H. **Sharpening:** Options for sharpening during the print process.
- I. **Print/Cancel:** Print One (current image), Print All, or Cancel.

The four panes in the Print window—Printer, Print Area, Watermark, and Sharpening—each deal with a specific printing-related task.

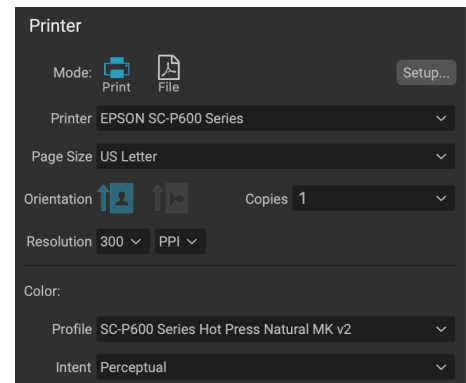
## PRINTER PANE

The Printer pane is where you set the printer-specific features for your output. It has two modes, which are chosen by clicking on the icon at the top of the pane: Print, which lets you print to a connected printer, and File, which will print the selection to a PDF.

When choosing to output to a printer, you'll set the specifics of your printer, the paper size you wish to print to, the resolution, orientation, and the number of copies. When choosing resolution, make sure that you are printing at the printer's optimal resolution. Most photo printers, for example, work best with a file that has between 240 and 360 ppi. (Resize will use its internal resampling engine to ensure that your photo is at the print resolution you choose.)

At the bottom of the pane is a section for choosing a printer-specific color profile; choose the media profile for the paper type you are printing to.

The rendering intent is related to the conversion of an image's colors to fit within the color range (or gamut) of the printer. The default intent, Perceptual, will change all of the colors in a photo proportionally to fit within the printer's range of colors. The other option, Relative Colorimetric will only change the colors out of the printer's gamut, to the closest in-gamut color. Depending upon the image, you might need to play with the intent settings, but Perceptual is usually the best place to start. (You can use Resize's Soft Proofing feature to look at out-of-gamut colors in your photos. See [“Soft Proofing in Resize”](#) on page 52 for more.)



*The Printer pane sets printer-specific options for the current print job. You can also choose to render the print job to a PDF file.*

**NOTE:** Resize's Print feature will work with borderless printing options as well. Be sure to choose your printer's borderless options in the page setup pop-up. Different printers will have specific borderless settings, so check the manual to see how to turn borderless printing on.

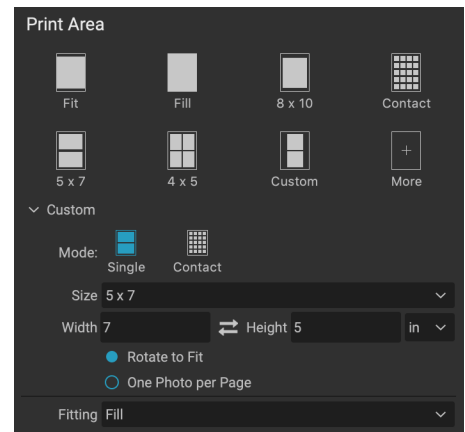
## Printing to a file

In addition to sending images to a printer, you can also choose to export the current print job to a file. This can be helpful if you are submitting prints to an online service or to print remotely. To use this option, click on the File icon at the top of the pane. Resize will ask you for a filename and a location to save the file. Choose a page size for the file from the Page Size pop-up, and adjust your print area settings. When you choose Print, Resize will create a PDF of the photo (or photos) and save it with the name and destination you specified earlier.

## PRINT AREA PANE

The Print Area pane is where you set the options for the size of the print, and how you wish your photos to be printed. You can also choose whether to print photos individually, package-style, or to create a contact sheet for evaluative purposes.

The top of the pane includes preset styles for either fitting the current photo inside the print size, or filling the entire print size; options for printing at common print sizes, including 8x10, 5x7, 4x6; and options for printing to a contact sheet. You can also create custom print sizes via the Custom section at the bottom of the pane; just set the width and height of the print size, and whether you wish to fit the image to the print size, or to fill the frame with it. If you would like to save this print size as a style, click on the More pop-up at the top of the pane, and choose Save as New Style from the menu. You'll then be able to recall that style from the More pop-up whenever you print.



*The Print Area pane is for setting the actual print size of the photo or photos you are printing.*

If you are printing multiple photos, Resize will attempt to put as many photos at your chosen print size on the paper size as defined in the Printer pane. To print only one photo per page, click that option at the bottom of the Print Area pane.

### Page size vs. print size

It's worth understanding the distinction between the page size and the print size. In some cases, the two will be identical. For example, if you wish to print on 4x6-inch photo paper, you would choose that option in the Printer pane's Page Size pop-up, and then 4x6 in the Print Area's Custom pop-up. Depending upon the aspect ratio of your photo, you then might need to choose Fit or Fill to get the proper crop. Fit does exactly what it sounds like: it will fit the entire photo within the bounds of the photo's dimensions, which means that there could be some extra white space around the final print. Fill will resize the photo to fill the dimensions of the chosen print size, centering the image.

In our example, a 4x6-inch print has an aspect ratio of 2:3. If the photo you are printing has that aspect ratio, then Fit and Fill do the exact same thing: the photo will fill the print area without any cropping.

For package printing, where you wish to generate multiple prints on a larger sheet of paper, you'll set the specific size paper you are printing to in the Printer pane, and then set the appropriate print size for each photo in the Print Area pane.

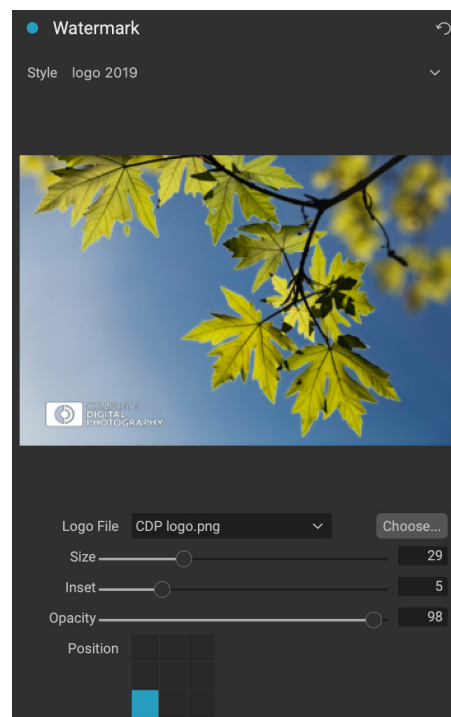
## WATERMARK PANE

The Watermark pane adds an overlay to the printed image, and is most often used for your logo, signature or copyright. Watermarks generally need a transparent background, so make sure your watermark file is a PNG or PSD.

The module has the following options:

- **Choose:** Click the Choose button to select the file you wish to use as your watermark. Once you've added a watermark file, it will be saved to the Logo File pop-up.
- **Size:** This slider controls the size of the watermark file.
- **Inset:** This will determine the percentage in which the file is inset from the edge, based on the Position (see below).
- **Opacity:** This sets the opacity of the watermark.
- **Position:** This grid sets the location of the watermark. Click on the square of the location you desire.

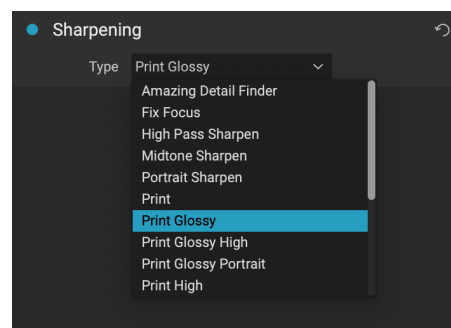
When working with watermarks, make sure your watermark file is sufficiently large for your usage. For example, if you want it to appear 2 inches wide on a 300-ppi image, your watermark needs to be at least 600 pixels wide. Otherwise, it could appear pixelated on the print.



## SHARPENING PANE

In most cases, and depending upon the media type you print to—glossy papers often benefit from additional sharpening, for example—you'll need to add an additional sharpening step when printing. This is an additional level of sharpening beyond anything you might have applied in the Edit module.

The Sharpening pane lets you select a type of sharpening that will be applied to your photos during the printing process. The pop-up menu has a set of options for general sharpening, including ones for a standard print, glossy papers, details, high-pass sharpening, and many more. Depending upon the image, you might need to play with the settings here; performing test prints on small sections of a photo can often be quite helpful in determining the proper level of sharpening in a print.



*Use the Sharpening pane to add additional sharpening to your printed image.*

## BASIC PRINTING WITH RESIZE

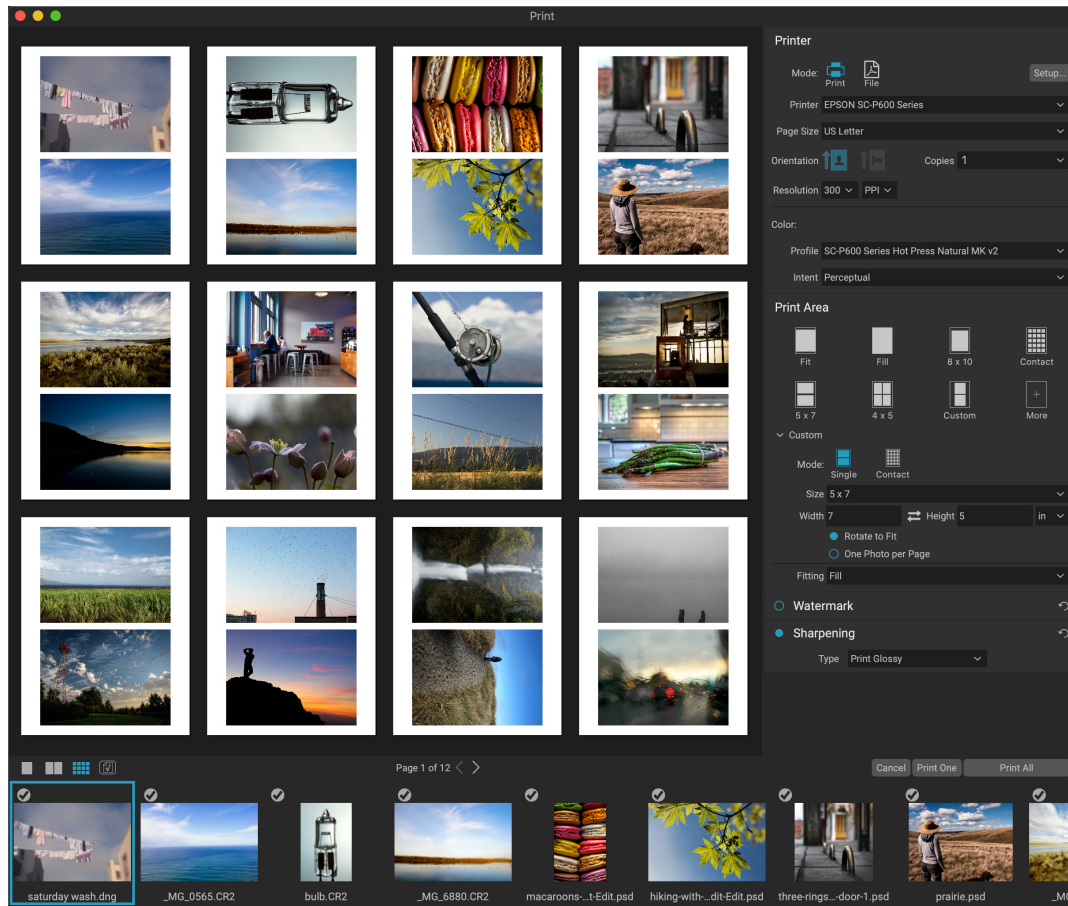
Printing is available throughout the ON1 Resize 2020 interface. If you are viewing a photo in either the Edit or Resize modules, or if you have an image selected in Browse's Grid or Detail views, clicking the Print icon will open the Print window with that image. There, you can set any of the options in the four panes on the right, and click the Print button to output your photo.



If you wish to get an on-screen proof of the final image before you print, using the chosen color profile for the media type you are using, click the soft proofing icon underneath the preview area.

## PRINTING MULTIPLE PHOTOS

To print multiple photos—as a package or contact sheet—select the images you wish to print from the Grid or Filmstrip views (in Browse or Edit), and click the Print icon. The photos you've selected will be displayed in the filmstrip at the bottom of the window, and the preview area will display the current page (at the printer's page size) and print size settings. If you are printing a lot of photos at one time, you can flip from page to page via the Page View buttons under the preview. To see more pages, click on the Facing Pages or Show All Pages icons at the bottom left of the window.



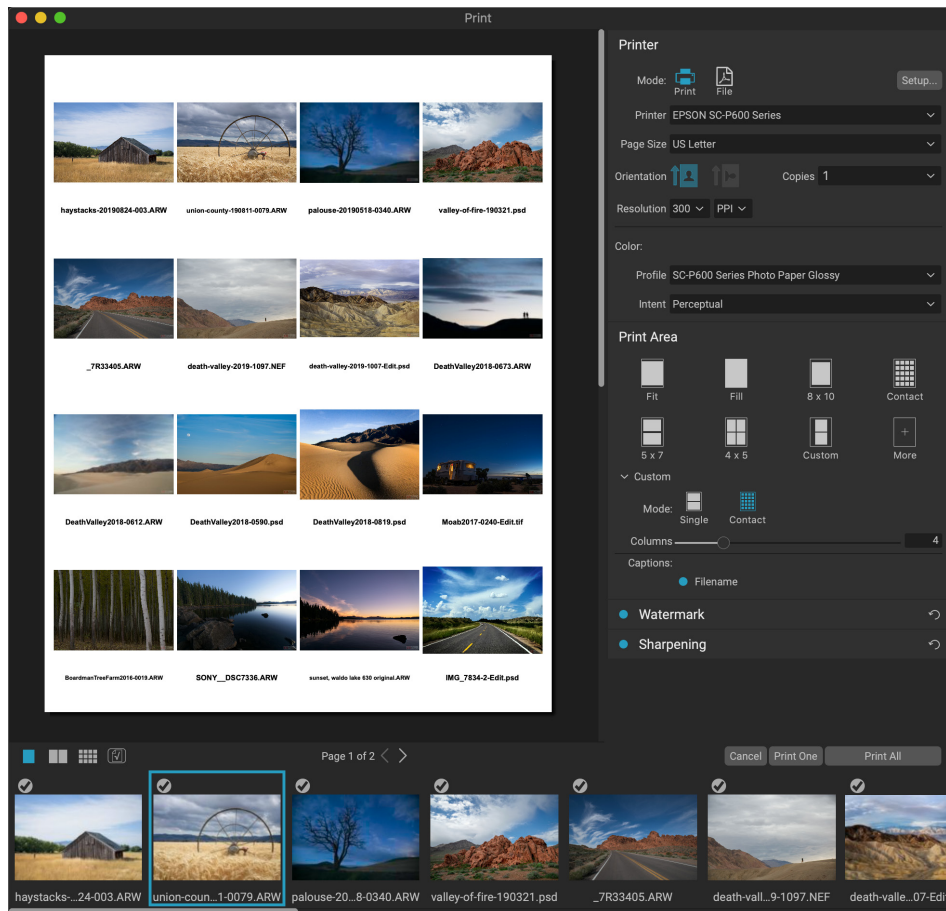
*The Print feature gives you extensive options for printing multiple pages package style. Here, we have selected 24 photos to print at 5x7 inches on a letter-size sheet, on an Epson P600 printer. Clicking on the View All Pages button underneath the preview window, you can see all of the photos to be printed. Clicking Print One will print the currently selected page; clicking Print All will print the collection.*

If you decide that you don't want to print a photo, click the checkmark for that photo in the filmstrip. To print all of the photos currently selected, click Print. If you would like to try a test print, with a single page, click on the Print One button, which will print the currently selected page, as found in the Page View listing.



## PRINTING CONTACT SHEETS

When you wish to evaluate a group of images but don't want to waste larger sheets of photo paper, use the Contact Sheet feature in the Print window. Select the photos you wish to print, set the paper size in the Printer pane, and click on the Contact icon in the Print Area pane.



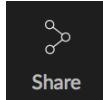
*The Contact Sheet option lets you evaluate a large group of photos in a high quality print, with captions.*

When you switch from Package to Contact mode, you have two options, as found in the Custom section of the Print Area pane:

- **Columns:** lets you set the number of columns across the page width. The smaller the number of columns, the larger the individual cells.
- **Captions:** Currently, Resize lets you add the filename as a caption underneath the printed photo. Click the button to the left of the label to turn this on or off. (We will be adding additional caption options in future releases.)

You can use the Page View controls underneath the preview area to move between pages, and, when you're ready to print, click the Print All button to print the contact sheets.

# Sharing to SmugMug



If you are a member of the SmugMug photo sharing and hosting service, ON1 Resize 2020 offers an easy to use mechanism for posting one or multiple photos to the service. This is accessed via the Share menu, which is found throughout Resize in the lower right section of the Module selector. On Windows, the Sharing button's pop-up contains only the SmugMug option; on MacOS, there are additional sharing options beyond SmugMug (see [page 69](#) for more information on these options).

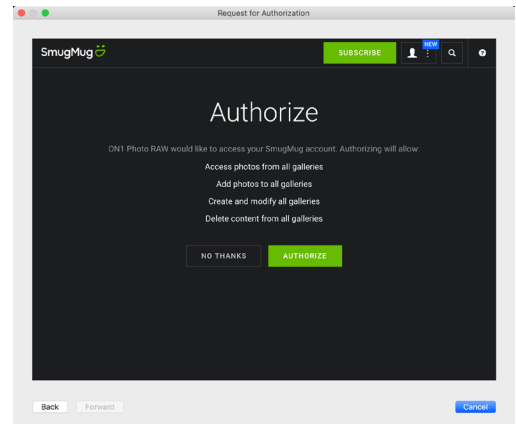
You can share a the currently selected photo or a group of photos by choosing SmugMug from the Sharing pop-up menu. The first time you access the service, you'll receive an authorization window inside Resize; fill out your account information and password, and then click on the Authorize button.

Once authorized, you'll be presented with a window that lets you upload your photo or photos. The window contains a handful of options:

- Click the “Use photo metadata” control to include the photos’ metadata for use in the title, caption and keyword.
- The Gallery pop-up lets you add the photos to an existing gallery, or lets you create a new gallery.
- The Open Gallery link to the left of the pop-up will open the currently selected gallery in your default web browser.
- The Size pop-up has three options, full-size, and either 4000 or 2000 pixels (on the long side).

Once you have selected the appropriate options, click the Share button. Resize will create high-quality JPEGs of the chosen photos and publish them to SmugMug.

More information about SmugMug can be found at [smugmug.com](http://smugmug.com).



*The first time you share to SmugMug, you'll be asked to log in to your account, and verify that you want to let Resize post to your galleries on the site.*



*When you post to SmugMug from Resize, you can include metadata, choose the gallery to you want the photos to go into, and the size of the uploaded photos.*

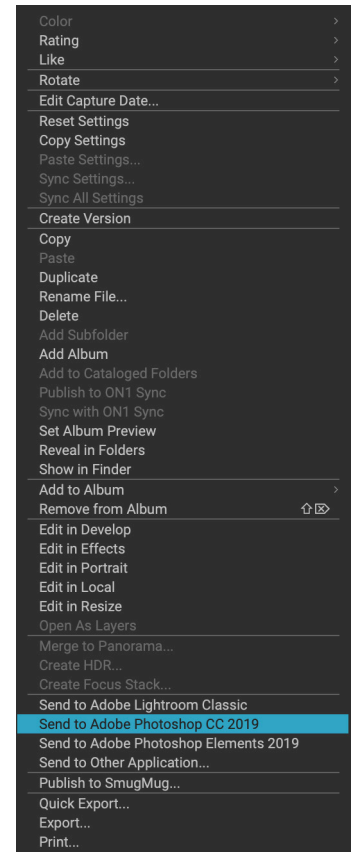
# Send to Other Applications

The Browse module inside ON1 Resize 2020 can send images you are viewing to other applications for editing. This is done via the Send to option, which is available from the right-click contextual menu or the Edit menu. ON1 Browse automatically detects the following common photo managers or editors and lists the latest installed version:

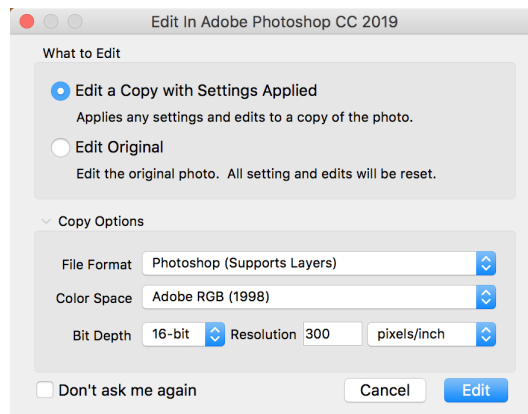
- Adobe Photoshop
- Adobe Photoshop Lightroom
- Adobe Photoshop Elements

You can set up any application you want to send your photos to. Simply select the Send to Other Application option. Then select the application you want to send your photos to. The application will be remembered and listed with your other Send to options. (For example, if you use an email client you can add it to easily email photos.)

When you send an image to another application, you will be presented with the Edit in dialog box from ON1 Resize 2020. There you'll have the option to send either the edited photo or the original, unedited image. If you choose to send a copy, you'll have options for choosing the file type, color space, bit depth and resolution. If you use the same set of options every time, you can check the "Don't ask me again" box in the window, and you won't be prompted again. (To change this setting, go to the File pane in Resize's Preferences.)



*The Send To... section is available when you right-click on a photo inside Browse pop-up menu.*



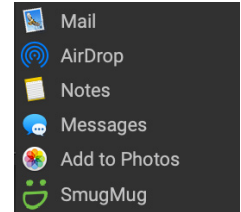
*The Edit In dialog, with the Copy Options section expanded.*

## Other Sharing Options (MacOS Only)



In addition to SmugMug publishing, the MacOS version of ON1 Resize 2020 includes other photo-sharing options, including:

- **Mail:** Creates a new email message in Apple Mail with the shared photo.
- **AirDrop:** Uses Apple's AirDrop networking feature to share with local MacOS or iOS devices.
- **Notes:** Adds the shared photo to Apple's Notes app. You can choose to create a new note, or add the photo to an existing note.
- **Messages:** Shares photo to Apple's Messages app.
- **Add to Photos:** Adds the photo to Apple's Photos app.
- **SmugMug:** Post photos to the SmugMug service (see [page 67](#) for details).



All of the sharing options perform the same operation: Resize exports a full-size JPEG of the selected photo and shares it with the selected target from the list.

**PART 5:**  
**ON1 RESIZE 2020 REFERENCE**  
**MENUS AND PREFERENCES**



# BROWSE MENUS

## ON1 Resize (MacOS Only)

- **About ON1 Resize 2020:** Opens the about box, displays your version number. (This is in the Help menu on Windows)
- **Preferences:** Opens the preferences dialog. (This item is in the Edit menu on Windows.)
- **Quit ON1 Resize 2020:** Quits ON1 Resize.

ON1 Resize 2020	
About ON1 Resize 2020	
Preferences...	⌘,
Services	▶
Hide ON1 Resize 2020	⌘H
Hide Others	⇧ ⌘H
Show All	
Quit ON1 Resize 2020	⌘Q

## File Menu

- **Browse Folder:** Opens the browse dialog where you can select which folder you would like to browse.
- **Browse Home:** Navigates to your home Pictures folder.
- **Browse Desktop:** Navigates to your desktop.
- **Add Cataloged Folder:** Lets you choose a folder to add to the Cataloged Folders section of the Folders pane.
- **Copy to My Catalogs:** Copy or move a group of selected photos to a specific cataloged folder.
- **Remove Cataloged Folder:** Removes the selected folder from the Cataloged Folders pane.
- **Manage Extras:** Opens the Extras Manager for importing and exporting backgrounds, presets, textures andt more.
- **Quick Export:** Saves the current image in Photoshop, TIFF, JPEG or PNG format.
- **Resize Single Image:** Opens the selected file in Resize's Single Image mode.
- **Send to (list):** Sends your image to the selected application in the list.
- **Group RAW Plus JPG:** Stacks RAW and JPG pairs together, reducing clutter.
- **Export:** Opens the Export side panel.
- **Print:** Opens up the print window.

File	
Browse Folder...	⌘B
Browse Home	
Browse Desktop	
Add Cataloged Folder...	
Copy to My Catalogs...	
Remove Cataloged Folder...	
Manage Extras...	
Quick Export...	⇧ ⌘S
Resize Single Image...	
Send to Adobe Lightroom Classic	
Send to Adobe Photoshop 2020	
Send to Aperture	
Send to QuickTime Player	
Send to Other Application...	
Group RAW Plus JPG	
Export...	
Print...	⌘P

## Edit Menu

- **Undo:** Removes the last file operation.
- **Redo:** Redoes the undo operation. This is only available if the last thing you did was an undo.
- **Select All:** Selects all the images in the current folder.
- **Select None:** Deselects all the images in the current folder.
- **Deselect:** Deselects the current item.
- **Copy:** Copies the currently selected items.
- **Paste:** Pastes the items in the clipboard to the current location.
- **Duplicate:** Makes a physical copy of the selected file, in the same location as the original.
- **Rename Files:** Renames the selected file or folder.
- **Delete:** Moves the selected files and/or folders to the trash.
- **Add Subfolder:** Adds a new empty subfolder inside the current selected folder.

Edit	
Undo	⌘Z
Redo	⇧⌘Z
Select All	⌘A
Select None	⌘D
Deselect	/
Copy	⌘C
Paste	⌘V
Duplicate	
Rename File...	
Delete	⌘⌫
Add Subfolder	

## Album Menu

- **Create Album:** Creates a new Album.
- **Rename Album:** Renames selected Album.
- **Delete Album:** Deletes selected Album.
- **Add to Album:** Add selected photos to available Albums.
- **Remove from Album:** Removes selected photo(s) from Album.

Album	
Create Album...	
Rename Album...	
Delete Album	
Remove from Album	⇧⌘⌫

## Photo Menu

- **Color:** Sets the color rating of a photo (None, Red, Yellow, Green, Red, Purple)
- **Rating:** Sets star rating (0 to 5 stars)
- **Like:** Sets a photo to Like, Reject or Not Set
- **Auto Advance:** When checked, any color, rating or like setting applied to a photo will save it for that photo, then move on to the following photo.
- **Rotate 90 Degrees CW:** Rotates an image clockwise by 90°
- **Rotate 90 Degrees CCW:** Rotates an image counterclockwise by 90°
- **Edit Capture Date:** Let's you adjust the date captured metadata, including a setting to take account for time zone changes.
- **Set Location from GPS Coordinates:** Looks up the place name information from the stored GPS coordinates and embeds it in the appropriate IPTC metadata fields.
- **Embed Metadata:** Stores adjusted metadata to the selected photo. (Only applicable to certain file formats.)
- **Read Metadata from Photo:** Reads the embedded metadata from a raw file, overwriting any data that might be in the XMP sidecar files. (Useful for times when the metadata appears out of sync with different apps.)
- **Save Metadata Preset:** Lets you save some or all of the current image's metadata fields as a preset.
- **Delete Metadata Preset:** Lets you delete a saved metadata preset.
- **Refresh Preview:** Rebuilds the preview of the selected images. (Helpful if there are issues that are causing an image to display incorrectly.)

Photo	
Color	►
Rating	►
Like	►
Auto Advance	
Rotate 90 Degrees CW	⌘]
Rotate 90 Degrees CCW	⌘[
Edit Capture Date...	
Set Location from GPS Coordinates	
Embed Metadata	
Read Metadata from Photo	
Save Metadata Preset...	
Delete Metadata Preset...	
Refresh Preview	

## View Menu

- **Bigger Thumbnails:** Increases the size of the thumbnails in Grid view.
- **Smaller Thumbnails:** Decreases the size of thumbnails.
- **Zoom In:** Zooms into your image in Detail, Filmstrip or Compare view, displaying more detail.
- **Zoom Out:** Zooms out, fitting more of your image in the window.
- **Fit to Screen:** Resizes your image on-screen, to fit it entirely in the preview window.
- **Actual Pixels:** Zooms in to the 100% view of your image.
- **Square Thumbnails:** Changes your thumbs to square.
- **Always Show Filename:** Keeps the filename label turned on in the thumbnails while in Grid view.
- **Enable Advanced Search:** Enables/Disables the Advanced Search pane.
- **Search Text:** Places the cursor in the Advanced Search text box.
- **Search by Label:** Filters images by color.
- **Search by Rating:** Filters images by star rating.
- **Search by Likes:** Filters images by likes/dislikes.
- **Reset Advanced Search:** Resets any filters in the Advanced Search pane.
- **Sort:** Sort by filename, date, rating, label and more.
- **Sort Subfolders at the Top:** When sorting, puts subfolders at the top of the grid.
- **Show Clipping:** Displays the clipping overlay view, displaying the pure white or black pixels in the current image.
- **Show Focus Mask:** Displays a green overlay on those portions of the current image that are in focus.
- **View Mode:** Select from Thumbnail (grid), Photo (detail), Filmstrip or Compare views.
- **Preview Background Color:** Change the preview background color.

View	
Bigger Thumbnails	+
Smaller Thumbnails	-
Zoom In	⌘+
Zoom Out	⌘-
Fit to Screen	⌘0
Actual Pixels	⌘⇧0
Square Thumbnails	
Always Show Filename	
Enable Advanced Search	⌘L
Search Text	⌘F
Search by Label	▶
Search by Rating	▶
Search by Likes	▶
Reset Advanced Search	⇧⌘L
Sort	▶
Sort Subfolders at the Top	
Show Clipping	⌘J
Show Focus Mask	⌘⇧J
View Mode	▶
Preview Background Color	▶

## Window Menu

- **Minimize:** Minimizes ON1 Resize 2020.
- **Zoom:** Zooms your window.
- **Full Screen Mode:** Enters or exits full-screen mode.
- **Dual Mode:** Adds new browser window for use in a second display.
- **Folders:** Opens and hides the Folders pane.
- **Albums:** Opens and hides the Album pane.
- **Advanced Search:** Opens/hides the Advanced Search pane.
- **Recent:** Opens and hides the Recent pane.
- **Info/Navigator:** Open and hides the Info pane.
- **Metadata:** Open and hides the Metadata pane.
- **Keyword List:** Opens and hides the Keyword List pane.
- **Show Browse Panel:** Hides/reveals the left-side Browse Panel.
- **Show Bumper Labels:** Hides/reveals the text labels in the module selector.
- **Show Photo Panel:** Hides/reveals the right-side Photo Panel.
- **Hide Panels:** Hides/reveals both left and right panels.

Window	
Minimize	
Zoom	
Full Screen Mode	⌘F
Dual Mode	▶
Folders	⌘2
Albums	⌘3
Advanced Search	⌘4
Recent	⌘6
Info/Navigator	⌘7
Metadata	⌘8
Keyword List	⌘9
✓ Show Bumper Labels	
✓ Show Browse Panel	⌘←
Show Photo Panel	⌘→
Hide Panels	⇧⌘I

## Help

- **Search:** Searches the menu options (MacOS only).
- **ON1 Resize 2020 Online Help:** Opens ON1.com support page in your default web browser.
- **Video Tutorials:** Opens ON1.com product training page in your default web browser.
- **Getting Started:** Opens the initial Resize startup screens.
- **Check for Updates:** Checks the ON1 update server to see if you are running the current version; it notifies you about updates and will walk you through the update process.
- **Sign-In/Sign-Out:** Uses your ON1 account login information to authenticate your copy of ON1 Resize 2020.
- **Provide Feedback:** Opens the default web browser and goes to the feedback page of the ON1 website.
- **About ON1 Resize 2020 (Windows Only):** Opens the about box with the version number displayed.
- **Help Improve ON1 Products:** Opens the Improve ON1 Products dialog.
- **Show ON1 Log:** Diagnostic tool that can help ON1 support when you're having issues with ON1 Resize 2020.

Help	
Search	
ON1 Resize 2020 Online Help...	
Video Tutorials	
Getting Started...	
Check for Updates	
Sign-In...	
Provide Feedback...	
Help Improve ON1 Products...	
Show ON1 Log	



# RESIZE MENUS

## ON1 Resize (MacOS Only)

- **About ON1 Resize 2020:** Opens the about box, displays your version number. (This is in the Help menu on Windows)
- **Preferences:** Opens the preferences dialog. (This item is in the Edit menu on Windows.)
- **Quit ON1 Resize 2020:** Quits ON1 Resize.

ON1 Resize 2020		
About ON1 Resize 2020		
Preferences...	⌘,	
Services		▶
Hide ON1 Resize 2020	⌘H	
Hide Others	⇧⌘H	
Show All		
Quit ON1 Resize 2020	⌘Q	

## File Menu

- **Done:** Saves the current image and returns to Browse (or external source).
- **Cancel:** Cancels any Resize operations and returns to Browse (or external source).
- **Quick Export:** Saves the current image in Photoshop, TIFF, JPEG or PNG format
- **Export:** Calls up the Export pane.
- **Print:** Opens up the print dialog box.
- **Manage Extras:** Opens the Extras Manager window.

File		
Done	⌘↵	
Cancel	⌘⌫	
Quick Export...		
Export...		
Print...	⌘P	
Manage Extras...		

## Edit Menu

- **Undo:** Removes the last file operation.
- **Redo:** Redoes the undo operation.
- **Cut:** Cuts the currently selected item.
- **Copy:** Copies the currently selected item.
- **Paste:** Pastes the items in the clipboard.
- **Preferences (Windows):** Opens the Preferences dialog.

Edit		
Undo	⌘Z	
Redo	⇧⌘Z	
Cut	⌘X	
Copy	⌘C	
Paste	⌘V	

## Settings Menu

- **Reset all Settings:** Resets any settings made in Resize.
- **Reset Resize Settings:** Resets any changes made in the Settings pane.
- **Reset Crop:** Resets the crop.
- **Save Settings as Preset:** Saves the current Resize settings as a preset.
- **Update Preset with Current Settings:** If an image with a preset applied has had some settings changed, this lets you update the preset to reflect those new settings.
- **Rename Preset:** Renames the current preset.
- **Delete Preset:** Deletes the currently selected preset.
- **Export Preset:** Exports the current preset as an .onresize file.
- **Import Preset:** Imports ON1's Presets page in your web browser.

### Settings

Reset All Settings	⇧ ⌘ R
Reset Resize Settings	
Reset Crop	
Save Settings as Preset...	
Update Preset with Current Settings...	
Rename Preset...	
Delete Preset	
Export Preset...	
Import Preset...	
Get More Presets...	

## View Menu

- **Zoom In:** Zooms the preview window in one increment. This will make the preview image larger.
- **Zoom Out:** Zooms the preview window out one increment. This will make the preview images smaller.
- **Fit to Screen:** This sets the preview image so that the entire image is on screen at once. Think of this as an overview of the entire image. This is the setting you will use most of the time.
- **Actual Pixels:** This sets the preview image so that it zooms to actual pixels or 1:1 also called 100%. This setting allows you to see every pixel in the image. This is useful when making precision adjustments.
- **Show Clipping:** Shows the clipping overlay view, displaying the pure white or black pixels in the current image.
- **Preview Background Color:** Lets you set the background color options.
- **Enable Soft Proofing:** Turns on soft proofing.
- **Gamut warning:** Displays colors that the printer can't reproduce with a red overlay.
- **Profiles:** Displays a list of installed printer and display profiles; selecting a profile will apply soft proofing for that profile.
- **Intent:** Lets you switch between perceptual or relative rendering intent for the current image.
- **Simulate Paper and Ink:** When turned on, Resize will set the white point and black point of the display to account for that of the chosen profile.

### View

Zoom In	⌘ +
Zoom Out	⌘ -
Fit to Screen	⌘ 0
Actual Pixels	⇧ ⌘ 0
Show Clipping	⇧ ⌘ J
Preview Background Color	▶
Enable Soft Proofing	⇧ ⌘ S
✓ Gamut warning	
Profiles	▶
Intent	▶
✓ Simulate Paper and Ink	

## Window

- **Minimize:** Minimizes your screen.
- **Zoom:** Zooms your window to full-size (doesn't hide menu bar).
- **Full Screen:** Toggles to and from full-screen mode (hides menu bar).
- **Navigator/Loupe/Histogram:** Hides or shows the Navigator, Loupe, Histogram (Levels) and Info pane.
- **Pixel Dimensions:** Opens or closes the Pixel Dimensions pane.
- **Document Size:** Opens or closes the Document Size pane.
- **Sharpening:** Opens or closes the Sharpening pane.
- **Film Grain:** Opens or closes the Film Grain pane.
- **Tiling:** Opens or closes the Tiling pane.
- **Gallery Wrap:** Opens or closes the Gallery Wrap pane.
- **Solo Mode:** When enabled, this feature keeps only one control pane open at a time.
- **Open Quick View Browser:** *[unused]*
- **Show Browser Panel:** Hides/shows the left Browser panel.
- **Show Control Panel:** Hides/shows the right Control panel.
- **Hide Panels:** Hides or shows all Panels.
- **Document Name:** Shows the name of the open image.

Window	
Minimize	⌘M
Zoom	
Full Screen	⌘F
Navigator	⌘1
Pixel Dimensions	⌘2
Document Size	⌘3
Sharpening	⌘5
Film Grain	⌘6
Tiling	⌘7
Gallery Wrap	⌘8
Solo Mode	
Open Quick View Browser	⌘↑
Show Browser Panel	⌘←
✓ Show Control Panel	⌘→
Hide Panels	⌘⇧H
boardman-2018-aerial copy.psd @ 100% 16-bit	

## Help

- **Search:** Searches the menu options (MacOS only).
- **ON1 Resize 2020 Online Help:** Opens ON1.com support page in your default web browser.
- **Video Tutorials:** Opens ON1.com product training page in your default web browser.
- **Getting Started:** Opens the initial Resize startup screens.
- **Check for Updates:** Checks with the ON1 update server to see if you are running the current version. If there is a newer version, you will be notified and be walked through the update process.
- **Sign-In/Sign-Out:** Uses your ON1 account login information to authenticate your copy of ON1 Resize 2020.
- **Provide Feedback:** Opens the default web browser and goes to the feedback page of the ON1 website.
- **About ON1 Resize (Windows Only):** Opens the about box with the version number displayed.
- **Help Improve ON1 Products:** Opens the Improve ON1 Products dialog.
- **Show ON1 Log:** Diagnostic tool that can help ON1 support when you're having issues with ON1 Resize 2020.

Help	
Search	<input type="text"/>
ON1 Resize 2020 Online Help...	
Video Tutorials	
Getting Started...	
Check for Updates	
Sign-In...	
Provide Feedback...	
Help Improve ON1 Products...	
Show ON1 Log	

# PREFERENCES

ON1 Resize 2020 has a number of system-wide settings that you can set via the Preferences window. To access Preferences, either click on the gear icon at the lower left side of the screen, or choose Preferences from the ON1 Resize 2020 menu (MacOS) or the Edit menu in Windows.

The Preferences window has five tabs: General, Files, Plug-Ins, System, Services. The settings in each tab are described below.

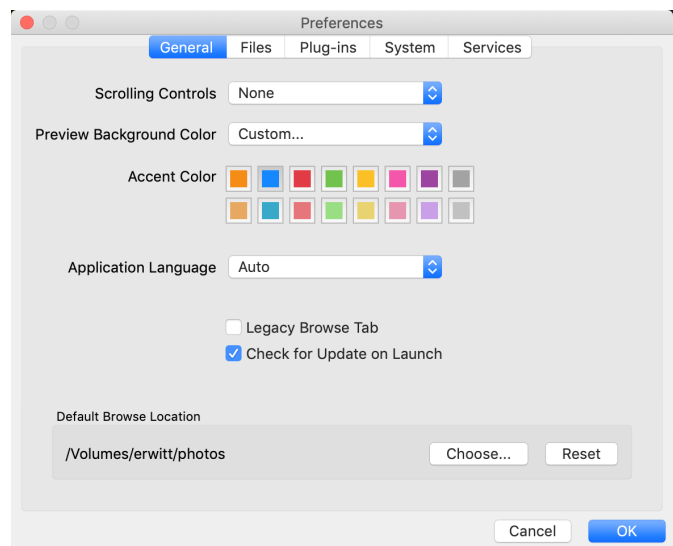
## GENERAL SETTINGS

The General settings tab adjusts basic settings for the Resize workspace, including background color, scrolling controls and more.

### Scrolling Controls

Lets you select how the mouse scroll wheel or scrolling gesture works. The options are:

- **None:** Default.
- **Preview Zoom:** Adjusts the zoom of the preview window. Scrolling up increases the zoom, scrolling down decreases the zoom.
- **Preview Pan:** Pans the image, like using the pan tool or navigator. It is important that the panning is comfortable, not too fast or slow or jerky.
- **Brush Size:** Adjusts the size of the current tool if relevant, such as a brush tool.



### Preview Background Color

You may select the color of the background behind the preview image. The default color is black. There is options for black, white, light gray, dark gray and custom. The custom option has a color picker where you can select your own background color.

### Accent Color

Lets you choose the display color for highlighted items (folders, tabs, selections) in the Resize interface.

### Application Language

Lets you change the display language for ON1 Resize 2020. Auto will use your system's default language (if available).

## Legacy Browse Tab

Checking this will change the separate My Catalogs and Browse panels to the single Browse panel found in earlier versions of ON1 Resize. (See [“My Catalogs and Browse Panels”](#) on page 14.)

## Check for Update on Launch

Enabled by default, the product will communicate with ON1's software update server when you start ON1 Photo; if an update is available it will prompt you to download or skip.

## Default Browse Location

By default, the Pictures short cut in Browse is either Pictures (Mac) or My Pictures (Windows). You can change that location via this setting.

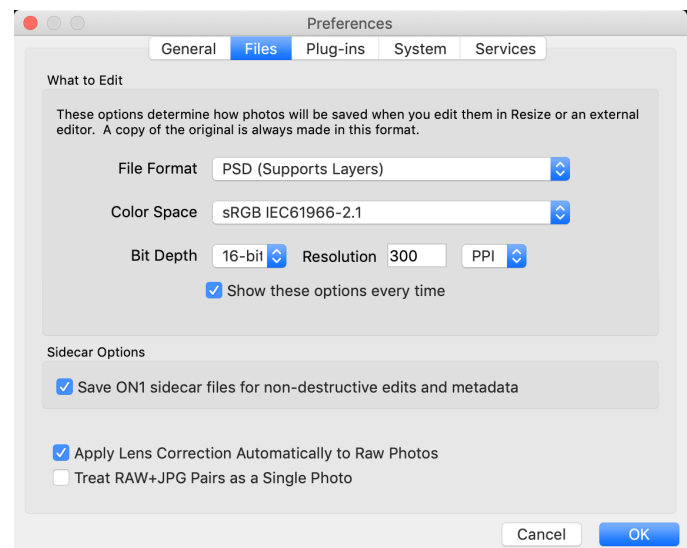
## FILES

The Files tab is used to determine what file type ON1 Resize will create when opening a file in Resize, or when creating copies to send to an external editor from within Browse.

### What to Edit

There are five options in this tab:

1. **File Format:** Sets the file type you wish to create: PSD, TIFF, or JPEG. If you wish to use a layered workflow, you must choose PSD.
2. **Color Space:** Sets the default color space when opening a copy of a file; the list includes Adobe RGB 1998, Apple RGB (MacOS), sRGB, ProPhoto RGB, or ColorMatch RGB. (If you imported a profile for use in the General preferences, it will also be available here.)
3. **Bit Depth:** Sets the bit depth for the file when opening a copy of a file.
4. **Resolution:** Sets the resolution when opening a copy of a file.
5. **Show these options every time:** If you do not wish to use a predefined set of file characteristics for opening photos from Lightroom or Photoshop, click this box.



### Sidecar Options

Click this box if you wish ON1 Resize 2020 to create ON1-specific 'sidecar' files when you are editing images. This is helpful if you are using the same image library with multiple computers (on an external hard drive, for example), and want your edits to be visible on each machine.



## Apply Lens Correction Automatically

With this option on, ON1 Resize will use the lens correction automatically on any raw photo when you view it in Detail, Filmstrip or Compare modes.

## Treat RAW+JPG Pairs as a Single Photo

If you shoot RAW+JPG, you can use this option to 'stack' both photos inside Browse. (RAW+JPG pairs are shown with a small icon in the lower left corner of the thumbnail.)

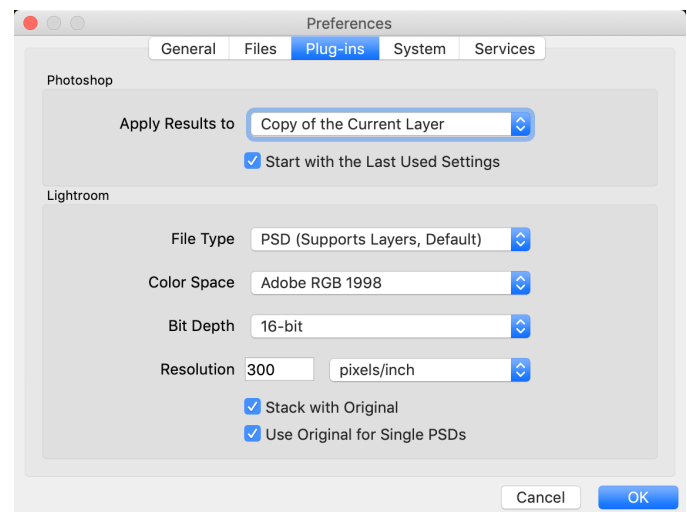
## PLUG-INS

The Plug-Ins tab is specific to using Resize as a plug-in for Photoshop or Lightroom, and lets you set up conditions when opening files from these apps.

### Photoshop

Since Resize works on the complete composite image (with layers), the Photoshop option is not applicable.

### Lightroom



This preference lets you choose the specific options for files opened via the Plug-In Extras menu in Lightroom:

- **File Type:** The file type drop-down menu determines what type of file will be created. The default is PSD, which maintains layers. You can also select JPG or TIFF if you prefer those formats and are not concerned about maintaining layers. The last option is same as source, which maintains the file type of the original file, except for Lightroom raw files, which are saved as PSDs.
- **Color Space:** Sets the working color space; Adobe RGB, sRGB or ProPhoto RGB.
- **Bit Depth:** Sets the file bit depth, either 8-bit or 16-bit per pixel.
- **Resolution:** The resolution drop-down menu determines the resolution of the file.
- **Stack with Original:** When enabled, the new image is stacked with the original image.
- **Use Original for Single PSDs:** When enabled, if you select a single PSD file, it will be edited directly, rather than having a copy made.

## SYSTEM

The System tab displays performance-related characteristics of Resize 2020.

### Memory Usage

- **System Usage:** Specifies the amount of RAM that is used by the application. The maximum (default value) is 80%.
- **VRAM Usage:** Specifies the amount of video memory (VRAM) that is used by the application. The maximum (default) is 80%.

### Scratch Folder Location

This setting lets you move or reset your memory cache, which helps speed editing operations while you're running Resize. This is helpful if your system drive has limited space and wish to use a faster external drive as a cache. This cache information is purged each time you quit the application.

### Browse Cache

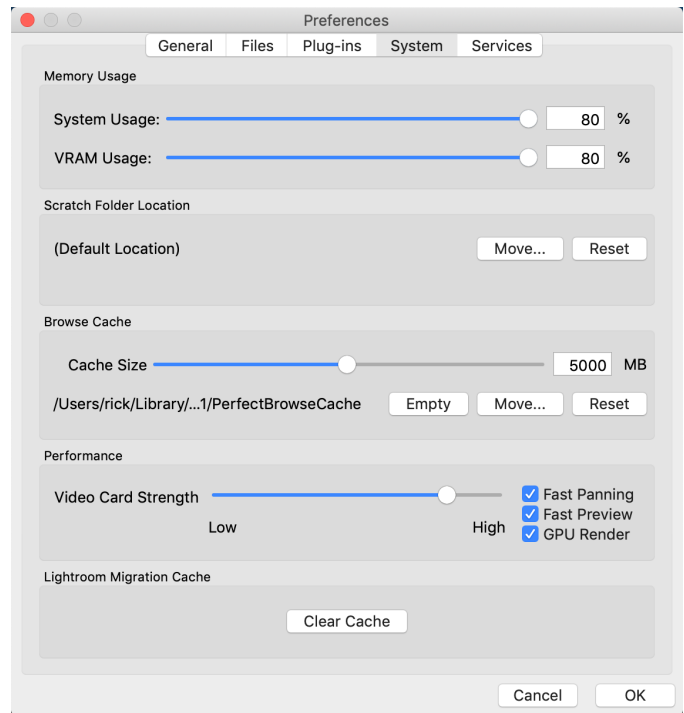
ON1 Resize 2020 stores thumbnails previews on disk so that the next time you browse a folder it loads much faster. This setting lets you adjust the memory cache size as well as empty the cache, move it to another location, or reset it if you are having issues with Browse.

**TIP:** If you have a small solid-state drive as your boot volume, you should move your cache to another drive, since the Browse cache can take up a lot of space when you are using cataloged folders.

### Performance

The Performance section is designed to help you optimize Resize for your specific setup. The adjustments you can make are as follows:

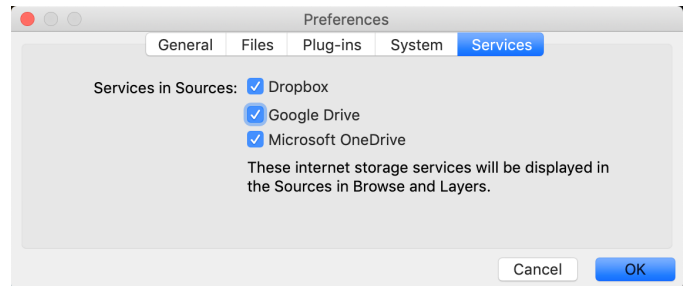
- **Video Card Strength** balances updating the preview of the image and the movement of brushes and gradient tool overlays. If your brush is sticking try turning it down. If you have a high-end video card try turning it up for faster preview updating.
- **Fast Panning** reduces the preview quality (makes it less sharp) while panning the photo to improve performance of panning.



- **Fast Preview** reduces the preview quality (makes it less sharp) while painting or making other adjustments to improve paintbrush performance. This is off if you have a high-end video card.
- **GPU Render** uses the GPU (video card) to render preset thumbnails, exporting, printing, sharing and caching. This can greatly improve performance. It is on by default for systems that support it. It may be disabled on lower-end GPUs.

## SERVICES

This tab controls which online storage services are displayed in the Sources pane in Browse and Layers. Currently, ON1 Resize 2020 supports Dropbox, Google Drive, and Microsoft OneDrive. Resize 2020 will automatically add any of the services if finds them on your computer during the installation process, but if you add (or remove) any of these services later, use this tab to manage them.





## ON1 Resize 2020 User Guide

©2016-2020 ON1 Inc.

*Revision 1.0, April 2020 (Version 2020.0)*

© 2006-2020 ON1 Inc. This document and the software described in it are copyrighted with all rights reserved. ON1, onOne and the onOne logo are trademarks of ON1, Inc. Apple, Macintosh and MacOS are trademarks of Apple, Inc. Microsoft, Windows are trademarks of Microsoft, Inc. Adobe, Photoshop, Lightroom Classic and Photoshop Elements are trademarks of Adobe, Inc. Kodak is registered trademarks of Eastman Kodak, Inc. Fuji and Fujifilm are registered trademarks of Fujifilm, Inc. Ilford is registered trademarks of Harman Technologies, Inc. ON1 is not associated with these companies. All other trademarks are the property of their respective owners. The activation system used by ON1 Inc. is licensed under Patent No. 5,490,216. For a full list of license disclosures view the LICENSE.TXT file installed with the software.