

**ON1 Plus Editing Guide**



# **SUNSET PORTRAIT**

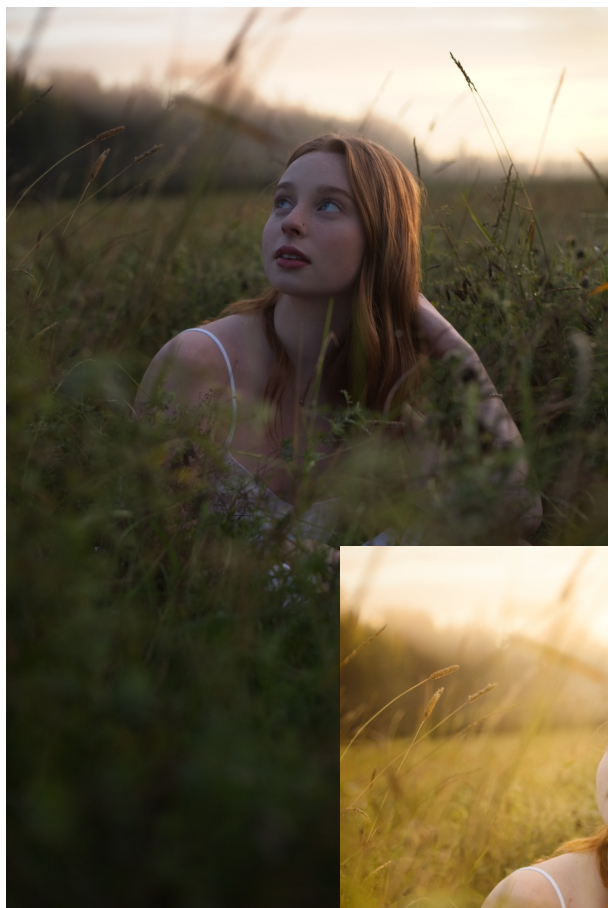
ON1 Plus Editing Guide

# HOW TO EDIT A SUNSET PORTRAIT

## **About These Editing Guides**

These step-by-step editing guides are designed to help you edit your photos using ON1 Photo RAW with confidence and clarity. Each guide walks you through the editing process one step at a time, allowing you to follow along at your own pace.

Whether you're brand new to editing or just want a refresher, these guides show you what tools to use, why you're using them, and how each step improves your image. You can keep the steps in front of you as you work, making it easy to learn and build good editing habits with purpose and understanding.





# SUNSET PORTRAIT

In this Sunset Portrait editing guide, we're enhancing a golden hour portrait to bring out the natural warmth, soft light, and dreamy atmosphere that make sunset photos so compelling. You'll walk through each step to brighten the subject, warm up the tones, add flattering light to the face, and introduce subtle creative effects like a glowing hair light and a soft sun flare. The goal is to create a polished, professional-looking portrait that feels natural and glows with the light of the setting sun — all while learning how and why each adjustment makes an impact.

## SUNSET PORTRAIT

# LETS GET STARTED!

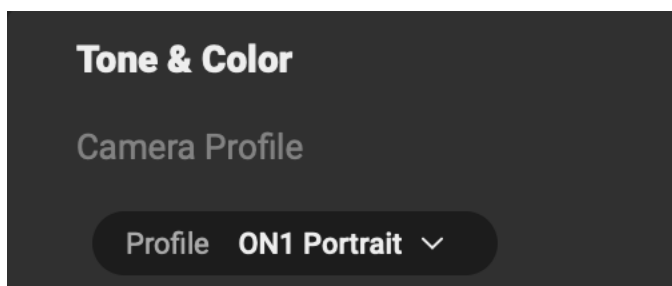
Follow along with these steps to create the edit.

### 1. Apply the ON1 Portrait Camera Profile

In the Develop tab, we're going to start by applying a camera profile.

- Head to the Camera Profile section near the top of the Develop tab.
- Choose ON1 Portrait from the dropdown.

This is going to brighten the entire image, especially the darker regions, so your subject doesn't look underexposed. It gives us a better base to work from.



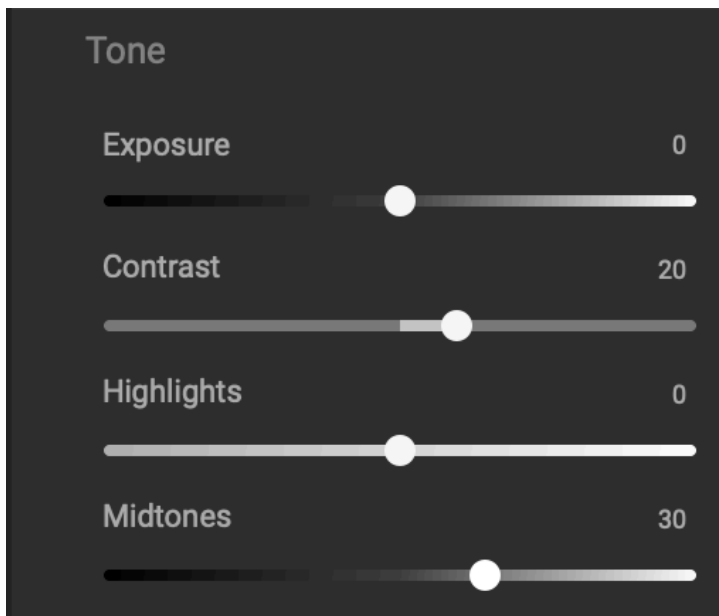
## 2. Add Some Contrast and Brightness

Still in the Develop tab, let's open the Tone & Color pane.

Here, we're going to make a few adjustments:

- Set Contrast to +20
- Set Midtones to +30

These settings will help make the photo look more dynamic and ensure it's not flat. It also gives us a nice, bright starting point for the rest of the edits.

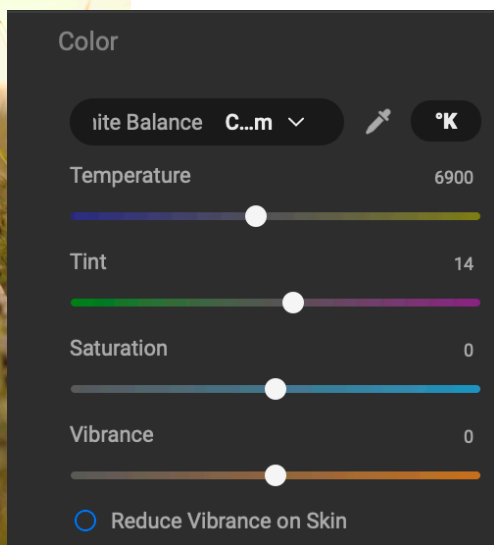
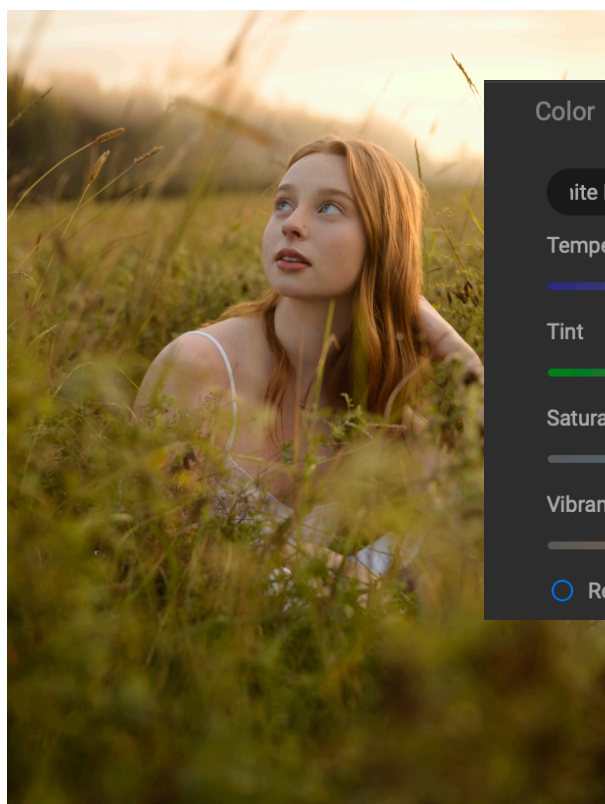


### 3. Warm Up the Temperature

Next, let's add that warm, golden feel that matches the sunset.

- In the Temperature slider (still in the Tone & Color section), move it to 6900.

This warms the image up and gives it that classic sunset glow — great for portraits taken in golden hour light.



## **4. Light Up the Subject with a Local Adjustment**

Now we'll go into the Local tab to make the subject pop a little more.

- Click and hold down the "Add Adjustment" button to bring up the Apply To menu.
- Choose People, make sure Paint is turned on, and choose Apply.

This will target your subject automatically.

- By default, Local Adjustments darken the image — but we're going to change that.
- In the Styles section of the Local Adjustment, go into the More menu and choose Midtones +.

This will brighten the skin tones in a natural way without making things look overexposed.

- Now lower the Opacity of the Local Adjustment to around 20.

This keeps the adjustment subtle so your subject stands out from the background, but still looks natural.

Adjustment

Opacity

Opacity

20

Styles

Lighten

Darken

Vibrance

Detail

More

Tone

Exposure

0

Contrast

0

Highlights

0

Midtones

30





## 5. Add a Dreamy Glow to the Hair Using Super Select AI

Now let's add a soft, glowing effect to the subject's hair.

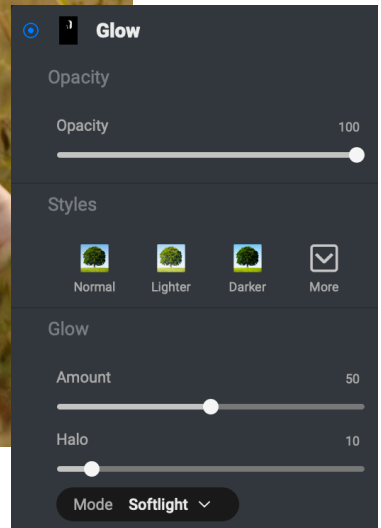
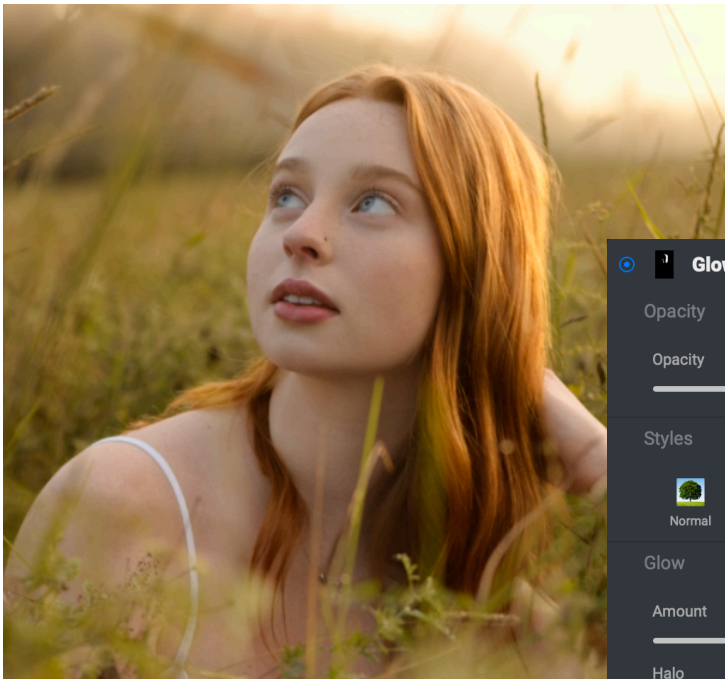
- Grab the Super Select AI Tool (press K).
- Hover your cursor over the subject's hair — it should show a blue overlay, meaning it detected the hair area.



Once the hair is selected:

- Secondary-click (right-click or Control-click) and choose the Glow filter.
- In the popup style menu, select Rich Glow.

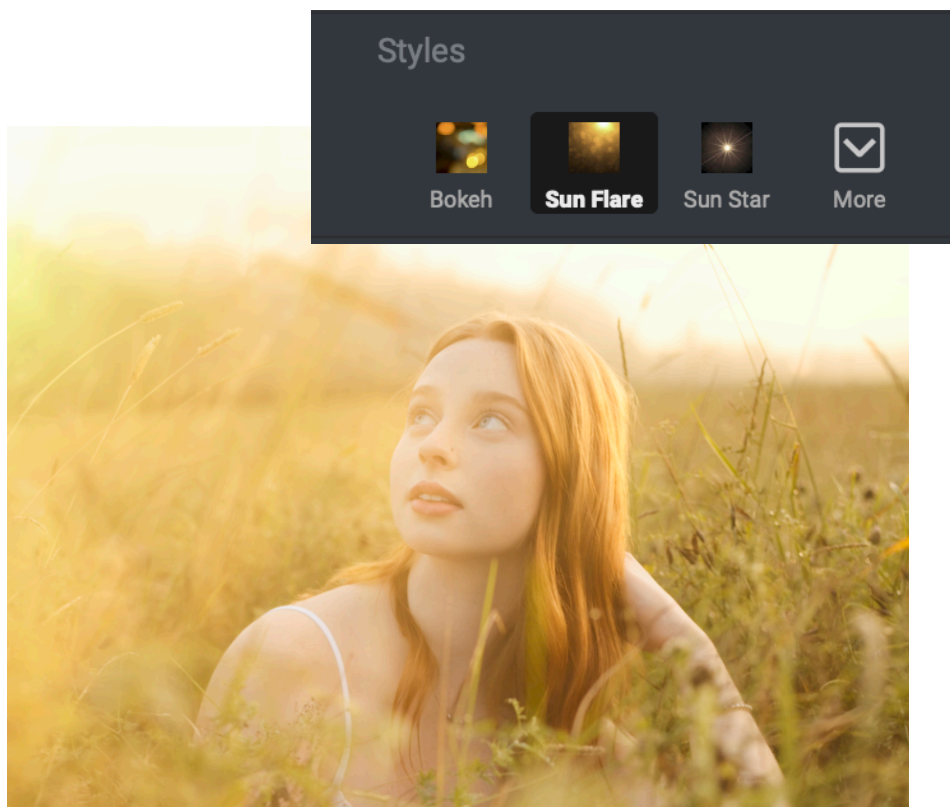
This will add a subtle, dreamy glow to the hair that works really well with the warm sunset light.



## 6. Add a Sun Flare to Match the Scene

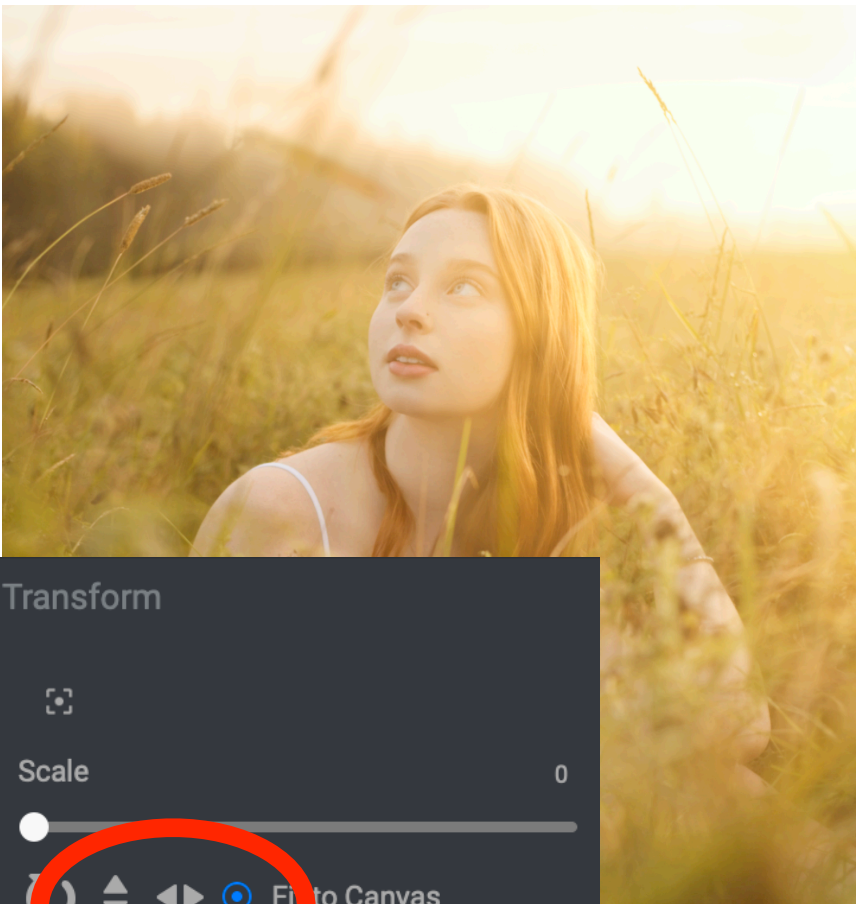
Let's make the background feel more alive and glowing by adding a Sun Flare.

- Go to the Effects tab.
- Click Add Filter, and choose Sun Flare.
- In the Styles section of the Sun Flare Filter, choose the Sun Flare style (the one in the middle).



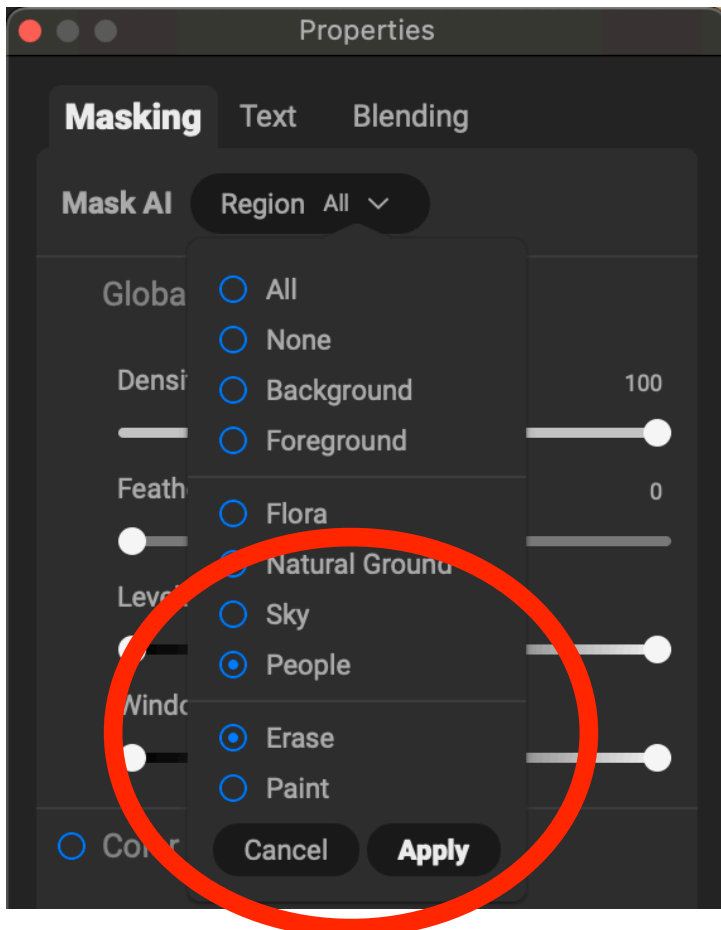
Now we'll flip the flare so it matches the direction of light in the scene:

- Scroll down to the Transform section in the Sun Flare filter.
- Click the Right Arrow below the Scale slider — this flips the flare to the other side.



Next, we'll remove the flare from our subject using masking:

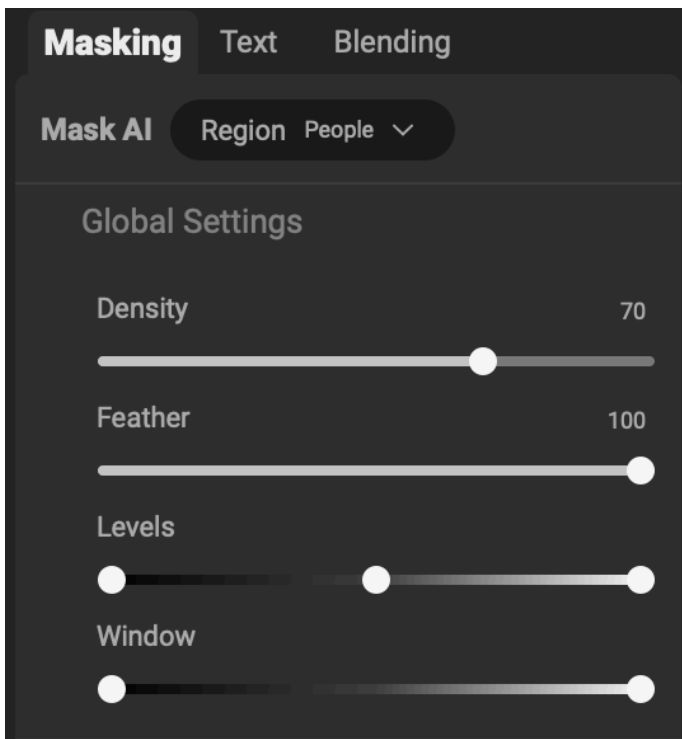
- In the Sun Flare filter, go to the Masking tab.
- In the Mask AI dropdown under Regions, choose People, set it to Erase, and click Apply.



Now the flare is removed from the subject — but we want to bring back just a little so it looks natural:

- Go into the Global Settings in the Masking Properties and lower the Density slider to 70.
- Pull up the Feather slider all the way to 100.

This softens the edges of the mask and makes the flare blend naturally with the subject.



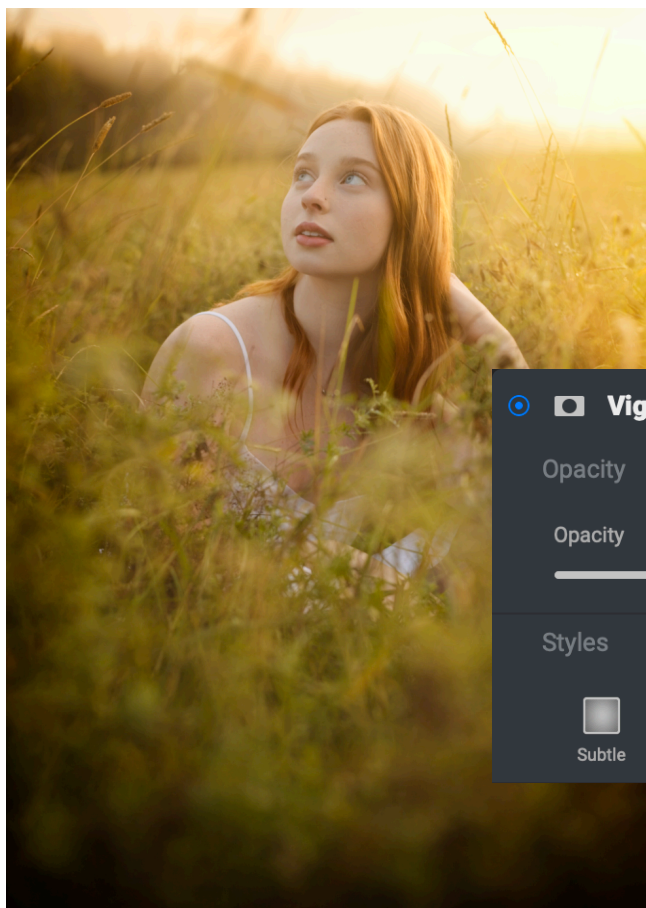




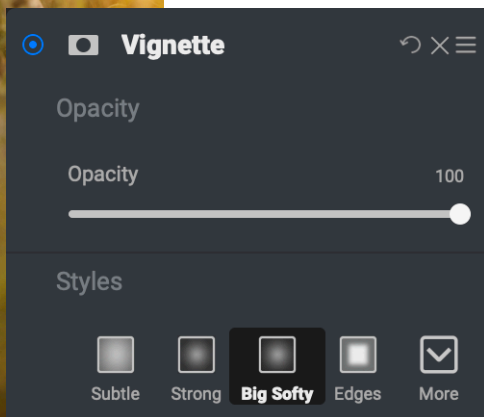
## 7. Add a Soft Vignette to Focus the Viewer's Attention

Let's finish things off with a subtle vignette to bring attention to your subject.

- Click Add Filter again, and choose Vignette.
- In the Styles section, select Big Softy.



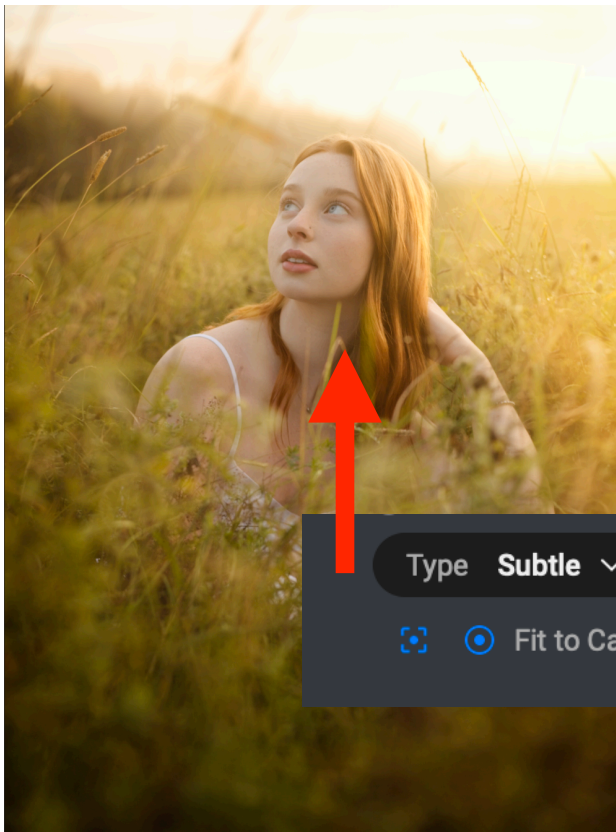
This is a perfect, subtle vignette that blends well with portraits.



Now position the vignette:

- In the Transform section of the Vignette filter, click the icon with a dot and four corners — this lets you position the center.
- Click and drag in your image to place the vignette center above your subject's head.

Lastly, lower the Opacity of the vignette to your liking.



I set mine to 60, which was a nice, soft touch.

Type **Subtle** ▾



Fit to Canvas

## **That's It! Your Sunset Portrait is Complete**

You've added light, warmth, glow, and focus to your sunset portrait. Don't forget — you can always go back and adjust settings to taste depending on your subject, background, and light direction.

