



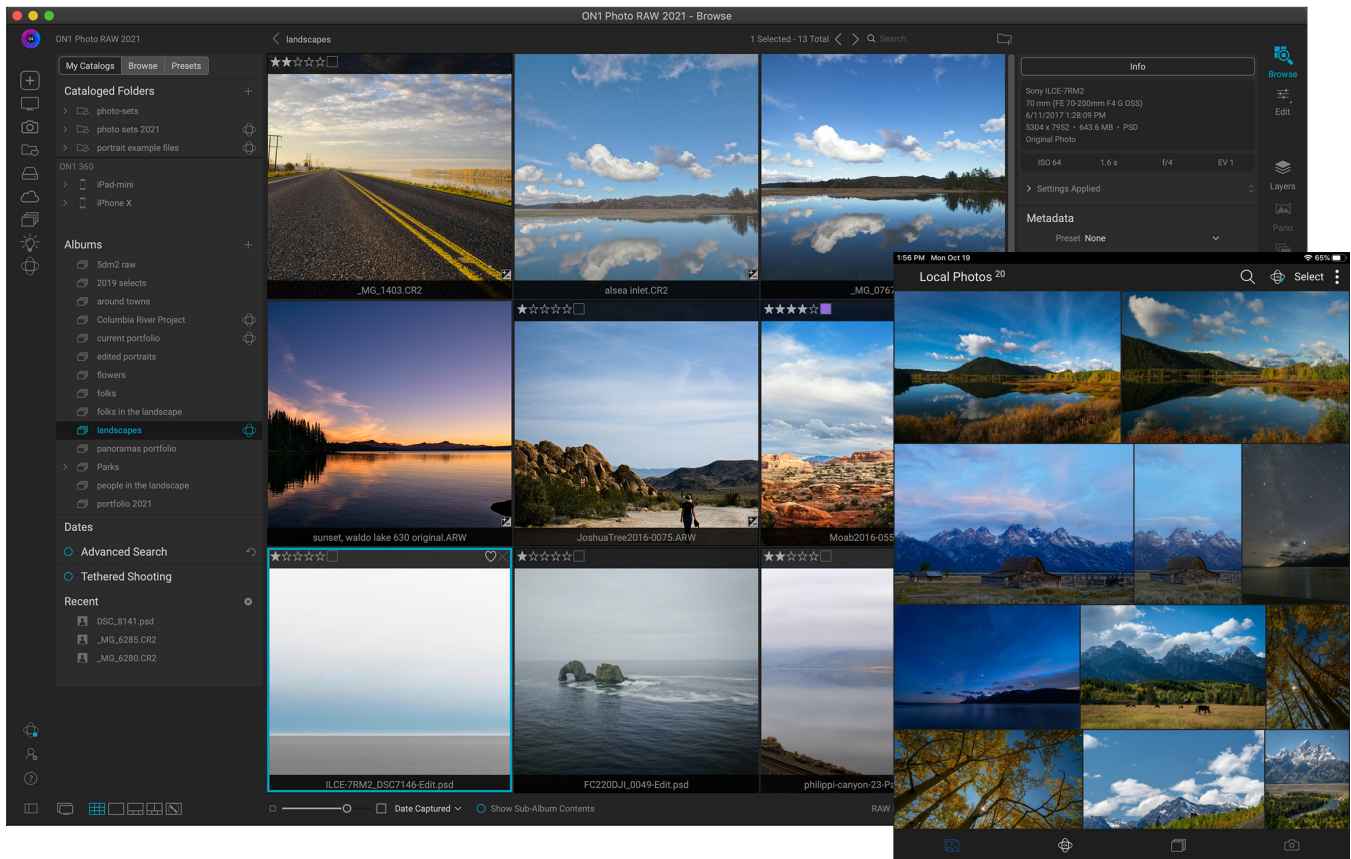
Getting Started

Connecting ON1 Photo RAW Across Your Computers & Devices with Cloud Sync

A short guide to get up and running.

Contents

What is the ON1 Photo RAW System?	1
System requirements	2
ON1 Photo RAW 2021.....	2
ON1 Photo RAW for Mobile.....	2
Supported file types.....	2
ON1 Photo RAW 2021.....	3
The Browse Module	4
My Catalogs and Browse Panels	4
Shortcuts.....	5
Cataloged Folders	6
Albums.....	6
Creating an Album	7
Managing Albums	7
Dates pane.....	7
Advanced Search pane	7
Editing Photos in Browse	9
Ratings, Labels and Likes	9
Applying Edit Module Presets in Browse.....	9
The Edit Module.....	10
Components of the Edit module	11
Copying and Pasting Edit module settings	11
The Tool Well	12
Working in the Develop Tab.....	13
Stylizing Photos with Effects.....	14
Adding filters.....	14
Filter pane details.....	14
Working with filter panes.....	15
Retouching with Portrait AI.....	15
Local Adjustments	16
Working with Local Adjustments.....	16
Presets.....	17
Working with Presets	17
Creating Your Own Presets.....	17
Layers.....	18
ON1 Cloud Sync	19
ON1 Sync File Formats.....	20
Checking ON1 Cloud Sync status	20
ON1 Photo RAW for Mobile.....	21
Viewing Photos in ON1 Photo Mobile	21
Photo Management and Editing with ON1 Photo Mobile.....	21
Mobile Editing Limitations with Synced Photos.....	22



WHAT IS THE ON1 PHOTO RAW SYSTEM?

The ON1 Photo RAW ecosystem is an end-to-end photography workflow solution for capturing, editing, and viewing photos seamlessly between multiple computers and mobile devices. The ecosystem consists of three components:

- **ON1 Photo RAW 2021**, a full-featured photo editor and organizer for Windows and Mac computers, available in both perpetual license and subscription options;
- **ON1 Photo RAW for Mobile**, a free camera app for iOS and Android smartphones and tablets that can capture raw photos; and
- **ON1 Cloud Sync** service, which is part of a Photo RAW 2021 subscription. It can store all of your photos online in a compressed format, making them available to all of your devices.

The beauty of the ON1 ecosystem is that you can edit your photos on any device – computer or mobile – and those edits are synchronized across all your devices, and all without having to store your originals in the cloud.

The minimum requirement to use all three components together is an active subscription for ON1 Photo RAW 2021, and a copy of ON1 Photo Mobile on your mobile devices. Because everything is tied to your ON1 user account (which you created when you signed up), once you've activated Photo RAW, it just starts working for you. As you add multiple computers, each one gets added to your ON1 hub.

System requirements

The only requirement for the Photo RAW ecosystem is a high-speed internet connection and active ON1 account, which you'll need for product activation, update checking, and syncing images to the ON1 cloud.

ON1 PHOTO RAW 2021

ON1 Photo RAW runs on Windows and Mac OS computers. The minimum system requirements are:

- Windows 7, Windows 8 or Windows 10 (64-bit only)
- MacOS 10.12 through 11
- Intel Core i5, Xeon or better processor
- 8 GB of RAM
- OpenGL 3.3 compatible video card with 512 MB VRAM

ON1 PHOTO RAW FOR MOBILE

- Apple iPhone or iPad with iOS 12.3 or higher
- Android phone or tablet with Android 7 (Nougat) or higher (current maintenance releases, 64-bit only)

SUPPORTED FILE TYPES

When working with photos, ON1 Photo RAW 2021 supports the opening and saving of the following file types, in RGB color mode, at either 8 or 16 bits per pixel.

- Raw files from most major camera manufacturers
- Digital Negative (DNG)
- Photoshop (PSD)
- Photoshop Large Document (PSB)
- Tagged Image File Format (TIFF)
- Joint Photographic Experts Group (JPEG)
- Portable Network Graphic (PNG)

Photo RAW can also work as a plug-in to the following apps, although, when used as a plug-in, you lose the benefits of ON1 Cloud Sync:

- Photoshop CS6, CC (all versions)
- Photoshop Elements 14, 15, and 2018
- Lightroom 6 and Lightroom Classic CC (all versions)
- Apple Photos (Mac only)
- Affinity Photo
- Corel PaintShop Pro (Windows only)

ON1 PHOTO RAW 2021

ON1 Photo RAW 2021 has three modules, Browse, Edit and Resize, which can be accessed from the Module Selector on the right side of the main window:

- **Browse** handles file-management operations and photo organization, and is your hub for ON1 Cloud Sync sharing and workflow.
- **Edit** performs non-destructive pixel editing — in a layered workflow, if you choose — with basic image adjustment tools, world-class effects, portrait retouching, and sophisticated masking and local adjustment tools.
- **Resize** is used to enlarge images, largely for printing to large-format printers.

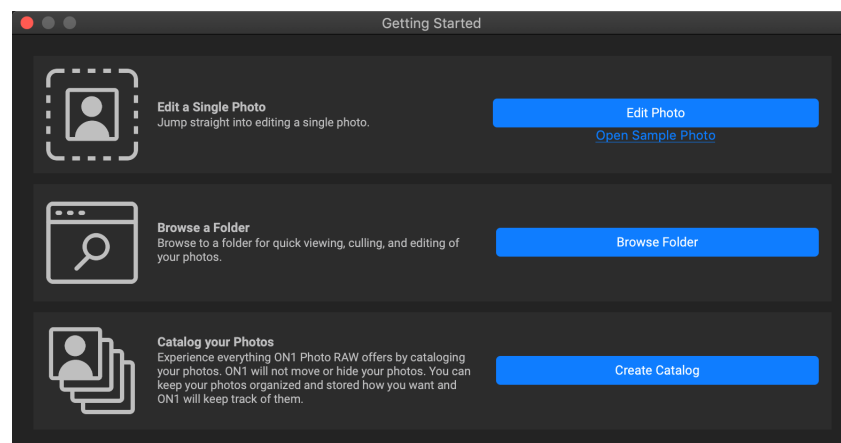
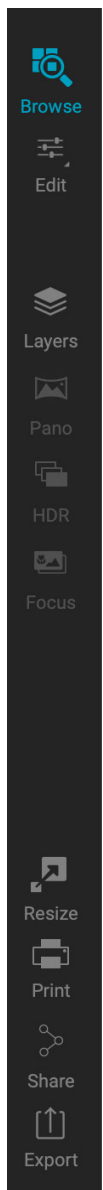
The Module Selector also contains a number of other functions, including icons for printing, sharing, and exporting your photos. There are also icons for building composites (using Layers), and for creating panoramas, HDR and focus-stacked images from multiple photos.

When you first launch Photo RAW, you'll sign into your ON1 user account, which you created when you bought the program. This will authorize your computer, and link you to your ON1 account; if you have purchased Photo RAW as a subscription, Cloud Sync will also be enabled.

If you were testing Photo RAW during the 30-day free trial period and purchased the app, you can click on the Sign-In button at the top right side of the window.

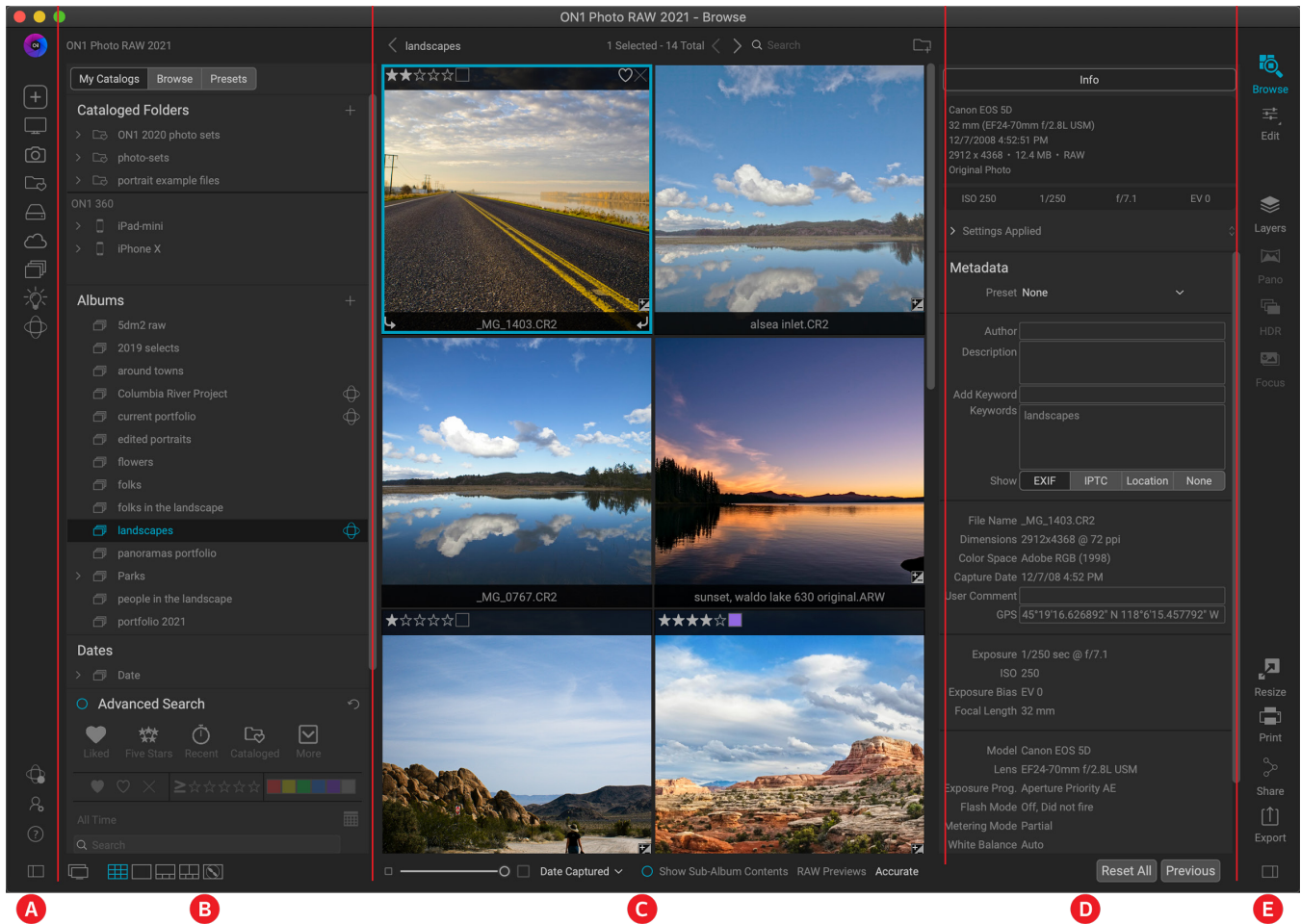
When you first run Photo RAW, you'll see the Getting Started window, which is designed to help you get up and running quickly. It has three options:

- **Edit a Single Photo:** opens a file-selection dialog, where you can navigate to a specific photo. Once you've chosen an image, Photo RAW will open that photo directly within the Edit module (starting with the Develop tab).
- **Browse a Folder:** opens the same file-selection dialog, where you can navigate to a specific folder, which will be displayed in the Preview area.
- **Catalog Your Photos:** lets you choose a folder to be cataloged by Photo RAW. This folder (and any subfolders) will be added to the My Catalogs pane.



Once you've gotten familiar with ON1 Photo RAW, you might not need to use the Getting Started window, but it is always accessible via the Shortcuts toolbar in Browse, which is discussed on [page 5](#).

The Browse Module



Browse is the default module when you use ON1 Photo RAW 2021 as a standalone app, and it is also your hub for ON1 Cloud Sync. The main Browse window is divided into five sections:

- A. The **Shortcuts** selector, and icons for displaying Cloud Sync status, Photo RAW Preferences and help.
- B. **My Catalogs, Browse and Presets** panels, for finding and managing your photos, creating albums and applying Edit module presets to your photos.
- C. The **Preview** area, which displays folders and photos.
- D. The **Photo Information** panel, which contains data about a selected photo, including metadata and keywords.
- E. The **Module Selector**.

You can close and open the left/right panels (B and D) by clicking on the icons at the bottom of the window.

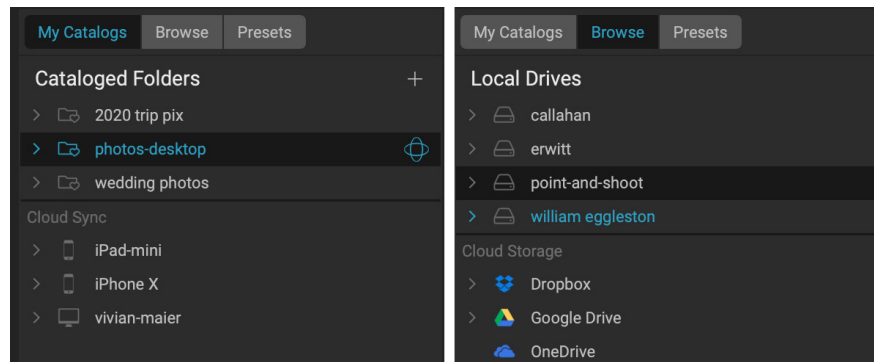
MY CATALOGS AND BROWSE PANELS

The My Catalogs and Browse panels let you manage, optimize and find your photos quickly and easily. You move between the panels by clicking on the label at the top. The My Catalogs panel contains a list of any

cataloged folders you have created, as well as a list of the ON1 Cloud Sync devices on your account. The top of the Browse panel includes a list of your local drives and local cloud storage services you might have on your computer (Dropbox, Google Drive, OneDrive).

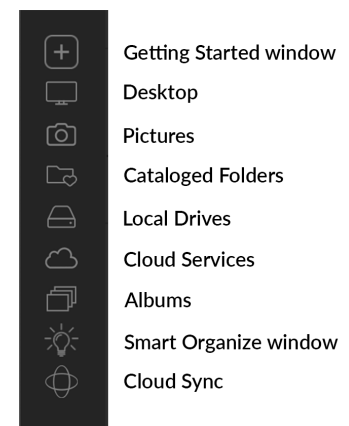
Clicking on an item in any of the panes will display that item's contents in the Preview area.

Clicking on the '>' to the left of the title will display any subfolders inside that content.



Shortcuts

The Shortcuts selector on the left side of the Browse panel is a list of icons designed to give you quick access to the Getting Started and Smart Organize windows, as well as six often used file locations, and display their contents in Browse's Preview window. From top to bottom, the icons represent the Getting Started window, your Desktop, your Pictures folder, cataloged folders, local drives, cloud sources, albums, the Smart Organize window, and ON1 Cloud Sync devices. Clicking on one of the icons will display the shortcut's contents in the Preview window.



PREVIEW AREA



The Preview window is the largest part of the Browse workspace. Here, you can view folders of images (including all synced images), in thumbnail or detail view, based on the folders, albums or filters you have chosen via the Browse panel. There are five main views in the Preview window:

- **Grid**, which displays a grid of thumbnails of your images. This view also displays folders, letting you go up and down a folder hierarchy quickly.
- **Detail**, which you get by double-clicking on a thumbnail. You can view this image in either 'fit to window' view, or can zoom in to see more detail.
- **Filmstrip** displays a strip of images from a folder or album at the bottom of the screen. The currently selected image displays in the preview area above the strip; use the arrow keys to move through the folder, or click on an image in the filmstrip to view it in the preview area.
- **Compare** view lets you compare a group of photos in separate panes inside the preview area. You can zoom in on one or all of the selection, and lock the panning so that, as you move around one photo, the others move with it. Using Compare, you can quickly find the best images in a sequence, whether it be for composition, sharpness, facial expressions or more.
- **Map** view can be used to display locations for photos that have GPS-based location data, or to search for locations that can then be applied to a photo or group of photos.

You can change the viewing mode between Grid, Filmstrip, Compare and Detail views by clicking on the view selector at the bottom of the window (left), or by using the keyboard shortcuts G, F, C, E, and M respectively.

CATALOGED FOLDERS

Photo RAW's cataloged folder feature is designed for your most important collections of photos. When you create a cataloged folder, it gets 'cached,' giving you fast access to all the photos in that folder, as well as some advanced search features. You also get the capability to publish that folder to Cloud Sync.

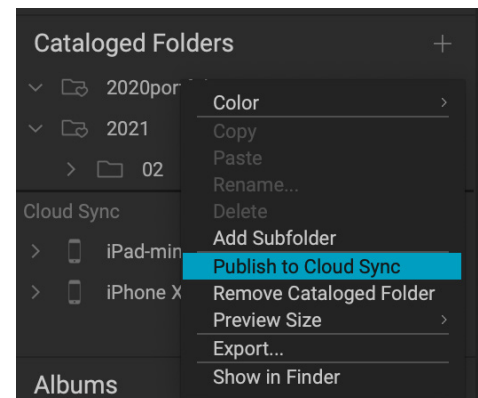
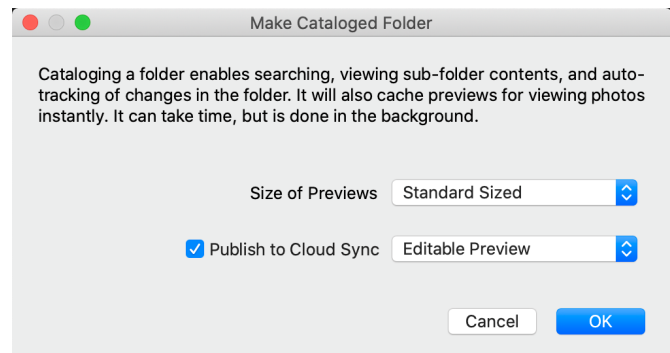
The quickest way to create a cataloged folder is to go to the My Catalogs pane and click the '+' button at the top of the Cataloged Folders panel. When you catalog a folder, you will be prompted to choose the size of the previews that are generated during the cataloging process, and whether you wish to publish the folder to the ON1 cloud.

For most situations, choose Standard as a preview size; it extracts the image metadata and creates a high-quality thumbnail and a fit-screen-sized preview. If you are cataloging a folder that is on a server, or if you have space constraints, choose either Medium or Minimal from the pop-up.

If you would like to publish the folder to the ON1 cloud, click the Publish to Cloud Sync box and choose either Editable Preview or Originals from the pop-up menu. The default is Editable Preview, which still lets you see and edit high-quality versions of your photos, but take up only a fraction of the size of the original.

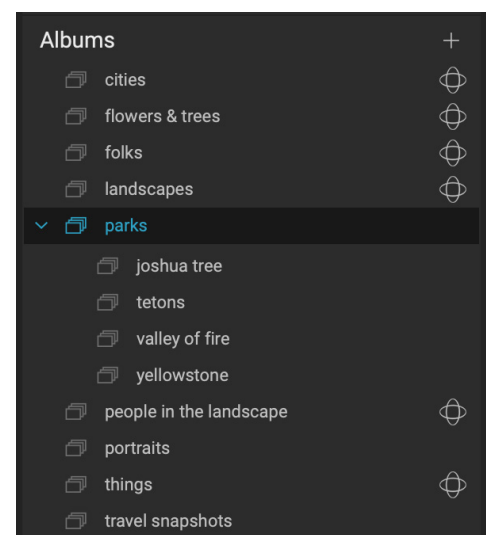
Cataloged folders that have been published to the ON1 cloud will display the Cloud Sync icon to the right of the folder name.

Once you've created a cataloged folder, you can change the preview size, and Cloud Sync publishing state by right-clicking on the folder in the Cataloged Folder panel and choosing the new option from the pop-up menu, as shown in the screenshot above.



ALBUMS

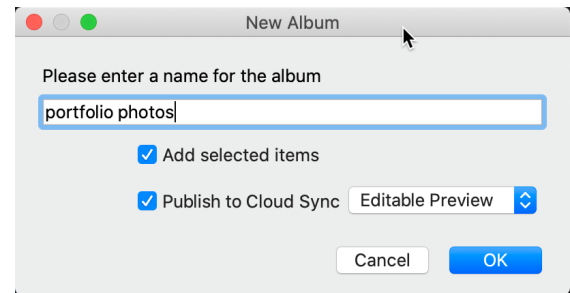
ON1 Photo RAW 2021's Albums feature lets you organize or keep track of photos in a project, event or even a broader category like a portfolio. Albums are created by selecting images manually and adding them to a new (or existing album) by dragging and dropping photos onto the pane. You can nest albums together to help manage your collections, and all albums – with the exception of nested ones – can be published to the ON1 cloud, and are indicated by the Cloud Sync icon to the right of the album name. (Any albums created on other ON1 devices will be displayed in the Albums pane on all of your connected computers.)



Creating an Album

Click the '+' icon in the pane and choose Create Album... from the pop-up menu. You can also create an album by selecting photos and dragging them onto the '+' icon in the Albums pane.

The New Album dialog box gives you options for adding an album name, and whether you wish to add the current selection of photos to the new album.



If you would like to publish the album to Cloud Sync, click the box and choose either Editable Preview or Originals from the pop-up menu.

Managing Albums

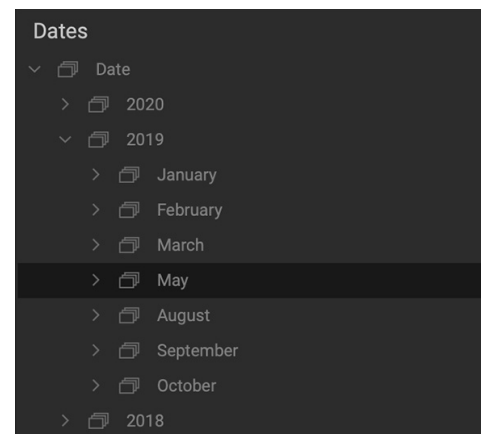
Photo RAW makes it easy to manage your albums and their contents:

- To add photos to an album, select them from Grid view and drag them onto an existing album.
- To remove photos, open the album, select the photo or photos you wish to remove, and choose Remove from Album from the Album menu.
- To remove an album, right-click on the album name and choose Delete.
- To rename an album, right-click on the album and choose Rename.
- To change the Cloud Sync publishing status for an album, right-click and choose Publish/Unpublish from Cloud Sync.

DATES PANE

Photo RAW's Dates pane offers a quick way to look for photos — in cataloged folders only — based on when they were taken. Using a simple timeline interface, you can drill down by year, month and day.

In this pane, you'll see a list of years, with the current year at the top (only years that have photos taken during them will be present in the list). Clicking on a year will show you all of the photos taken during that year. Clicking on the triangle to the left of the year will display a list of all the months that have photos in them, and you can keep drilling down to the day level. Drilling down to any level in the pane — year, month, day — will display all photos taken during that period.

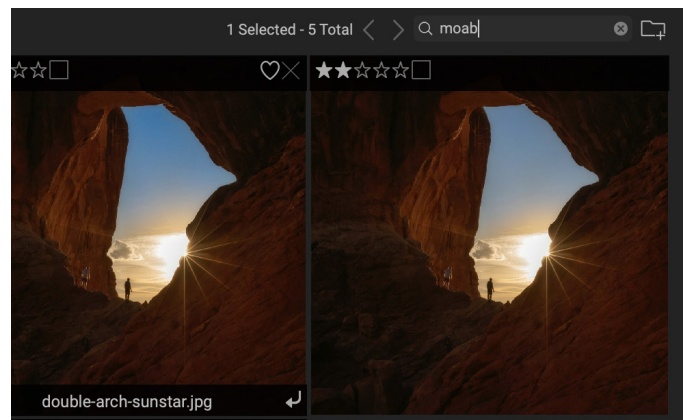


ADVANCED SEARCH PANE

The Advanced Search pane can help you find photos based on a variety of criteria specific to the metadata embedded in your photos. You can search based on any text associated with a photo, as well as likes, labels and star ratings, date, and keywords, and nearly any piece of metadata, from camera body and lens to aperture, ISO settings, time of day, and much more.

Advanced Search options are flexible: they can be applied to the current folder view or album, or they can search any or all of your cataloged folders. You can also save any search as a preset style, so you can use it again in the future. The pane has two modes: Basic and Advanced. In Simple mode, you can filter based on likes, star ratings, color labels, time, or basic text strings; all of the selections in this mode will match ALL of the chosen criteria to be found.

Advanced Search's Basic view lets you quickly search your current folder view, album or cataloged folders based on flags, ratings, labels, time and text. The best way to use this view is to enter text into the Search Bar at the top of the main Photo RAW window (shown at right), it will perform a basic search. For example, in the screen shot on the right, typing 'Moab' will display all photos in the current folder that have that text associated with them in any way. This can be the file name, associated keywords, or location metadata.

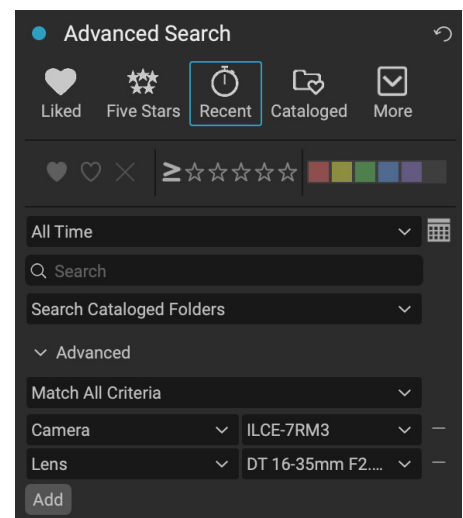


The Advanced option lets you find photos based on nearly every possible metadata type or textual information associated with a photo, and you can set the filter to match all or any of the chosen criteria.

To perform a search, either type some text in the search box at the top of the Browse window, or click the button to the left of the Advanced Search label and set your criteria. If you want to filter based upon your cataloged folders, adjust the pop-up option underneath the pane's text box. (To turn the pane off, click the Advanced Search button again.)

At the top of the Advanced Search pane is a set of common styles: Liked (any photo with the Like flag set), Five Stars, Recent (last 30 days), and Cataloged. Clicking on any one of these will run that specific search. Clicking on the More icon at the far right of the pane will give you a list of preset and user-defined styles, where you can choose additional filtering criteria, save the current search as a new style, or update it, if you are modifying an existing style.

The Advanced section at the bottom of the pane lets you add more discrete search options, choose multiple conditions to search upon, and set those options to filter on any or all of the criteria selected. Create an advanced filter by clicking on the Advanced triangle and choose either Match All Criteria or Match Any Criteria from the pop-up menu directly under the Advanced tab.



To choose additional filtering options, click on the Add button at the bottom of the Filter pane, and choose another criterion from the pop-up.

If you want to keep If you find yourself using the same search operation over and over, you can save it as a style. Just create the filter and choose Save New Style from the More pop-up menu at the top of the pane and give the style a descriptive name. It will now appear at the bottom of the More menu.

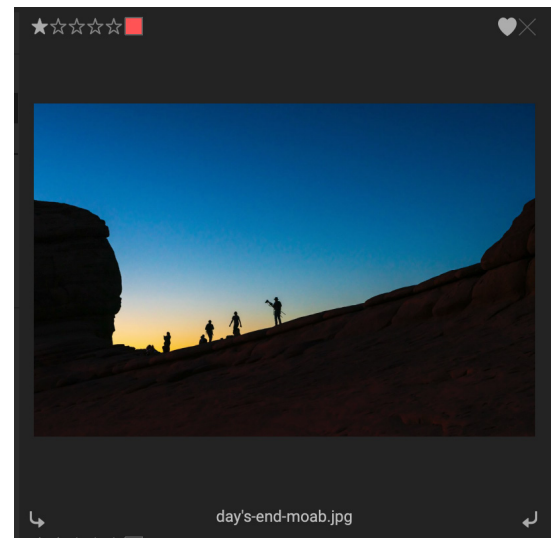
EDITING PHOTOS IN BROWSE

While most of ON1 Photo RAW 2021's image-editing power is found within the Edit module, you can perform many editing tasks on photos inside Browse. This includes changing metadata, labels and ratings, but you can also apply presets to an image or group of images, and can even copy Develop/Effects settings from one photo and paste them onto other photos directly within Browse. These operations are also available to any photos shared via the ON1 cloud.

Ratings, Labels and Likes

Browse offers three ways to mark and group similar images, stars, color labels and likes. All of these methods may be set several ways: via the keyboard as you're previewing photos, right-clicking on a photo, or clicking the badges on the image thumbnail.

- **Star ratings.** Ratings are available from zero to five stars; use this system in whatever way works best for you. Rating using the 1 through 5 keys on the keyboard. You can also clear the stars on any image with the ` (backquote or grave) key.
- **Color labels.** Color labels are a great way to mark subsets of images for special handling. You set the color ratings by pressing the following keys: 6 (red), 7 (yellow), 8 (blue), 9 (green), 0 (purple).
- **Likes.** Likes are useful for classification purposes, to select photos for rejection or saving as a favorite. There are three options: Like (filled-in heart), Dislike ('X' icon) and Not Set (empty heart). By default, images are in the Not Set category. You can set your Liked images with the P keyboard shortcut, Dislikes with the X key, and clear settings with the U key.



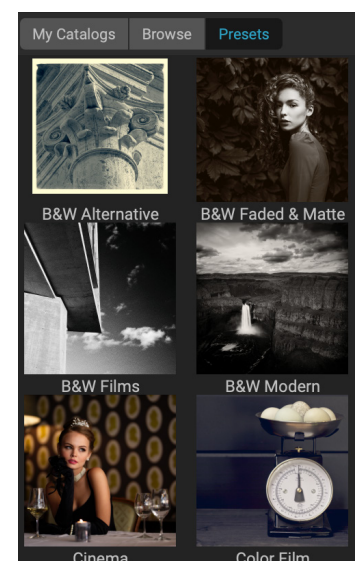
Applying Edit Module Presets in Browse

ON1 Photo RAW 2021 has a preset system that lets you save your complete settings from the Edit module. These presets are always available in Browse, via the Presets panel. They let you can apply your favorite presets quickly and easily to a photo or a group of photos.

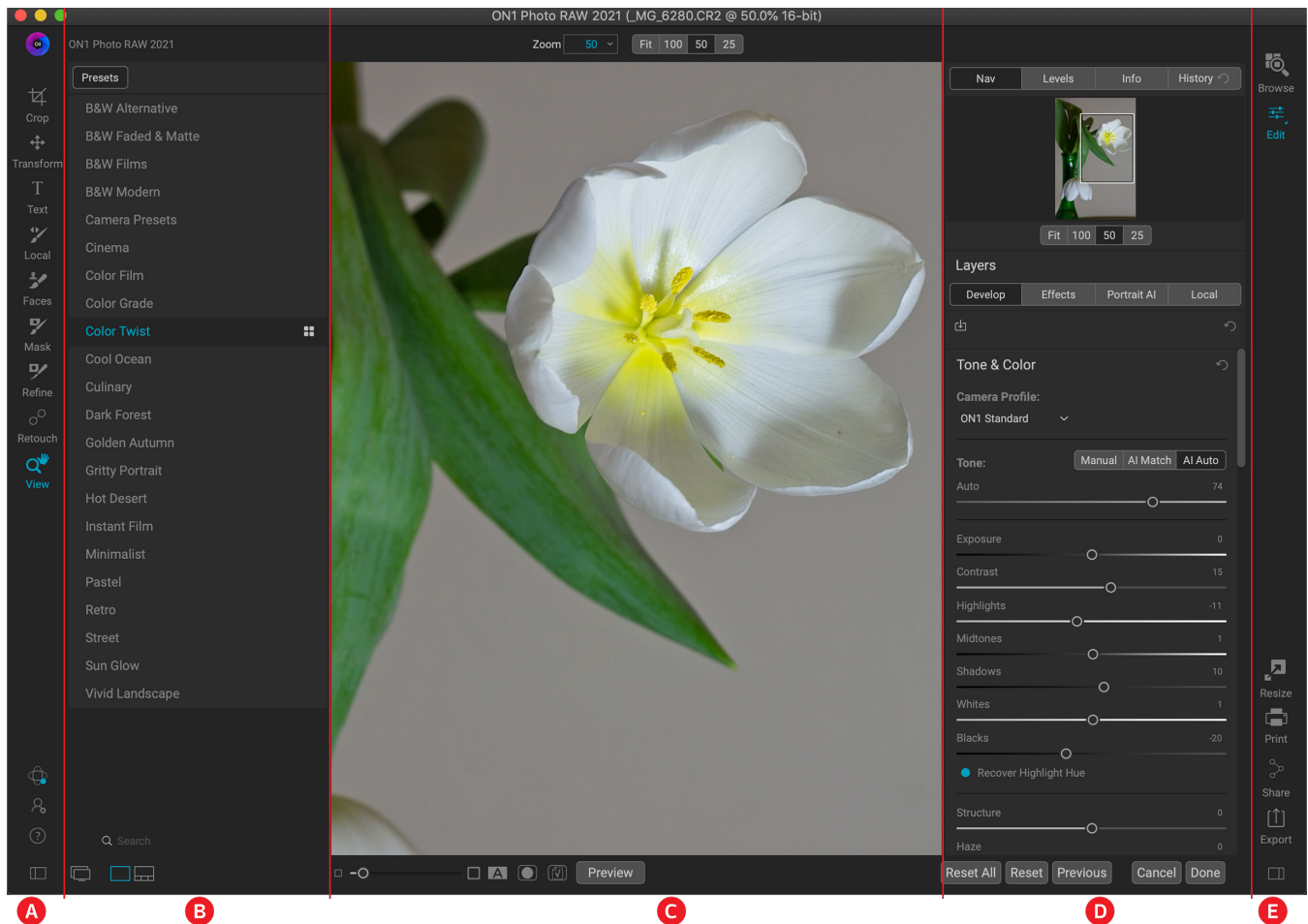
To apply a preset to an image, click on the Presets panel. There you will see ON1's built-in presets (you can also install your own). The panel is divided into categories, and clicking on a category name will open it and display that category's presets, each with a tiny thumbnail showing your selected image with that preset applied to it.

To apply a preset to a photo, simply click on the preset. Presets applied in Browse are not cumulative; after you've applied one preset, clicking on another preset will remove the previous one and apply the new one.

Because Photo RAW is non-destructive, going to any of the Edit module tabs will display all of the settings applied by the preset. Once in Edit, you can adjust the settings, switch to a different preset, or make any other editing changes.



The Edit Module



The look of the Edit module in ON1 Photo RAW 2021 is similar to that of Browse, with slight variations that are specific to photo-editing tasks. The Edit module's workspace is divided into five sections:

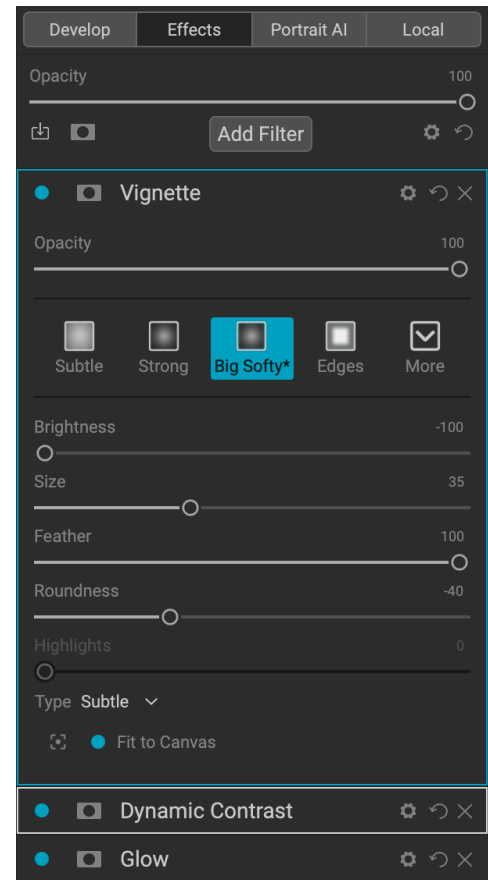
- A. The **Edit Toolbar**, which contains tools specific to photo editing, and has icons for displaying ON1 Cloud Sync status, Photo RAW Preferences and help.
- B. **Presets** panel, for applying Edit module presets to your photos. When you're working in the Effects tab, the Filters panel will also be present. The bottom of the window has icons that let you switch between Detail view and Filmstrip view.
- C. The **Preview** area, which displays the photo currently being edited. The zoom buttons at the top let you view the photo at four settings, from Fit to Window view down to 25%. At the bottom of the window are settings for adjusting the view size, displaying before/after previews, and turning soft-proofing on and off.
- D. The top of the right panel contains the **Photo Information** pane, and includes a histogram, metadata information, and a history of any edit adjustments during the current session. Underneath are the **Layers** pane and the four editing tabs, for **Develop**, **Effects**, **Portrait**, and **Local Adjustments**.
- E. The **Module Selector**.

You can close and open the left/right panels (B and D) by clicking on the icons at the bottom of the window.

COMPONENTS OF THE EDIT MODULE

The Edit module consists of four distinct editing functions, separated into tabs:

- **Develop**, where you perform basic, global editing operations — adjusting tone and color, removing noise, sharpening and more. It is the perfect place to begin editing your photos.
- **Effects** (shown on the right, with three filter panes) is the stylization center of Photo RAW, with 31 filters — black and white conversion, dynamic contrast, HDR stylizing, glows, sharpening, vignettes and more — that can be stacked in any order, with extensive blending and masking options.
- **Portrait AI** is for retouching faces. It automatically finds each face in a photo, analyses it individually, and applies just the right amount of retouching, based on your preferences.
- **Local Adjustments** apply basic, targeted edits to parts of your photos, letting you perform traditional photo-editing tasks — like dodging and burning — with ease.



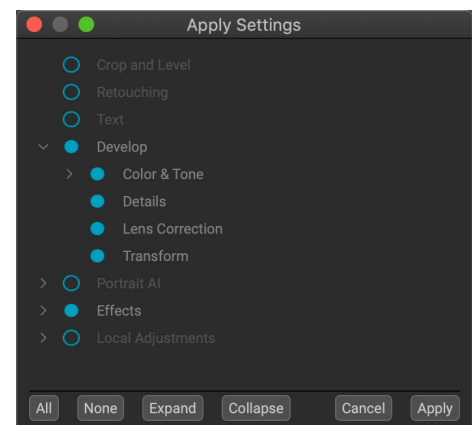
Switching between the different tabs in the Edit module is as simple as clicking on the appropriate tab. While you work on an image, all of your settings in each tab are saved while you edit.

When used as a standalone app, all edits you make to an image are preserved non-destructively, and you can go back to any image at any time and make changes or corrections to it.

If you are using Cloud Sync, all of your synced photos are editable in ON1 Photo RAW, regardless of the device they reside upon, or their Cloud Sync storage format (editable preview or original). All of your edits will be synced back with the photos on their originating device, and will be fully re-editable in Photo RAW. The primary exception to this is when you are using Layers, which necessitates the creation of a new file, and which must be stored on the device that created the layered file (see “[Layers](#)” on page 18 for more).

Copying and Pasting Edit module settings

In addition to creating and using presets, you can copy and paste the Edit module settings from one file to another, or alternatively, synchronize the edits on one photo to a group of photos. These operations can all be performed in any of the editing modules, as well as in Browse, adding to ON1 Photo RAW 2021's extreme flexibility. To do this, select a photo that has the edits you wish to copy, and choose Copy Settings from the Settings menu. Then, go to the photo you wish to apply those edits to and choose Paste Settings from the Settings menu. The Apply Settings window (shown right) will show let you specify which operations you wish to have copied. Click on the control circles to omit specific adjustments, then click Apply.

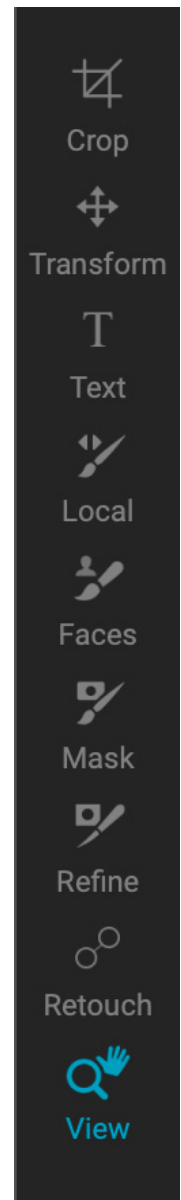


The Settings menu is also the place where you can reset any (or all) of a photo's edits. You can do this on a tab-by-tab basis (all Develop adjustments, for example), as well as reset any cropping, text additions and retouching operations.

THE TOOL WELL

The Edit module has 17 tools available for you when you are working on a photo, and are accessible via the Tool well on the left side of the screen. Some tools—Transform, Crop, Text, Faces, and View—are self-contained. Others are nested within a tool group—Local, Mask, Refine, and Retouch—and are accessible via the Tool Options bar at the top of the screen when you click on one of those tool icons:

- **Crop Tool:** Trims an image to your desired size or ratio. *Shortcut key: C*
- **Transform (Move) Tool:** Moves and changes the size and rotation of your layer. *Shortcut key: V*
- **Text Tool:** Adds text blocks to your document. *Shortcut key: T*
- **Adjustment Brush (Local group):** Paints in or out local adjustments. *Shortcut key: K*
- **Adjustable Gradient (Local group):** Applies a selective gradient in local adjustment mode. *Shortcut key: Shift+K*
- **Faces (Portrait) Tool:** Finds faces in the current image, and opens the Portrait tab, where you can paint skin in or out to fine-tune each face's mask. *Shortcut key: Shift-I*
- **Masking Brush (Mask group):** Mask large similar areas quickly. (Includes Perfect Brush option.) *Shortcut key: B*
- **Masking Bug (Mask group):** Applies a selective gradient as a mask in any filter (or to the entire stack). *Shortcut key: M*
- **AI Quick Mask Tool (Mask group):** Create high-quality masks with only a few strokes as guidance. *Shortcut key: W*
- **Refine Brush (Refine group):** Lets you refine an existing mask's edges, to help mask difficult areas, such as hair. *Shortcut key: N*
- **Chisel Tool (Refine group):** Removes fringes from the edge of a mask. *Shortcut key: Shift-H*
- **Blur Tool (Refine group):** Blurs the edges of a masked area to help it blend more naturally. *Shortcut key: L*
- **Perfect Eraser (Retouch group):** Removes distractions like signs and power lines. *Shortcut key: Shift-Q*
- **Retouch Brush (Retouch group):** Removes blemishes like dust spots and acne. (Includes Perfect Brush option.) *Shortcut key: R*
- **Clone Stamp (Retouch group):** Paints over an area from a sample of another area. *Shortcut key: Shift-S*
- **Healing Brush (Retouch group):** Paint over a distraction and a matching area of your photo is magically blended on top to replace it. *Shortcut key: Q*
- **View Tool:** Adjusts the magnification of the image in the Preview area, and lets you move around the Preview window. *Shortcut key: Z*



To access a tool, click on the tool or use the shortcut key. When selected, the cursor will change, and you will see a set of options for the tool in the Tool Options bar. If the selected tool is part of a tool group, you will see the other tools in that group, on the left side of the Tool Options bar at the top of the screen.

Detailed descriptions of all of the tools, with their respective options, can be found in the ON1 Photo RAW 2021 User Guidebook, which can be found in the help area of the ON1 website: on1help.zendesk.com.

WORKING IN THE DEVELOP TAB

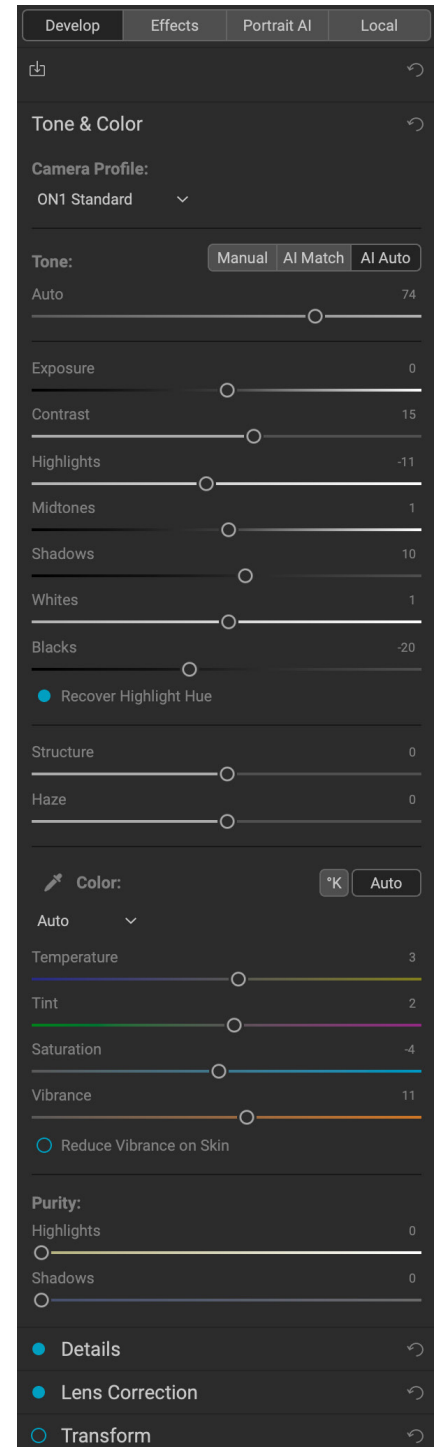
Develop is the tab for performing basic editing operations — adjusting tone and color, removing noise, sharpening and applying transforms to a photo. It is the perfect place to begin editing your photos. Note that all adjustments made in the Develop tab are global, meaning that they apply to all of the pixels in your photos. None of Photo RAW's masking tools or operations are available in the Develop tab.

The Develop tab has four adjustment panes:

1. **Tone & Color:** The Tone section of the pane is where you adjust base-level tones like exposure, contrast, highlights, shadows, midtones. The Color section lets you adjust overall color balance, saturation, and vibrance; it also lets you reduce saturation in the highlight and shadow tones.
2. **Details:** Adjusts global sharpening and noise reduction.
3. **Lens Correction:** This detects the lens used in a photo (from its metadata), and searches an internal lens database for an appropriate profile. If found, the profile will be applied automatically, reducing distortion, chromatic aberration and peripheral fall-off. You can also make manual lens correction changes in this pane.
4. **Transform:** This pane is used to apply distortion and perspective correction to your image, and includes rotation and scaling options as well.

The AI Match button at the top of the Tone panel uses artificial intelligence technology to automatically adjust the panel's controls to closely match your photo as it was on the back of your camera's display. The AI Auto button performs an automatic tone adjustment on your photo using a proprietary ON1 algorithm. With both of these buttons, you can use the Auto slider underneath to reduce the overall amount applied by that operation.

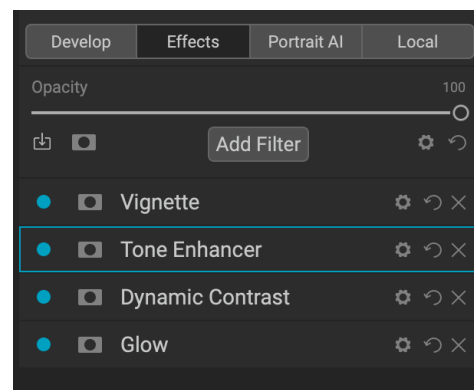
The Details, Lens Correction and Transform panes have a small circular control to the left of the label. Clicking the control will turn that adjustment off (empty circle) or on (full circle). This is like a show/hide preview for that adjustment, and it can be helpful when you wish to look at the adjustment's effect on your photo. If you wish to reset a pane's settings, click on the Reset icon, which is represented by the 'O' icon at the top right side of the panel.



STYLIZING PHOTOS WITH EFFECTS

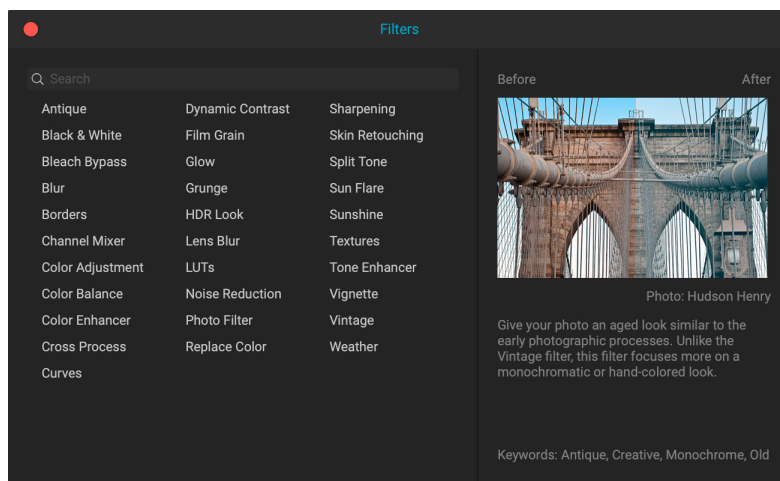
While Develop is aimed at helping you make basic tone and color adjustments to your photos, Effects is where you add stylization to your photos, and, as such, it is much more flexible and powerful than Develop. Within Effects, you have extensive control over how adjustments — filters — are applied. The editing stack inside Develop is fixed, but the stack in Effects is flexible. Here are some of the things you can do with an image in Effects:

- You can add filters in any order (even multiple instances of the same filter).
- Move filters up and down in the stack, just by clicking and dragging them up and down.
- Add blending options to all or some of the filters and set the opacity of each filter individually.
- Create complex masks for each filter you add, letting you selectively apply a filter to specific portions of an image.



Adding filters

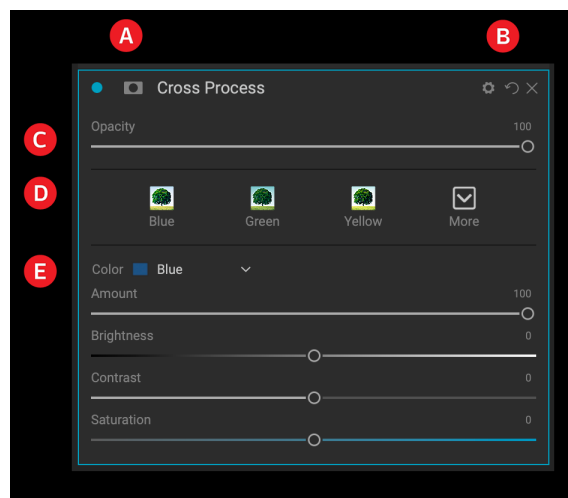
Clicking the Add Filter button at the top of the Effects tab will open a window containing a list of all 31 filters. If you run your cursor over a filter name, the right side of the window will have a small before/after thumbnail, a short description, and a list of keywords that relate to that filter. To add a filter, click once on the filter name, and it will add it to the stack, above the current filter. If there aren't any filters in the stack, the new filter will be at the top of the stack.



Filter pane details

Each filter has a different set of adjustment options and controls, but every filter pane has the same five sections:

- Filter on/off button (left); Show/Hide Mask (right)
- Displays blending mode options (left); Resets filter (middle); Deletes filter from the stack (right).
- Filter opacity setting.
- Styles pane for filter presets.
- Control area for adjusting that filter's specific settings (dependent upon the filter chosen).



Working with filter panes

By default, the filter stack is empty, although, if you have applied a preset that uses filters from Effects, you will see those filters in the stack. Clicking on the button in the top left corner of the filter pane will turn that effect on or off, which can be helpful if you want to see the effect in the context of other edits you have made. If you don't like the effect, click on the 'X' icon in the pane's title bar to get rid of it. The Reset button, which is next to the Delete button, represented by '↺', will reset that pane's settings to their default.

To move a filter up or down in the stack, click on the pane's title bar and drag it up or down. A heavy white line will appear between panes as you drag; let go of the mouse at the location you wish the filter to go.

Each pane can be collapsed, by clicking in the pane's title bar (a Hide/Show link is visible when you move your cursor over the title bar, but the entire title bar is clickable). If you don't want to have to scroll up and down the filter stack when you have a lot of open panes, go to the Window menu and choose Solo Mode. This will leave the current pane open, and will hide all the other panes. Clicking on another pane will open that one and collapse the previous one.

RETOUCHING WITH PORTRAIT AI

Portrait AI was designed to help you retouch faces quickly and naturally, and with as little user intervention as possible. When you open a photo in the Portrait tab, Photo RAW automatically finds each face in your photo, analyses it individually, and adds just the right amount of retouching, based on your preferences.

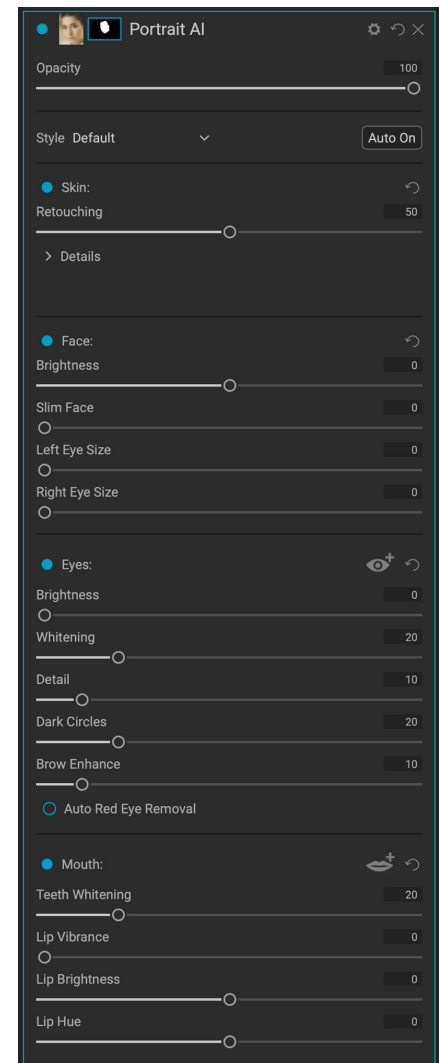
Despite all the automation, you have full control over all aspects of retouching and finishing. Each face in your photo has independent settings and adjustments (right). You can manually adjust eye and mouth positions in each face, paint to refine the skin mask and use brushes to remove blemishes.

Portrait AI's skin retouching uses frequency-separation techniques, which help to maintain natural skin texture while reducing color and tonal changes across the skin. It creates flawless, natural-looking skin.

In addition to skin smoothing and blemish removal, you can use Portrait AI to correct common errors in lens choice and lighting by adding fill-light to brighten the face or resculpt the face to thin the jawline. You can even adjust the eye size on each individual face.

The whites of eyes can be brightened and the iris can be sharpened, and there are automatic red eye removal options as well. You can easily brighten the smile and adjust the color and saturation of the lips.

Portrait AI is easy to use: Faces tool in the Tool Well can be used to paint skin in or out—and the Portrait pane that contains settings for adjusting the skin, eyes and mouth in a face. Each face in your photo has its own pane, so you can adjust each face on an individual basis.



LOCAL ADJUSTMENTS

Local adjustments, found in the Local tab, let you selectively apply tone, color and detail adjustments to a portion of a photo, to, for example, darken a sky, bring up the shadows in a corner for emphasis, or apply traditional darkroom-style dodge and burn techniques.

These adjustments are, in essence, a mask that is applied to a portion of your image. Adjustments are made using either the Adjustment Brush or the Adjustable Gradient, and you can create as many local adjustments as you need on an image (by clicking on the Add Layer button at the top of the Local Adjustments section).

Operations you can perform with local adjustments include tone (exposure, contrast, highlights and shadows, detail), color (white balance, saturation and vibrance) and detail (structure and noise). Each local adjustment layer have their own settings and work on different parts of your image. You can also use local adjustments to paint with color over part of a photo, to perform specialized tasks such as skin retouching, or to replace the color of an object.

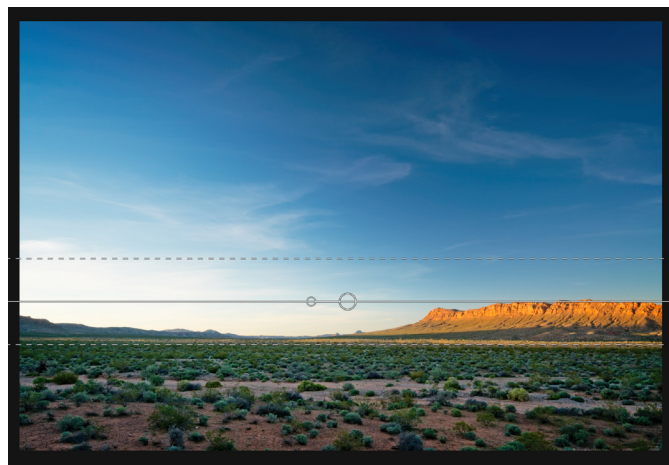
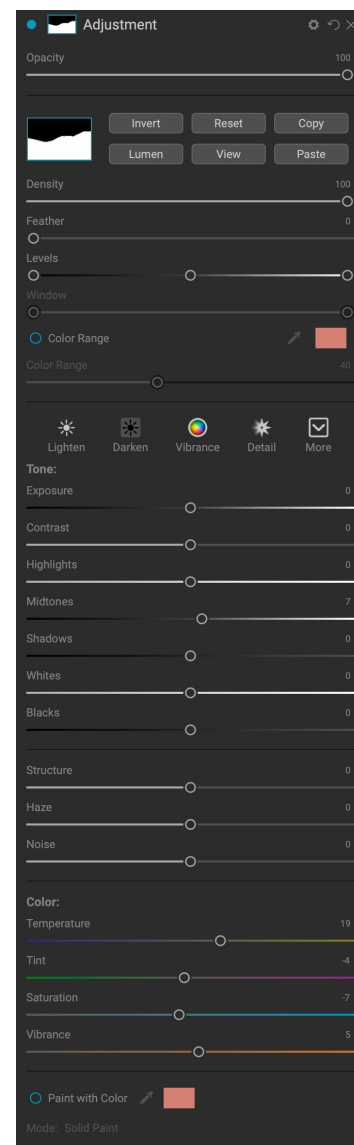
Working with Local Adjustments

The main section of the Local tab has all of the same options found in the Tone & Color pane in the Develop tab: Exposure, Contrast, Highlights, Shadows, Detail, and Color Temperature, Tint, Saturation and Vibrance. In addition to those settings, the local adjustment pane includes a Noise slider, designed to help reduce noise on a targeted level (most often seen in the shadows).

When adding a local adjustment layer, click on the tool you wish to use in the Options bar at the top-center portion of the Photo RAW window. The Adjustment Brush is perfect for working with specific subjects or areas in an image: an object that you wish to brighten, or shadow areas that you wish to darken. You set the brush to paint the effect in or out of the photo, and specify brush size, feather and opacity, and brush in the areas you wish to paint an effect in or out.

The Adjustable Gradient is designed to apply a gradient mask over part of an image: to darken a sky, for example (as shown in the screenshot on the right). To apply a standard gradient to a local adjustment, click on the tool, then click in the image roughly where you wish the effect to be. You'll see the outline of the gradient, which is called a bug. You can use the handles on the bug to move your gradient, increase or decrease the length of the gradient, or rotate it.

For more about using the Adjustable Gradient and the Adjustment Brush, or any of the masking



tools in Photo RAW, please check the *ON1 Photo RAW 2021 User Guidebook*, found in the Resources section of the ON1 support website, at on1help.zendesk.com.

PRESETS

Presets are stored ‘recipes’ of editing adjustments that can be applied to a single photo or 100 of them, giving them a consistent look or style. ON1 Photo RAW 2021 comes with more than 200 built-in presets, but you can also create your own. Presets can utilize Develop adjustments, Effects settings, Portrait operations and local adjustments, in any combination. They can incorporate cropping information and even retouching operations. And, most importantly, any adjustment made with a preset can still be edited, which lets you fine-tune.

Working with Presets

To apply a preset to an image, click on the Presets panel. There you will see any built-in presets supplied by ON1 — ordered by category — as well as any presets you might have created or installed yourself. Clicking on a category name will open it and display any presets within that category, with a tiny thumbnail showing your selected image with that preset applied to it. To change the size of the thumbnails in the Presets panel, select the Browser Mode option from the View menu and choose One, Two or Three Column View. (You can also choose a list view, if you find that easier to work with.)

If you’d like to see a larger representation of what your selected photo will look like with a category’s presets, click on the Quick View Browser icon in the category’s title bar (shown in the screenshot on the left). That will display an overlay window with all of the presets in that category.

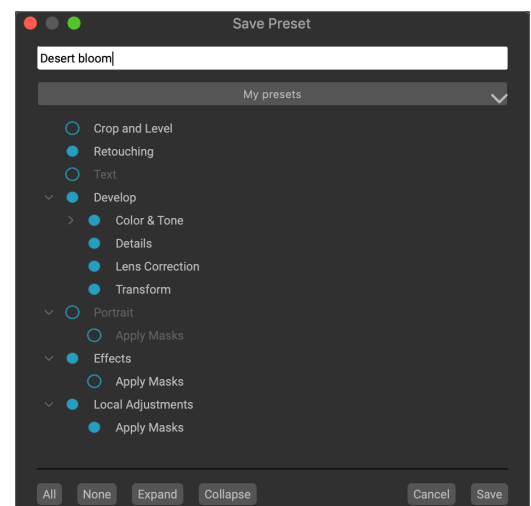
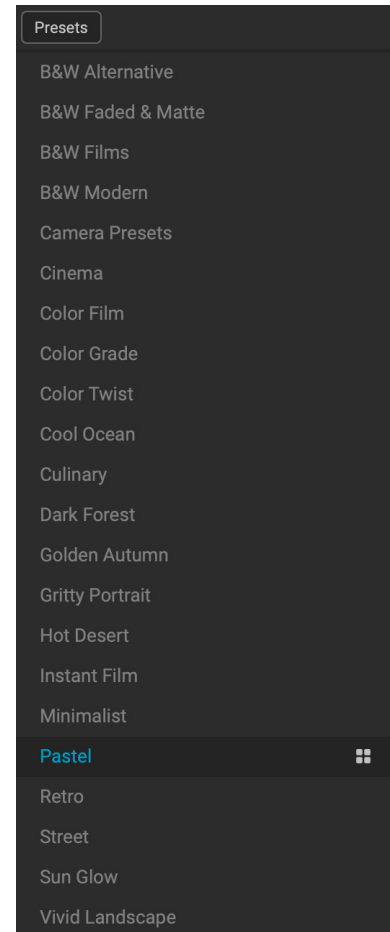
To apply a preset to a photo, click on the preset in the mini-browser or in the Quick View Browser. Presets are not cumulative; clicking on another preset will remove the previous one and apply the new one.

After you have applied a preset, you can still make changes to any of the settings — in Develop, Effects, and Local Adjustments — add or remove adjustments, switch to another preset, perform any retouching or more.

If you don’t like a preset, clicking on another one will replace the settings of the previous preset with the settings of the new preset. To remove a preset entirely, choose one of the reset options from the Settings menu, or remove the settings from the appropriate panes in Develop and Effects.

Creating Your Own Presets

Once you have a group of edited settings that you wish to save, go to the Settings menu and select Save Preset. The



Save Preset dialog will appear, with options for which module's settings you wish to save, naming the preset, and adding it to an existing or new category. Nearly all of the Edit module settings can be saved as a preset, including cropping, retouching, text blocks and masks.

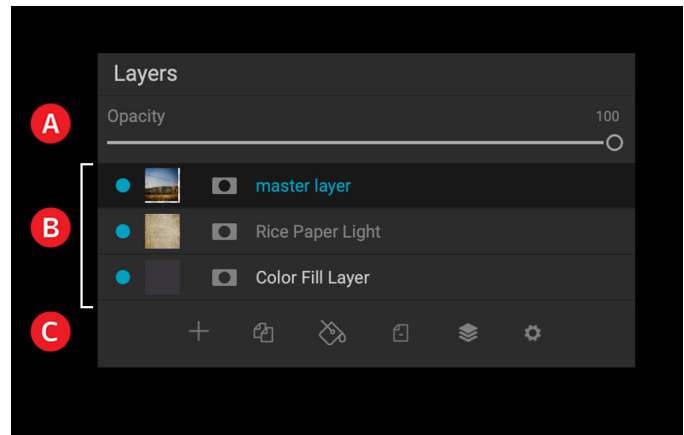
LAYERS

The Layers functionality inside the Edit module lets you create quick composites, blend multiple images together, paint in new skies or backgrounds, align layers based on their content, and much more. And, because Layers is tightly integrated within the Edit module, all of your work remains re-editable at all times: you can go back and add, change or update any setting made inside the Edit module, on any layer.

You can combine multiple photos or copies of the same photo as layers. Each layer can be moved, sized and masked on its own. But more than that, each layer has its own non-destructive settings — just like any photo in Photo RAW, all the way back to the original raw data. That means you can use all of Photo RAW's editing features — basic exposure changes, camera profiles, portrait retouching, Effects filters and more — as part of a layered photo.

The Layers pane has three sections:

- A. **Layer Opacity:** Reflects the opacity of the currently selected layer.
- B. **Layers:** All of the layers in your document are listed here, with a thumbnail of the layer contents and the layer mask (if there is one); the currently selected layer has an colored outline around it (based on the Accent Color chosen in the System Preferences' General tab). You can rename a layer by double-clicking on the title.
- C. **Layer Tools:** The toolbar at the bottom of the Layers pane includes buttons for (from left to right) adding a layer, duplicating the current layer, deleting the current layer, merging layers, and setting a layer's blending options.



When you add a layer to a photo, Photo RAW automatically creates a new document with an .onphoto extension, leaving your original photo intact. Layers can be as simple as copies of the current photo, to apply more complex adjustments to portions of an image than you could with local adjustments. You can also add other documents as a layer inside the current document, for replacing skies or other backgrounds, for adding textures, or for when you wish to create complex collages.

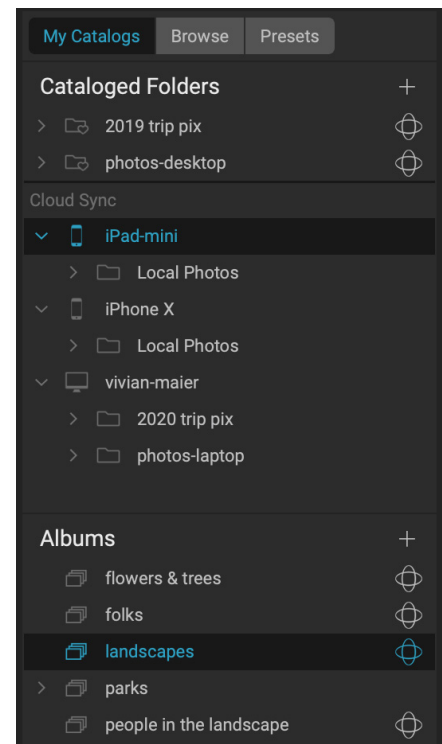
Once you have added a layer, the entire Edit module is available for that layer. When you click on a layer, you can add any adjustment from Develop, Effects, Portrait or Local. You can use the Transform tool to move, rotate, and scale the contents of a layer independently from the complete document.

ON1 CLOUD SYNC

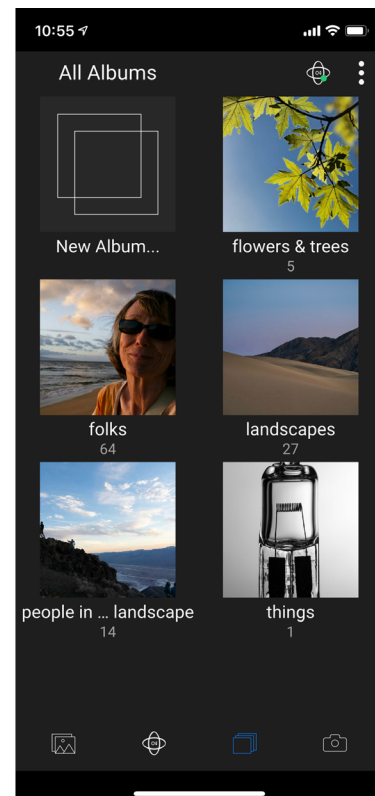
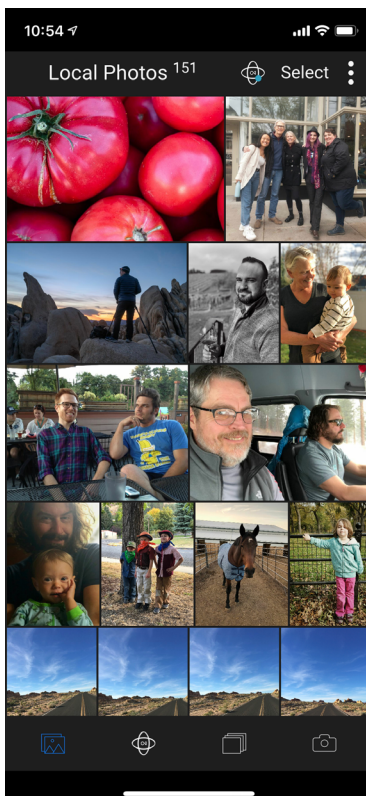
Photos are stored and accessed in ON1 Cloud Sync in a number of different ways. With ON1 Photo RAW 2021, you create cataloged folders (important folders of photos) and albums (collections of photos) and publish them to ON1 Cloud Sync. Published items from Photo RAW will have a Cloud Sync icon to the right of the folder or album name.

Mobile devices have a folder called Local Photos, which stores photos taken with the ON1 Photo Mobile camera, as well as photos you have imported to that device. You can also create albums inside ON1 Photo Mobile, which get shared to the ON1 cloud.

Every device you have connected to your ON1 Cloud Sync account shows up on all of your other devices; you can view the contents of every device on another, and access the contents of all of your published folders and albums. In Photo RAW, the Cloud Sync panel, found in the My Catalogs pane (right), will show your other shared devices; there you can click to view the photos that have been published to ON1 Cloud Sync, and edit them on that computer. You can also add some of those photos to an existing album, or create a new one with them.



On phones and tablets, there are four icons at the bottom of the screen (below): the one on the left shows your Local Photos, the second from the left displays your other ON1 Cloud Sync devices, the third displays your published albums, and the leftmost icon is for accessing the camera.



ON1 Sync File Formats

With ON1 Photo RAW 2021, you have the option of publishing photos to the ON1 cloud in one of two formats, the **original** photo, or an **editable preview**, which uses a proprietary compressed-raw file format developed by ON1. This editable preview can be up to 75% smaller than the original raw file, while preserving the original's tone and color fidelity. Using this option lets you keep more of your photos in the cloud, and, with either format, you can still edit a photo on one device, and your edits will be synced back to the originating computer, so that your original file is updated with those edits (and any other metadata changes you might have made). You can change the format of synced photos from editable previews to originals and vice versa, but this can only be done on a folder or album basis, not for individual photos. (See [page 6](#) for specifics on working with the two sync formats in Photo RAW.)

ON1 Photo Mobile always publishes photos to the ON1 cloud as originals.

Checking ON1 Cloud Sync status

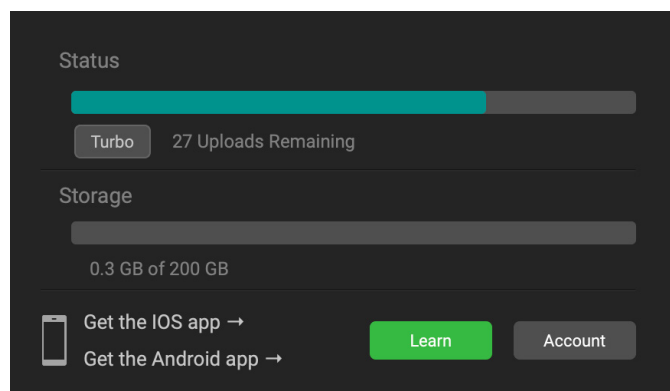
Once you have an ON1 user account and a Photo RAW subscription plan, each device you authenticate will show up on your other devices. With Photo RAW and ON1 Photo Mobile, you'll see a small ON1 Cloud Sync status icon with a colored dot in it. The color indicates the status of ON1 Cloud Sync in reference to the current device. In Photo RAW, the icon will be in the side panel on the lower left; in ON1 Photo Mobile, it will be in the bar at the top of the screen.



The indicator will be one of four colors:

- If there are no uploads or downloads in process, and the connection to the ON1 cloud is on, the dot will be **green**.
- When Photo RAW is in the process of uploading or downloading images or other information from the cloud, the dot will be **blue**.
- If there is a problem with the internet connection, you aren't logged in, or if you are running low on available space, the dot will be **red**.
- It will be **gray** if you do not have an ON1 Cloud Sync account.

Clicking the status icon will bring up your ON1 Cloud Sync dashboard (shown on the right). This window shows the status of any current uploads, your available cloud storage, and includes links to the iOS and Android versions of the ON1 Photo Mobile app. Clicking on the Account button will take you to your account page on the ON1 website. The Learn button displays a window with information on how to get started with ON1 Cloud Sync.



The Cloud Sync dashboard in Photo RAW also has a button marked Turbo. This mode can be used to speed uploads; it will take as much of Photo RAW's processing power as it can to sync photos, to the limit of your upload bandwidth.

ON1 PHOTO RAW FOR MOBILE

The ON1 Photo Mobile app acts as a photo editor, a camera — with full raw-capture support — and an import device. You can shoot photos with your phone, edit them using ON1 Photo Mobile, add them to existing albums, and they will automatically be shared to the ON1 cloud for viewing and editing on any other ON1 system device.

ON1 Photo Mobile has four tabs, found at the bottom of the screen:

- **Local Photos**, which displays the photos on that device, whether they were captured with the camera, or imported into the app;
- **Cloud Sync**, which displays your synced devices, and lets you view the photos on those devices;
- **Albums**, which displays synced albums, and lets you create your own synced albums directly from your mobile device; and
- **Camera**, a full-featured, pro-level camera capable of capturing raw images and syncing them immediately to the ON1 cloud.

ON1 Photo Mobile uses the same raw-processing engine found in Photo RAW, and features nondestructive editing capabilities. The editing controls are similar to those found in the Develop tab of Photo RAW's Edit module: there are adjustments for Exposure, Contrast, Shadows, Midtones, Highlights, Whites, Blacks, White Balance, Noise, and Sharpening. The app also includes numerous filters from the Edit module's Effects tab: including Color Adjustment, Black & White, Film Grain, HDR Look, Glow Split Tone and Vignette.



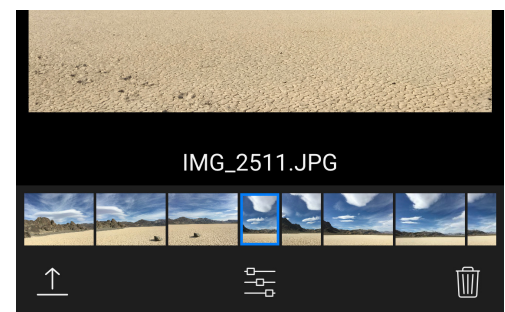
Viewing Photos in ON1 Photo Mobile

You can view all of your photos — those local to your device, or those synced from the cloud — in ON1 Photo Mobile via standard gestures and taps. Tapping on an album, for example will display a grid of that album, and you can pinch two fingers together and apart to change the grid size. Tap on a photo to view it in Detail view, and pinch to zoom in and out.

Photo Management and Editing with ON1 Photo Mobile

When you wish to share or edit a photo with ON1 Photo Mobile, tap on it from any Grid view screen. This will display the photo in Detail view with the photo's name, and three icons at the bottom of the screen: one for sharing the photo, one for editing, and one to delete the current photo (this only applies to photos that reside in that device's Local Photos folder).

Sharing options include saving a copy of the photo to your camera roll, or to be shared via your device's social media sharing options. The sharing window includes sizing options (medium, large, and full-size) for your exported photo.



Editing photos with the app is similar to editing photos in ON1 Photo RAW 2021, although ON1 Photo Mobile doesn't have all of the tools and filters found in the desktop app. ON1 is committed over time to bring the mobile app as close to parity with the desktop version as possible.

Tapping the Edit icon at the bottom center of the screen will display eight editing functions underneath the photo:

- **Crop:** resizes and levels your photo.
- **Tone:** for adjusting exposure, contrast, highlights, shadows, midtones, white and black points, and for adding structure or applying dehaze.
- **Color:** lets you adjust the color balance of the photo.
- **AI Auto:** performs an automatic tone adjustment on your photo using a proprietary ON1 algorithm.
- **Details:** for applying sharpening and noise reduction.
- **Presets:** ON1 Photo Mobile includes a variety of presets in multiple categories, letting you achieve a great look with one click.
- **Effects:** lets you apply nine of Photo RAW's Effects filters: Black & White, Color Adjustment, Curves, Dynamic Contrast, Film Grain, HDR Look, Glow, Split Tone, and Vignette.
- **Local Adjustments:** In the same way that Photo RAW lets you apply targeted adjustments to portions of a photo, ON1 Photo Mobile has a Local Adjustments module, where you can fine tune portions of your photos, with the same masking tools found in the desktop app.
- **Reset:** The rightmost icon will reset all of your edits, returning your photo to its original state.



Mobile Editing Limitations with Synced Photos

There are two instances where you might run into an situation where you can view, but not edit a synced file inside ON1 Photo Mobile:

- When you've edited a synced photo with Photo RAW using any Effects filter that is not present in ON1 Photo Mobile.
- Any .onphoto file cannot be edited in ON1 Photo Mobile. This includes HDR, panorama and focus-stacked composites, as well as layered files.



ON1 Getting Started Guide

©2016-2021 ON1 Inc.

Revision 1.2, February 2021 (ON1 Photo RAW 2021.1 release, Cloud Sync changes)

© 2006-2021 ON1 Inc. This document and the software described in it are copyrighted with all rights reserved. ON1, onOne and the onOne logo are trademarks of ON1, Inc. Apple, Macintosh and MacOS are trademarks of Apple, Inc. Microsoft, Windows are trademarks of Microsoft, Inc. Adobe, Photoshop, Lightroom Classic and Photoshop Elements are trademarks of Adobe, Inc. Kodak is registered trademarks of Eastman Kodak, Inc. Fuji and Fujifilm are registered trademarks of Fujifilm, Inc. Ilford is registered trademarks of Harman Technologies, Inc. ON1 is not associated with these companies. All other trademarks are the property of their respective owners. The activation system used by ON1 Inc. is licensed under Patent No. 5,490,216. For a full list of license disclosures view the LICENSE.TXT file installed with the software.